

Western A Model News.



THE OFFICIAL NEWSLETTER OF
THE MODEL 'A' RESTORERS CLUB (WESTERN AUSTRALIA) BRANCH INC.

JULY 1989

- Next Run Sunday 23rd of July
- Assemble West Coast Automatics 21 Wellington St Morley
(Max's business address)
9.30 am
- The Run A pleasant scenic drive with stop over for morning tea,
AS it could be wet, arrangements have been made for
lunch and meeting to be held in a hall. There
are tables and chairs and an electric stove. You will
need a full tank. The run is on come hail or shine.

COMING EVENTS

BREWERY RUN

Jim and Nina have organized for the model A members and their friends to have a guided tour of the new complex at Baile Rd Canning Vale. This outing is scheduled for Monday 30th of October with the group meeting in the brewery car park at 6.20 (this time will be confirmed) We must have 80 people to have the tour - it can be up to 120. Final figures will be needed at the September meeting. If you are interested and wont be coming to the Sept meeting please give Jim a ring [REDACTED]

A.G.M.

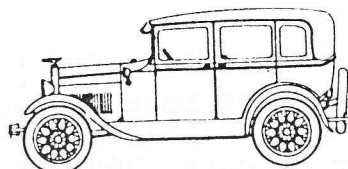
This will be held on the 27th of August at the Embleton Primary School.

September Run

Ningham Station (between Wubin and Payne's Find). Bookings have been made but if you require further information ring Jim or Nina Williams [REDACTED].

For Loan John Mclean has a professional video of the many A models at Wangarrata. If members would like to borrow this for viewing please contact John.

Set this evening aside for our XMAS DINNER December 8th



APOLOGIES

A & J Smith, B & D Bennie, J & F Luca.

MINUTES

Minutes read and accepted as read by S. Read. Seconded by L. Cooke.

GENERAL BUSINESS

- J. Williams booked brewery tour for Monday 30th October at \$3 per person.
- R. Andrews read letter from Combined Car Clubs regarding inspection sticker.
- Inspection date for vehicles to be decided and advised at the next meeting.
- S. Read moved that concessionally licenced cars, inspected by other clubs, present certificates to Model A Club for verification. Seconded by L. Cooke.
- R. Andrews advised that A.G.M. is in August - all positions become vacant and urged members to consider taking a position.
- A. Jeffree offered to use the Embleton Primary School for the A.G.M.
- A welcome was extended to Angelo and Judy Calleja, our new members.
- Bevan Sharp asked members to stand and observe one minute's silence in memory of the late Mr Eric Richards.

VISITORS

Robert Davies, Sue and Pat, Gaye and James and Amanda and Darren.

COMING EVENTS

July 21st - Quiz Night.

July 23rd - Run to be organised by Max and Dora Annear.

August 27th - A.G.M.

MEETING CLOSED AT 2.10.

MADDINGTON METRO FUND RAISING DISPLAY

The display was held from the Thursday until Saturday and featured six cars of various body styles. The response from the public was extremely good even if the donation box did not reflect this.

We would like to thank the members who provided their cars, and also everyone who gave up their time to keep an eye on the cars and answer questions.

NEW MEMBERS

Members please update your roster.

Robert Davies [REDACTED] South Perth

Angelo and Judy Calleja [REDACTED]

Alexander Heights [REDACTED]

Margaret and Eldred Saw [REDACTED]

Rockingham [REDACTED] (unrestored 1928 phaeton)

A warm welcome is extended to these new members.

Annual Inspection

When Saturday 19th of August (the 20th is available but Reg and Max would prefer to just use the Saturday)
Where Max's Workshop "West Coast Automatics"
21 Wellington St Morley

RE: QUIZ NIGHT

Have enclosed a map showing where the East Fremantle Lacrosse Club Rooms are. Could you please put this in the next newsletter as it may be of assistance to some people.

The Club Rooms are next to Arthur Marshall Tennis Courts on Preston Point Road, East Fremantle. They are actually situated off the road, alongside the playing fields.

Everyone should be at the Club Rooms at 7.30 p.m. for an 8.00 p.m. start on Friday, 21 July 1989. Beer, wine, limited spirits and soft drinks will be on sale at the bar. Bring your own nibbles. People who have not bought tickets but reserved a table can purchase their tickets at the door. \$5.00 per head, with six people per table.

My telephone number is [REDACTED] to reserve a table. Tables are selling fast so be quick if you don't want to miss out on this fun night.

Sallie Madgett

FORD MODEL A RESTORERS CLUB

QUIZ NIGHT

FRIDAY, 21 JULY 1989

**EAST FREMANTLE LACROSSE CLUB ROOM
PRESTON POINT ROAD, EAST FREMANTLE**

7.30 p.m. for 8.00 p.m. start

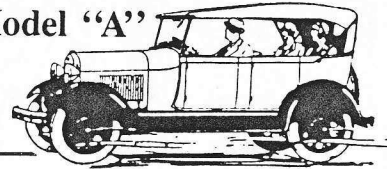
**Tables of Six
Great Prizes to be Won**

**\$5.00 entry - keep this
ticket for your door
prize.**

**CONTACT SALLIE MADGETT OR BRUCE JEWELL
ON [REDACTED] FOR TICKETS.**

The Magic of the Model "A"

*By Betty Fidler,
Wichita, Kansas*



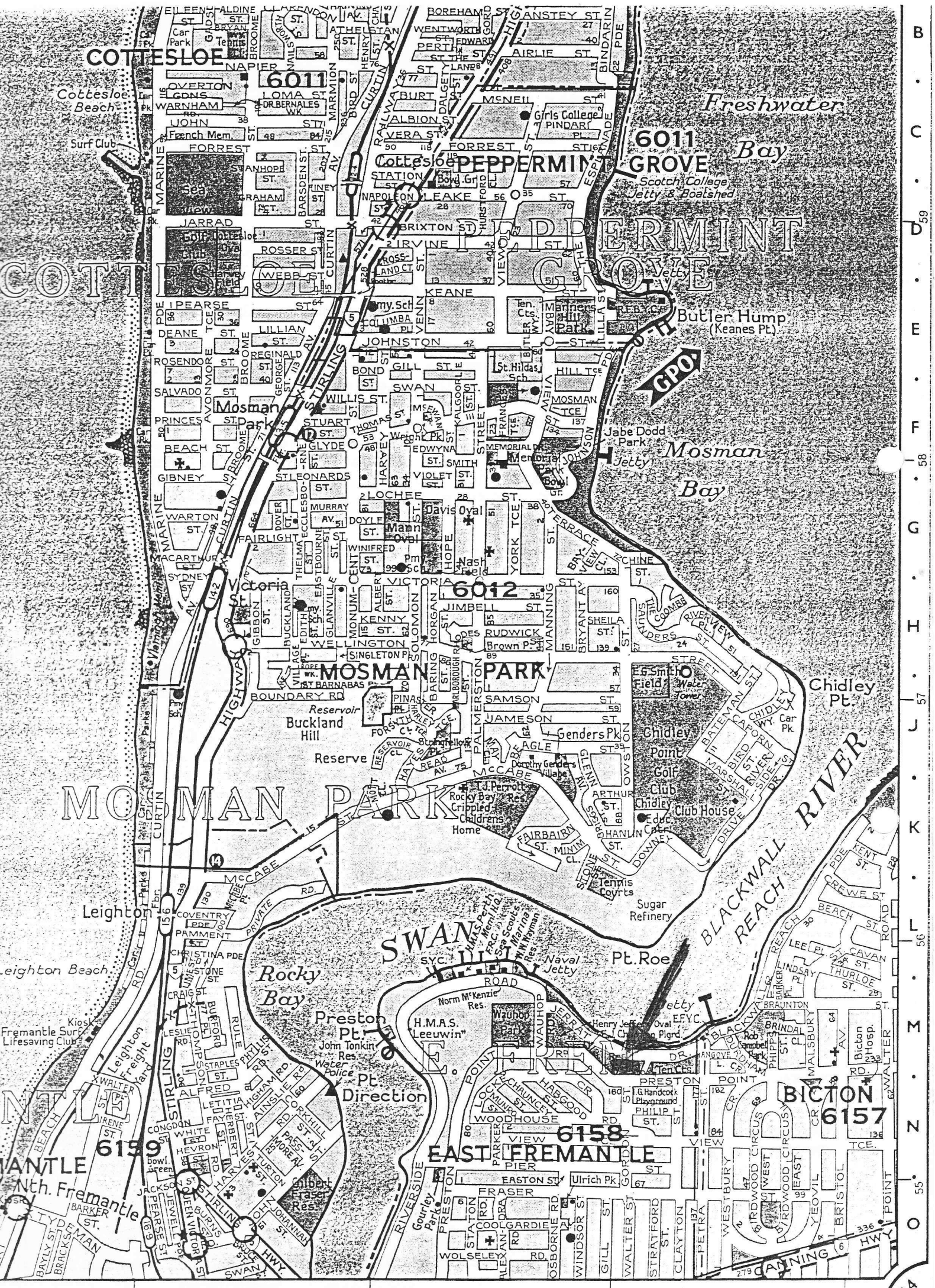
*What is so magic about an old car
That runs for awhile, but not too far?
The carburetor floods and the rear end drips;
The lights come on but lose their zip.
It backfires and jerks, misses and putts,
If it runs at all, it runs too rough.
And since we all know it can't stop on a dime,
We just have to take a little more time.*

*So, what is so special about the old "A?"
Well, as a traveler, I'd just like to say,
That touring is great and the people are, too;
And there's lots of adventure just waiting for you.
"How far can we go before we break down?"
"Do you think we're gonna make it to the next town?"
I'm sure you'll agree with me when I say,
This is the magic of the Model "A."*

*But the magic is also in this truth,
The car slows me down and here's the proof:
As we ride along, I seem to find
I enjoy every minute one at a time.
And this is the magic of the Model "A,"
To enjoy each minute of everyday.
Now tell me before I come to the end,
When do you think we can all go again?*

Written after a trip to Lindsborg, Kansas - April 27, 1988

(MARC NEWS, USA Nov-Dec '88)



B
C
D
E
F
G
H
I
J
K
L
M
N
O
34

COTTESLOE

6011 GROVE Bay

Scotch College Jetty & Boatshed

PEPPERMINT GROVE

Butler Hump (Keanes Pt.)

GPO

Mosman Bay

6012

MOSMAN PARK

Chidley Point Golf Club
Chidley Club House

Chidley Pt.

MOSMAN PARK

BLACKWALL RIVER
REACH

Leighton

SWAN SYDNEY

Rocky Bay

Preston Pt.

H.M.S. Leeuwin

Pt. Roe

6158 EAST FREMANTLE

6157 BICTON

6159

WANTLE
Nth. Fremantle

CANNING HWY

3 4 5 6 7 8 9 10 34

JUNE OUTING

WE COULD NOT HAVE ORDERED A MORE PERFECT DAY FOR THE JUNE OUTING. THE LATE START TEMPTED MORE THAN THE USUAL NUMBER OF A'S OUT OF GARAGES AND CARPORTS TO ASSEMBLE AT COV-ENTRY'S IN MORLEY WHERE THEIR OWNERS WERE ISSUED WITH ROUTE SHEETS FOR THE FIRST HALF OF THE RUN. THE SELECTED ROUTE-(THE WOGUL RUN), SKIRTED THE SUBURBS AND TOOK US THE BACK WAY INTO MIDLAND AND FINALLY THE ROSE AND CROWN.

JUDGING FROM THE COMMENTS HEARD DURING THE MORNING, MOST MEMBERS ENJOYED THE VAST DISPLAY OF ARTIFACTS AND ANTIQUS CONTAINED IN THE HALL COLLECTION. ---ALTHOUGH PROBABLY NOT MUCH DIFFERENT FROM THE CONTENTS OF MOST MEMBERS GARAGES.

FIFTEEN MODEL A'S AND HALF A DOZEN MODERNS WERE COUNTED IN THE CARPARK JUST BEFORE WE ALL HEADED OFF ALONG THE RIVERFRONT TO SANDY BEACH RESERVE. LUNCH AND A LAZE IN THE SUN WAS ENJOYED, FOLLOWED BY A SHORT MEETING AFTER WHICH EVERYONE MADE THEIR RESPECTIVE WAY HOME.

P. S. THE SUN DOES AFFECT PEOPLE DIFFERENTLY----MR WHIPPY DID A ROARING TRADE IN THE CARPARK AND A NORMALLY QUIET TYPE WAS SEEN CHATTING UP A BIRD(OF THE FEATHERED VARIETY).

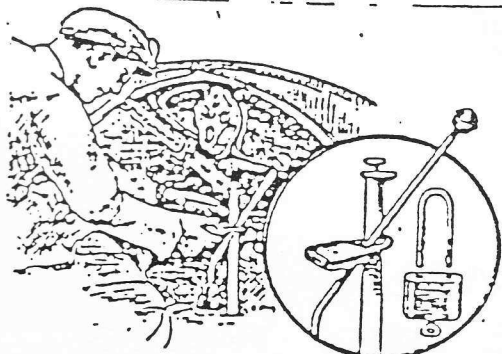
—Did You Know?—

That the Ford Motor Company once ranked as one of the world's largest consumers of timber? Its requirements reached a million board feet per day during manufacture of the Model A. The Company protected itself against a possible lumber shortage through the acquisition of approximately half a million acres of timber land in northern Michigan.

The Company regulated every state of manufacture of the wood used in cars from the standing timber to the finished body part, a cycle embracing four basic industries: 1. Logging, 2. Saw mills, 3. Drying kilns and 4. Body parts plant.

The Ford logging operations were conducted principally in Baraga and Houghton counties and logs were taken to saw mills at Iron Mountain L'Anse and Pequaming which had a total capacity of around 650,000 board feet per day.

The largest body wood working factory was located at Iron Mountain and was capable of making body parts for 10,000 cars per day, besides converting all of the lower grades of lumber into crating, and salvaging the offal into whatever it would make. The wood alcohol distillation plant at Iron Mountain was the largest of its kind in the world.



Easy Method of Locking Gear-Shift and Brake Levers on Model-A Ford

Gear-Shift Lever Locked in Neutral

Owners of model-A Fords can lock the transmission in neutral by lifting the gear-shift lever out of its socket and swinging it across the brake lever, which is pulled back to braking position. A padlock of the type shown in the detail is then slipped around the gear-shift and brake levers.

This CRIME-STOPPER notice was stolen from the HEART OF AMERICA Chapter newsletter, Kansas City, Missouri.

ALL  DAY

OBSERVATION

CRUISE

AUGUST 13TH 1989

ASSEMBLE - 9.00am

START - 10.00 am

CAUSEWAY CARPARK

BBQ LUNCH & SHOW & SHINE
AT FINISH

COST - \$12.00 per car

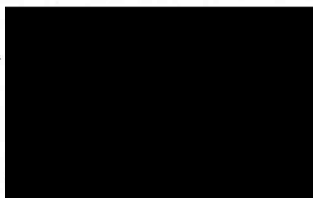
(family bbq pack supplied)
byo drinks

EXTRA BBQ PACKS & ROLLS ON SALE



FOR DETAILS CONTACT

DAVE -
STEVE -
PETE -



} PLEASE ADVISE EARLY AS
TO ENABLE BBQ PACKS
TO BE PURCHASED

FREE MODEL A PARTS AT PORNO FILM NIGHT

With your attention arrested, now the problem is to keep it!

Aren't club Newsletters that cajole and complain a bore? Anyway, they are usually only preaching to the converted so it's all a bit academic really.

ANYWAY, with apologies in advance, it's lecture time because someone has got to say something, so here goes.....

Just being born (although you had no choice in the matter) puts EVERYONE under a series of unavoidable obligations. Getting married, having kids, buying a car, even day-to-day working - every aspect of anything we undertake throughout life puts each and every one of us under obligations.

In the exact same way, when joining any club we agree to abide by the constitutional rules and be involved in the running of that club so that also places us under an obligation to our fellow club members - and ourselves!

Talking to M.A.R.C. (W.A.) members recently there seems to be a severe case of creeping contagious apathy pervading our ranks with an unwillingness to accept even a meagre dose of obligation.

To be involved and contribute to the running of your own club is not a 'life-and death' decision; it will not radically change your life, the environment or the course of international events. What it will do is bring enjoyment to yourself and others and give you a sense of achievement and satisfaction - even if no one remembers to thank you (which is usually the case) you will know and that's the most important thing.

Let's have some 'for instances'....

National Rally -

O.K., a few of you may not have agreed to our club running the 1992 National Meet. NOW, like it or lump it, by an overwhelming majority it's on and it's time for all of us to pull together to ensure a roaring success. We CAN do it and do it well. It's a foregone conclusion that a few members will do most of the initial work and planning. All most members will need to do is agree when asked to assist in some small way.

Quiz Night -

So it is a nuisance to leave your warm chair in front of the TV but life is full of little sacrifices. Sallie Madgett has put in a huge effort to get this event together in an endeavour to raise a few bob (not just from our own select band of members), all we hangers-on have to do is turn up! However, apathy seems to have reared its ugly head to threaten this event. All we need to do is get off our collective duffs and get four friends together, spare a couple of bucks, a few hours of our precious time and a drop of commitment.

Car Displays and Things -

Understandably most of us were very disillusioned after the farce of the C.C.C. Classic Car Show. After such a commendable and considerable effort by an enthusiastic band the end result was undeniably a 'kick in the guts'. Consequently, some thought that the display at the Maddington Shopping Center was a waste of time. However, a small core of members got the thing together and we now have \$250 (plus donations) that we did not have before and that's \$250 we do not have to raise by putting our hands in our pockets!

One person at the shopping centre said: "Just why do you have these cars here?" The member questioned did not wish to appear totally mercenary, so gave the reply: "Because we are proud of our cars and like to show them to others." "Well", he responded, "thank you very much, I really appreciate that." So there you go - it also spreads a little cheer and gives the grandads and parents an opportunity to explain some 'ancient history' to the kids.

Monthly Rallies -

How do we get a volunteer to organise a run each month? Draw a name out of a hat or have a regular compulsory allocation out of the membership register? Your turn will only come around once every three or four years - that can't be too bad. It does not take much effort but, like everything else, it's a thankless task - did you thank the Lynchs for their efforts in organising a very interesting run last month?

Office Bearers -

Everyone seems to be running for cover already - go on, have a go!

If you managed to read through all of that perhaps the tide is turning!

....HERE ENDETH THE LECTURE....

1989 ALL FORD DAY

LEEDERVILLE OVAL - SUNDAY, NOVEMBER 12th

The Falcon GT Club of W.A. have put in a lot of effort to plan and conduct the 1989 All Ford Day. They have loads of sponsors and trophies with backing and support from the media and many businesses. They expect 15,000 people.

They have asked us to be represented - anyway, how could they possibly have an All Ford Day without a display of The Reliable Model A?

Individual entries are normally \$10 each but if we can exhibit 12 cars we get all the money back - or, in effect: enter 12 cars and no money changes hands.

They are producing a magazine for the 'Day' and we can submit a full page article on the 'A' and our club with photos, calendar of our events like the 1992 Rally and even an entry form to join our club...

As an added incentive, we can even run our own fund raising efforts from the stand on the day, such as a competition, (surely we can dream up something different) and the GT Club may even supply the winner's trophy.

They are also running a raffle with prizes like a trip to Bali at \$1 a ticket. If we sell some for them we get half the ticket price. When we sell their tickets surely they will return the compliment if we have a raffle.

Well, I have got my hand up and am willing to co-ordinate our effort and do the copy for their magazine to raise a few more bucks - so will at least eleven others PLEASE contact me and offer their vehicles (plus a few to 'person' the stand on the day). Could I also have a couple of volunteers so we can erect our 'garage' again? If we are going to do it - let's do it in style.

I realise that some people were really 'uninated-off' after the C.C.C. effort but that's all water under the bridge - let's do this one?

Please contact Bevan on [REDACTED] now - Ta!