

Western A Model News.



THE OFFICIAL NEWSLETTER OF
THE MODEL 'A' RESTORERS CLUB (WESTERN AUSTRALIA) BRANCH INC.

June 1989

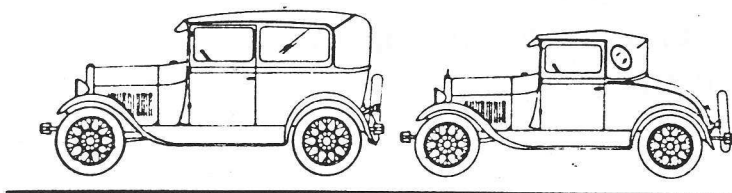
Eric Richards

It is with deep regret that we record the passing of a dear friend and fellow club member.

Eric was a highly respected member of the Veteran and Vintage Car movement on a State and National level. The ever ready smile and helping hand was always available and this together with a first class knowledge of all things motoring made Eric a valued club member and friend.

We all know what a devoted husband and father he was and we extend our deepest sympathy to Jeannane and the girls.

From the Model A Restorers Club of Western Australia.



COMING EVENTS

Date: Sunday June 25th.

Assemble: Coventry's car park, Walter Road, Morley 9.45 a.m.

Venue: Hall Collection Museum, Swan St., Guildford (at rear of Rose & Crown Hotel) 10.30 tour. Discount for Model A members & friends (bring badges). Adults \$2, Children \$1, Pensioners \$1.60.

This collection of artifacts and antiques features a large Match Box car collection and is well worth seeing. It will take roughly two hours to view the whole collection (and that's briskly).

Coffee etc. is available at R & C next door if required. Lunch venue to be advised - depending on weather etc.

If it's raining turn up in Moderns anyway - we need the numbers to make the tour worthwhile.

MINUTES OF MEETING HELD AT DAVIDSON'S HOUSE ON 28TH JULY 1989

APOLOGIES

S. & I. Lawson, L. Barendse, D. & M. Annear.

MINUTES

Minutes read and accepted as read by H. Sharp, seconded A. Letch.

GENERAL BUSINESS

R. Andrews gave an update on the car display at Maddington Plaza. S. Read has made a roster up for members to help at the car display.

Members had a general discussion for fund raising events for the 1992 National Rally.

L. Read advised members the movie day has been cancelled.

J. Williams read a letter from Ningham Station regarding the September long weekend.

B. Bennie gave an account of his forthcoming trip to America.

COMING EVENTS

June 22nd Car Display at Maddington Plaza.

June 25th P. Lynch to arrange.

July 21st Quiz Night.

July 23rd Meeting to be arranged.

August 27th A.G.M.

A.G.M.

A reminder to all members that the A.G.M. is just around the corner and several positions are being vacated. Please give serious consideration to this and be prepared to stand for the various positions.

Meeting closed 2 p.m.

Members please note : Change of address.
Mr Geoff Davies Apartment [REDACTED]

[REDACTED]
Claremont 6010



★ "Don't exaggerate. Gail, just whack it with the newspaper."

RESTORATION RUN, MAY 28th

Acting upon orders from the Model A Club, the rain did not appear once more. The members of the Model A Ford Club, or perhaps for this run, the Modern Ford Club, assembled at the Causeway. With our usual precision, formation moved off on a wandering route up to Ron Pleysier's home in Roleystone, where we were joined by the Andrews and Bennies.

Ron and his family gave us a very interesting morning, showing us Ron's Model A's, including a 30 Model Tudor which is coming along nicely. The Model A was sharing garage space with an Ershine, belonging to Ron's brother. What a lucky Ershine to bed down with a Model A! Ron and his father also showed us all how they make their beautiful bells.

All too soon it was time to go. We then wound our way back down the hills to the Davidsons' place, where Colin and the girls welcomed us. The meeting was held in a cosy courtyard till a few drops of rain, obviously renegades, sent us scurrying into the carport. We then descended into Colin's workshop, where we all ogled his cars and equipment, including a vintage Vauxhall, a red Porche and a Model A Ford Tourer, almost fully restored and hanging in pieces around various walls. Several members were seen to acquire dusty bottles of wine and plants. Kelvin Pepper descended on any Model A engines he could find, checking numbers. I think he likes these restoration runs.

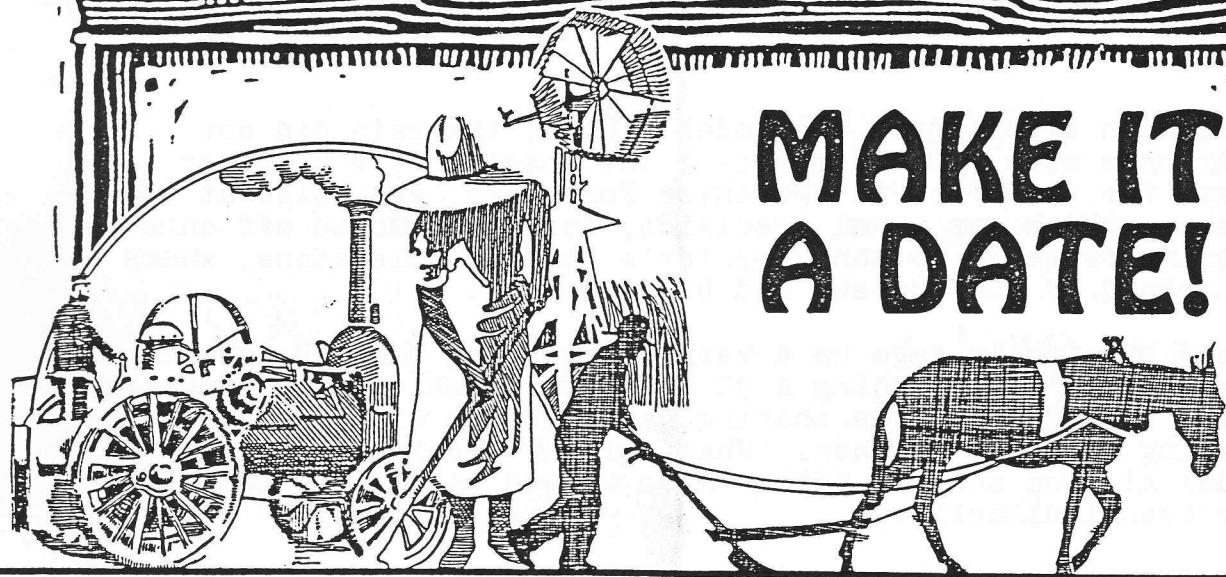
We mustered and headed off to the Williams' through the back of Armadale. We were joined by our Rally Marshal, Max, who's late excuse was "I couldn't get out of bed!" A likely story!

Jim's 29 Model Woody is starting to take shape with most of the mechanics finished. It is truly a job of major proportions, but at least he's got a good set of plans to work to. Fancy our Water Authority having a set of plans.

After afternoon tea and a good long chat, we all headed off on our separate ways. These restoration runs are always very enjoyable, we wish to thank the members and their families for their hospitality.

We had seven Model A's, Reg Blewett's Sunbeam Talbot (a very nice car) and too many Moderns, and Max's Roadster.

I never thought I'd hear the Cooke family say they didn't want to go out in the Model A in case they got wet. Guess who's been spoilt rotten in driving their Tudor.



**MAKE IT
A DATE!**

**WYALKATCHEM
VINTAGE TRACTOR &
MACHINERY FAIR**

Saturday, October ¹⁴ ● - 12 noon - 9pm

Sunday, October ¹⁵ ● - 9-30am - 5pm

* Wyalkatchem Trot meeting Saturday 2pm - 4:30pm

*** CENTENARY OF TRACTORS**

- * Working Displays of Vintage Tractors & Machinery
- * Vintage Cars & Motor Bikes * Clydesdale Working Team
- * Arts & Crafts Display * Flower Show * Side Shows
- * CBH & Agricultural Museum * Old Schoolhouse Museum
- * Entertainment Saturday night * Meals on sale
- * Bar Facilities * Lots Lots more!

ADULTS \$5

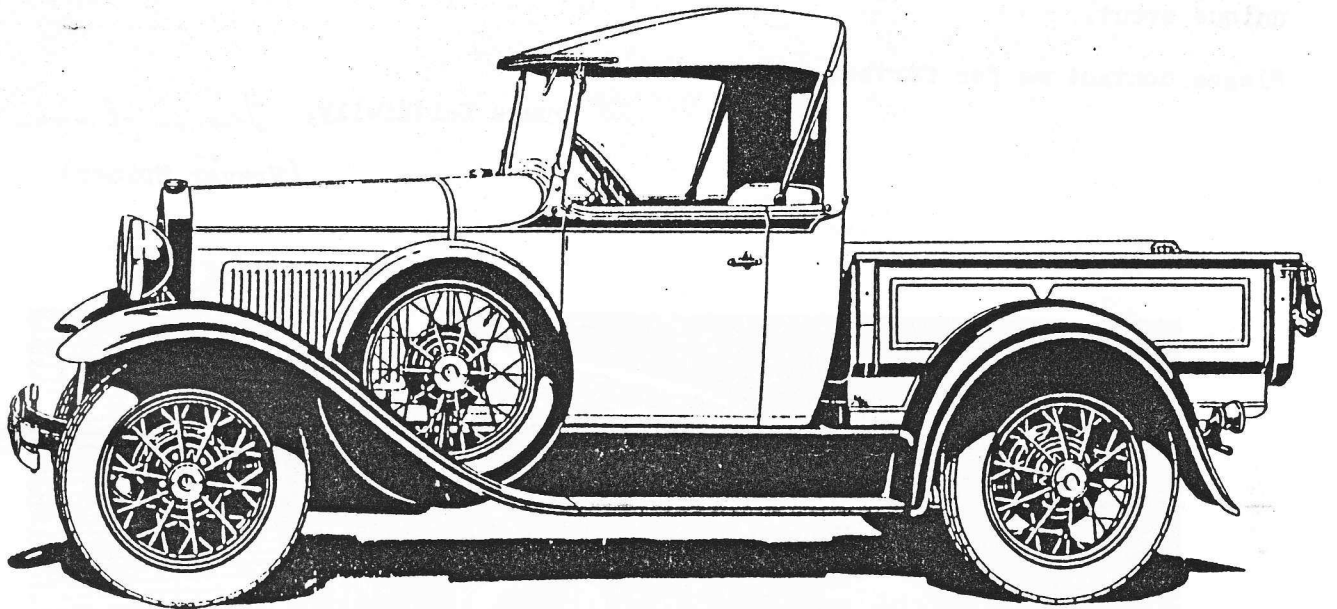
SENIOR CITIZENS \$1

Children under 16
free

For further details
Phone: (096) 811166
313041 - 815036



A home without one



is like a pub with no beer.

REMEMBER. Only 56 weeks until the 11th National Meet, but who's counting. We are all too busy cleaning, painting, plating, and polishing aren't we. What could be more enjoyable than driving your pride and joy for four days of rallying with 100 or more MODEL A's. Keep up the good work.

Heathmont, 3135,
Victoria.

12th. May, 1989.

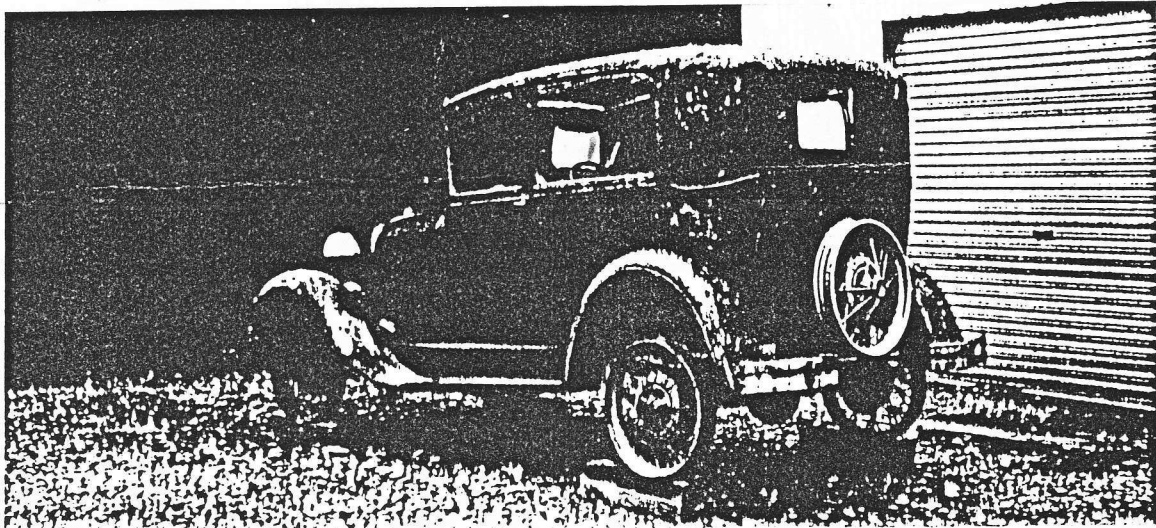
Dear Club Secretary,

I'm aware from what my friends in the car clubs tell me that they're always interested in having a film/video to include in their meetings from time to time. I'm an independant video producer, been interested in vintage and veteran vehicles all my life, and have just completed a 2 hour video of the Victorian leg of The Bicentennial World Rally to Canberra last year, and believe that this is the only video of this event available to the general public. Castrol produced a national version of this event, using 20 minutes of my material, but it was only available to rally participants. We were the only crew in Australia, to cover a complete leg from start to finish, and we're very enthusiastic with the final product. I've had previews at car clubs and my own home, which have resulted with a very positive response.

As most club meetings have to resolve a certain amount of business, I've produced an edited 1 hour version, specifically for showing on club nights. Unfortunately, due to the high cost of this production (we used only broadcast-quality gear) I have to charge a \$20 rental plus postage, but I can assure you of a wonderful evening's viewing of this unique event.

Please contact me for further information.

yours faithfully, *Trevor Spicer*
(Trevor Spicer)



FOR SALE.

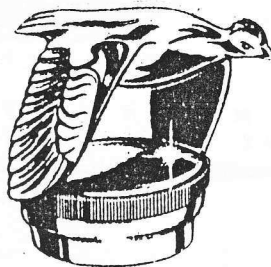
1928 MODEL "A" TUDOR, BODY IS TOTALLY RUST FREE & CAR IS TOTALLY COMPLETE. ALL MOULDINGS, HORN, RUNNING GEAR, COMES WITH REPRO GRILL VALENCE PANELS FRONT SPLASH APRON BONNET SILLS ETC., SPARE : CHASSIS 3 MOTORS BUMPERS SINGLE DISC CLUTCH SET UP. PRICE : \$7,400, o.n.o. PHONE ALAN THOMPSON [REDACTED] B/H

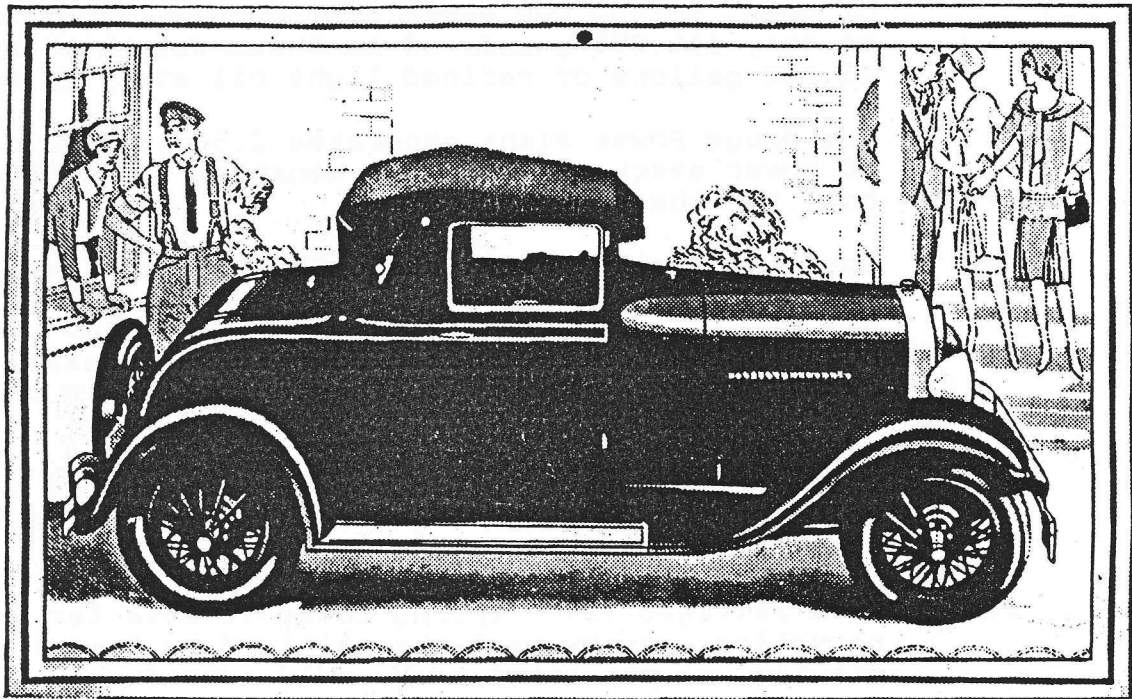
[REDACTED] A/H [REDACTED] FAX;

WILL SELL BODY SEPARATE FROM CHASSIS AND RUNNING GEAR.

DID YOU KNOW THAT IN 1928 AT THE FORD FACTORIES

1. The 240 coke ovens produced on average 3,300 tons of coke, 50,000,000 cubic feet of gas, 40,000 gallons of tar, 110,000 pounds of ammonium sulphate and 12,000 gallons of refined light oil every 24 hours.
2. The Rouge Power Plant generates 2,500,000 kilowatts of power every 24 hours and consumes 2,200 tons of coal for the same period.
3. The eight boiler stack stand 333 feet tall and 13 feet across at the top.
4. By shipping bodies knocked down it was possible to get 77 tudor sedan or 130 Phaeton bodies in one freight car.
5. There are 734 spot welding operations and 14 butt welds on the body and 591 miscellaneous welds on the chassis, a total of 1,339.
6. Ford salvaged 199 shipping board vessels for metal recycling - every part was utilized by Ford Industries nothing was permitted to be sold outside.
7. The Annual Capacity of the Ford Glass Plants were
Glassmere P.A. 7,000,000 square feet
Rouge 10,000,000 square feet
Twin City Plant, St. Paul 3,000,000 square feet.
8. The slag from the blast furnaces is used to produce high quality Portland Cement.
9. Waste paper and rags that accumulated at various plants are baled and sent to the Ford Paper Mill for recycling.
10. In the wire factory a 5/16" copper cable one foot long will produce 6,420 feet of .0039 inch diameter.
11. More than 25,000 wheels were made daily at the Hamilton Plant. From the raw material to the finished product the wheels travel on 6 miles of conveyor constantly moving and not a single part is allowed to touch the floor.
12. The Highland Park radiator plant was capable of producing 9,000 radiators a day.
13. The distributor cap body rotor and gear lever ball are made from a substance called FORDENSITE. This is a mixture of sawdust, phenol and formaldehyde after heating and mixing parts are formed in presses at 1,500 PSI and heated to 350degF with steam. When finished parts can only be machined with diamond tipped tools.





The New Sports Coupe has clean, graceful lines, with an imported all-steel body, perfectly finished and appointed.

This is where Ford stands

FOLLOWING the introduction of the new Ford, came a year of frantic change in the motor industry—a period of strained effort to meet the higher standards set by the remarkable new Ford car. At this stage people are wondering what are Ford's views upon "fours" and "sixes" The answer is clear-cut.

When the new Ford was planned, the purpose was to produce a car that would radically advance the existing standards of appearance, performance, quality and value.

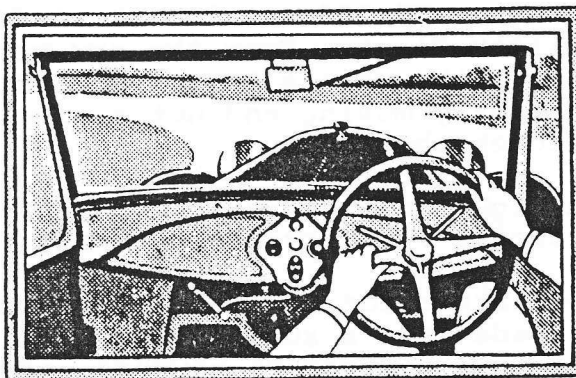
How completely this purpose was achieved is well known. How Ford developed such features as riding comfort, safety, tyre economy, lasting silence, road stability—all this is history.

But even more remarkable is the way in which the new Ford gives speed, acceleration, climbing power and smoothness. These are purely engine functions, fulfilled in a manner that many "sixes" have never before, or since, approached. Yet Ford achieved this

outstanding development with a four-cylinder motor, so living up to the Ford ideal of giving the most for the least money.

There has been no compromise. The new Ford gives astounding engine performance with the utmost simplicity of design and without neglect to provide advanced standards in other functions of the car—gives it without imposing upon the user the extra maintenance and extra petrol consumption of added cylinders.

Yearly models and extra cylinders may be adopted by others as defensive measures; the fact remains that Ford continues to hold world leadership and public confidence.



Clear road vision is provided for the driver by the large one-piece windshield and rear view mirror. Every detail which could add to the safety and enjoyment of motoring has been incorporated in the new Ford.

Behind the new Ford are manufacturing methods as unusual as the car itself. Without these methods it would be impossible to give you the value that is in this fine car; because of them the new Ford is unquestionably the best car that can be produced at a low price without sacrificing quality in any part.

Ford maintains values by a policy of steady improvement without yearly models. Improvements are planned so that they may be incorporated in previously built cars.

Ford Service extends throughout Australia—at your command wherever you may travel.



Made in the Empire

The new Ford is complete in every detail. Bumpers front and rear, and spare steel wheel (complete with tyre and tube) are standard equipment at no additional cost.

Your nearest authorised Ford Dealer can arrange easy terms of payment on all new models.

FORD MOTOR COMPANY OF AUSTRALIA PTY. LTD.
 GEELONG SYDNEY BRISBANE ADELAIDE PERTH B.C. 11/28