

WESTERN

'A' MODEL NEWS

THE OFFICIAL NEWSLETTER OF
THE MODEL A RESTORERS CLUB (WESTERN AUSTRALIA BRANCH) INC.

October 1983

Next Meeting : Saturday, 29 October 1983
: Place - Causeway Carpark at 1:30 p.m.

A pleasant short run, ending up at a Park for afternoon tea.

+++++

Last Meeting :

Well, if you missed the October 9th meeting, you missed a beaut day. Toni Mahony had a very pleasant run for us and we drove on several "back block" roads that most of us had never heard of. We also drove on some we don't want to hear of again ! The sun shone and all the cars ran well - in fact it occurred to me that we seldom, if ever, have any sort of breakdown with our Model A's. Either we are good mechanics or they are exceptional cars - bit of both I think.

The lunch stop was at Lake Gngarra and we all found ourselves in amongst a lot of other people who also thought it was a good spot for lunch. However, we ended up split into two groups - there was "that lot over there on the lawn" and our lot "over there in the bush" in what was affectionately called 'Dugite County'. Laurel Cooke took the longest to sit down, for various reasons, one of which was that every time Tom Eastough rustled the grass, Laurel thought it was a snake....and in Laurel's "condition" it wasn't funny!!

After lunch we followed our route sheets by a long, devious and sometimes tortuously repetitive route to a park in Padbury, where the survivors demolished their afternoon tea. Next time I'm taking a cut lunch and a spear! All round though, it was a terrific day and I'm sure everyone enjoyed themselves -- thanks Toni.

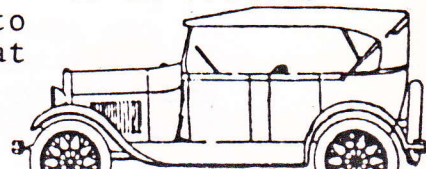
It was nice to see such a range of Model A's out in force on the run too. This time we had Phaetons, A Tudor and two Pickups (they are not Utes!) - no Roadsters or Coupes this time though.

All Ford Day :

We have been asked by the G.T. Falcon Club if we would join them to put on an "ALL FORD DAY" early next year. It will probably be held at "Adventure World" and would consist of Fords from all years. When a definite date is decided, you will be advised.

Combined Car Clubs :

In the absence of our President, Mike Cooke and I attended a recent meeting of the newly resurrected "Combined Car Clubs". The aim is to present a unified voice of all Incorporated Car Clubs in various matters; Licencing, etc. or in representations to Government re import duty or any legislation that may affect our hobby. This unit will also organise and co-ordinate the Annual "Concourse" and car display.



Xmas Dinner 1983:

See the separate sheet in this Newsletter. It is hoped that as many members as possible can attend. If you have never been to the Civic Theatre Restaurant, you have missed something. It is not just a Restaurant, but has a riotous variety program that goes on thru the whole evening. There is always something for everyone's taste and if it gets a bit naughty here and there, so what - we're all over 21!

So - get your old man's battery recharged and ring Toni Mahony TODAY and say you'll come along !!

Restoration Information:

The following five items are passed on in the spirit that they may help someone restoring their 'A'.

WINDSCREENS: - If you need laminated safety glass cut and installed in your frame, try PETER'S GLAZING SERVICE in Balcatta Road, Balcatta. Cost for Model A is \$40 which includes supply and fitting. Black 'Silastic' is a good sealer.

RADIATORS: - Latest price from Perth Radiator Service in Beechboro Road, Bayswater is \$246. The core is a Fiat Tractor Core which just fits.

SPRAY PAINTING: - If this is a problem to you - try a C.I.G. 'Little Beaver'. It is a low pressure outfit but will handle undercoat, spray putty and finishing coats. The important thing is to thin the material strictly by measure. Generally 1 measure paint to 1½ of thinners is ideal. Wire a piece of pantyhose over the brass tube inside the Pot and you don't have to bother about straining the paint.

"MADE IN AUSTRALIA" : - This little aluminium plate was nailed to the side riser of the front passenger seat. They are available from Dennis Neilsen, 73 Newdegate Street, Greenslopes, Brisbane, 4120 for \$4 each and are of good quality.

TASMANIAN OAK: - Normally hard to get in W.A. Supplies now available again at Wilsons Timber & Hardware, Balcatta Road Balcatta. Large quantity of smaller sizes already dressed. If you want the larger sizes, it's available to your order.

Notice regarding Licensing of Motor Vehicles (Vintage & Veteran)

A very important letter has been received from the Police Department regarding licensing of motor vehicles on a Concessional basis. A copy of this letter is reprinted below for all members' information:

From: Police Department - Traffic Licensing & Service Centre,
Perth, W.A.

"Dear Sir,

Reference is made to the Certificate of Roadworthiness produced by members of your Club when making application to the Police Department to licence a motor vehicle.

The Police Department now requires this certificate to be attached to the office copy of the Licence Receipt and retained for record purposes.

As you can well appreciate, the Police Department must ensure that the vehicle meets the required standard of roadworthiness and must be able to produce the subsequent documentation if

snugly into block. An etched or worn pump bottom plate can be reversed to provide a new surface. Be sure there is a gasket under the pump shroud cover to assist in cold oil flow and minimize pulling in of air. Crankcases are pumped nearly dry on cold starts and may show zero on oil gauges upon right turns until warm-up.

- If you have a doubt about oil pump operation, temporarily install a radiator stopcock in oil gallery access hole on side of block. A moment of opening will prove the point. A permanent oil gauge is best but remember, ½ to 1 ½ pounds of pressure on a hot engine is normal.
- Some new oil filler caps permit a complete close off of filler tube. Crankcase pressure will blow through back main bearing and other escape points. Either back off about ¼" on cap when installing or bend down the lugs already on some caps to keep it from closing off filler tube. This will save a lot of oil puddles on the garage floor.

CARBURETOR

- Do not turn on gas supply to a dry carburetor without immediately starting the engine. A puddle of gasoline can flow up in a hurry under the carburetor just waiting to flow off. Engine vibration usually seats the float needle valve to set things back to normal.
- Choke rods sometimes rub against the carburetor throttle rod setting up a noisy vibration. Slightly bend out the ball-tipped arm of the throttle plate just enough to clear the point of contact. Use two small wrenches so as to take the bending strain from throttle plate swedging.
- Don't toss out that Air Maze carburetor air cleaner. A clean and well oiled unit is better than nothing until you put on one of updates made for the purpose. Do check for high speed performance after the installation of any air cleaner; missing may occur.
- Reassembled carburetors sometimes display binding throttle and choke plates. Loosen the butterfly screws and "home" the plates to properly center in the openings.

FUEL SYSTEM

- Be careful when installing gas lines. Excessive extension of the tubing beyond the compression ferrule can block fuel flow. Never allow more than ¼ inch beyond ferrule.
- It is fairly easy to "calibrate" a gasoline gauge through filler by prudent bending of float wire. Most originals and replacements provide sufficient range so that gauge can be set to show somewhat past zero when cork is on bottom of tank and just full on the "F." The "past zero" setting assures some remaining gasoline if gauge is "floating."
- The original gasoline tank filler screen triggers the auto-shutoff on gas station hoses making a tank fillup a painfully slow procedure. Modern filter systems on gas station pumps tend to preclude any practical use of the screen. Ford omitted this screen on all T's, B's and V-8's. A number of Model A owners are removing this screen except for serious judging events.
- Pesky leaks in firewall mounted glass gasoline filter bowls are usually made worse by reefing up on securing bail nut. A neoprene gasket repair kit used on some tank type garden sprayer hand pumps (or cut from stock neoprene) to replace the cork gasket will stop the leaking problem if filter body has not been pulled out of shape.
- Some hard to find carburetor leaks are due to faulty gaskets under the jets, especially the main and cap jets. Leaky float

needle valves and externally viewed gaskets are most obvious.

GENERAL HINTS

- An efficient and effective mechanic never allows wiping rags to cover over tools or parts, has duplicate sockets and wrenches of most often used sizes, immediately returns all tools in use to a "home" area and keeps working zone free of oil and clutter. This simple idealism does work.
- A free turning front wheel hub makes an excellent wheel balancer. Mount a wheel, turn and test for heavy point, add standard wheel weights on opposite side as needed (add weights on both sides of wheel if over 1 ounce). For 21" wheels, wrap ¼" lead wire around spokes. Lead wire can be found at most fishing supply stores.
- A bit of STP or Lubriplate on surfaces of "forcefit" gears, bearings and bushings will help to ease assembly. This includes crankshaft timing gear, steering worm, rear end carrier bearings, water pump, king pin bushings and similar.
- Old parts make excellent drifts or adapters for driving home new bushings, bearing races and related. Wear protective eye gear since some of these parts are made of hard steel.
- Most bench vises will neatly push in the bronze bushings used in clutch and brake pedals. A slight bevel filed or ground on leading edge of bushing simplifies the process.
- Replacement fan belts always seem a bit short and present a testy challenge to install. Do not force the belt over the pulleys or a distorted pulley or torn belt will result. Temporarily pull the generator mounting bolt, install belt and reinstall bolt and adjust tension. Belts about 1" longer are available and can be installed without fuss.
- After a few hundred miles, test for "operational" toe-in or toe-out by rubbing hand across surface of front tires. A feathered edge on tread will point up alignment problems better than most alignment racks. Minor adjustment of tie-rod can correct the problem.
- To save a potential problem, it is best to secure Roadster and Phaeton bodies on the frame in final adjustment before installing the top. Some ugly wrinkles can develop otherwise.
- Hair spray pumps have plastic pickup tubes that make excellent extensions for oil cans.
- Chase all used threads with taps and dies before parts assembly. This will assure easy assembly, avoids sheared bolts and can standardize torque readings if used.
- A few Model B timing gear covers find their way to Model A's. "B" covers have a built-in advance and accurate Model A timing is impossible using the "pin-in-the-hole" method. Peep into #1 with plug removed and top dead center on compression stroke. Retard spark and set distributor as usual. This will by-pass the pin method and ignore "B" cover.
- For the adventurous, speedometers can be adjusted to correct the miles per hour portion. A shorting bar on the rotating magnet can vary the speed indication several miles per hour. Open the magnet gap to increase speed indication, close down the magnet gap to show less speed.
- A tablespoonful of baking soda in a tuna can of water should be handy as a finger dip when working on a battery. Saves clothes, tools and eyes.

AMERICAN PARTS SUPPLIES

Snyders Antique Auto Parts,
12925 Woodworth Road,
New Springfield,
OHIO. 44443

Specialized Auto Parts,
7130 Capitol,
Houston,
TEXAS. 77011

Connecticut Antique Ford Parts,
985 Middlesex Tpke,
OLD SAYBROOK. CT06475

Antique Auto & Parts,
2144W Superior St,
Dept CP,
CHICAGO. IL 60612

Mac's Antique Auto Parts,
P/O Box 1051, Lincoln Avenue,
LOCKPORT. N.Y. 14094

Vintage Auto Parts,
402 West Chapman,
ORANGE. CA 92666

Obsolete Ford Parts,
6601 S. Shields,
OKLA CITY.
OKLA. 73149

Rick's Antique Auto Parts,
Box 662,
SHAWNEE MISSION
KS 66201

J.F. Firebirds Part Mart,
Box 4371 Dept X,
OVERLAND PARK.
KS 66204

Job Lot Automotive Inc.,
98-11 211th Street (P.O. Box A),
Queens Village,
NEW YORK. 11429

Antique Auto Centre,
330 Bennett Road,
ELK GROVE VILLAGE.
IL 60007

upholstery

Consistent Tone
Kanter Auto Products div,
Packard Industries,
76R Monroe St,
BOONTON. NJ. 07005

Bill Hirsch,
396 Littleton Avenue,
Newark,
NEW JERSEY 07103

Le Baron Bonney Co.,
6 Chestnut Street,
AMESBURY.
Mass 01913

Bob's Automobilia,
RD 2 Box 137
Annandale,
NEW JERSEY 08801

engine bits only

Engine Bits
Antique Engine Rebuilding,
4451 Ramsdell Avenue,
La Crescenta,
CA 91214

