

# WESTERN

# A MODEL NEWS

THE OFFICIAL NEWSLETTER OF  
THE MODEL A RESTORERS CLUB (WESTERN AUSTRALIA BRANCH) INC.

Next Meeting: SUNDAY JUNE 26, 1983  
TIME: 1:00p.m. for 1:15 departure  
PLACE: BELMONT FORUM CARPARK  
Abernethy Road end of carpark.

Our June meeting will be a rally into the hills (not the very high hills) This will be organised by Toni Mahony in her usual inimitable style. If the current weather holds good it should be a very pleasant afternoon - so - pack your afternoon tea and come along !

\*\*\*\*\*

Last Meeting: We met at the Veteran Section Clubrooms in Applecross and after the meeting viewed some slides of South Australian vintage cars taken by Ray Mahony and Bill Bennie showed a movie on Tasmania. Frank Cocks brought along his father's very original A Model to the meeting and had a group of members pouring over it with interest.

An effort is being made to arrange a group booking at the Civic Theatre Restaurant and as soon as some figures come to hand (no pun intended) you will be advised. It should be a very good evening.

## Annual General Meeting:

This is to be held at the Veteran Section clubrooms - Hickey Street, Applecross, on SUNDAY JULY 31, 1983.

All Club Office bearers retire and all positions will become vacant. Any club member is eligible to be nominated for these positions. So - what about some new blood in the Management of our club !

## American Club Activities:

It is proposed to show a particularly interesting 25 minute slide show at our Annual General Meeting after business is completed. This has just arrived from the U.S. and is based on Club life in the "Penn-Ohio" Club. There are beautiful cars and scenery plus quite a few aspects of the operation of Model A Clubs over there. DON'T MISS IT! - it is well worth seeing.

## Accounts:

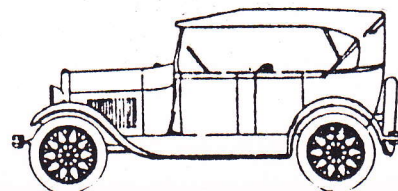
The Club Funds as at 31 May, 1983 stand at \$306.01. During June there will be deductions for postage stamps and club room hire charges.

## Bits and Pieces:

As a reminder for 'old' members and as new information for recently joined ones -

Tyres and Tubes - Eric Richards & Bill Spencer are our local agents for "Antique Tyres". Give Eric a ring on 293 4014 or Bill on 381 6188.

Send your 'Wanted or For Sale' adds to the Secretary for publication in the newsletter.





## PIPELINE RECOMMENDATIONS

As an aid to our customers, the following is a list of pipe recommendations for laying waterlines and other such uses around the drill site. Naturally, each drill site requirement or customer preference will cause variations; the following list is only offered as a general guide for pipe selection:

1. All pipe is to be made of a long hole, surrounded by metal or plastic centred around the hole.
2. All pipe is to be hollow throughout the entire length - do not use holes of different length than the pipe.
3. The i.d. (inside diameter) of all pipe must not exceed the o.d. (outside diameter) otherwise the hole will be on the outside.
4. All pipe is to be supplied with nothing in the hole so that water, steam or other stuff can be put inside at a later date.
5. All pipe should be supplied without rust; this can be more readily applied at the job site.  
  
(NOTE: Some vendors are now able to supply prerusted pipe. If available in your area, this new product is recommended as it will save a great deal of time on the job site.)
6. All pipe over 500 ft. (153m) in length should have the words "LONG PIPE" clearly painted on each end so the drill crew will know it is long pipe.
7. Pipe over 2 miles (3.2 km) in length must also have the words "LONG PIPE" painted in the middle so the crew will not have to walk the entire length of the pipe to determine whether or not it is long pipe or short pipe.
8. All pipe over 6 in. (152mm) in diameter must have the words "LARGE PIPE" painted on it so the drill crew will not mistake it for small pipe.
9. Flanges should be used on all pipe. Flanges must have holes for bolts quite separate from the big hole in the middle.
10. When ordering 90<sup>o</sup>, 45<sup>o</sup> or 30<sup>o</sup> elbows, be sure to specify right-hand or left-hand; otherwise you will end up going in the wrong direction.
11. Be sure to specify to your vendor whether you want level, uphill or downhill pipe. If you use downhill pipe for going uphill, the water will flow the wrong way.
12. All couplings should have either right-hand or left-hand threads. Do not mix the threads; otherwise as the coupling is being screwed on one pipe, it is unscrewing from the other.