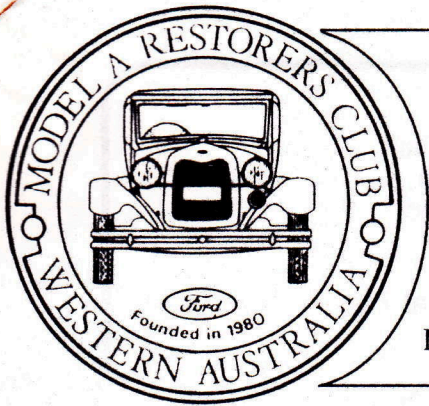


1993

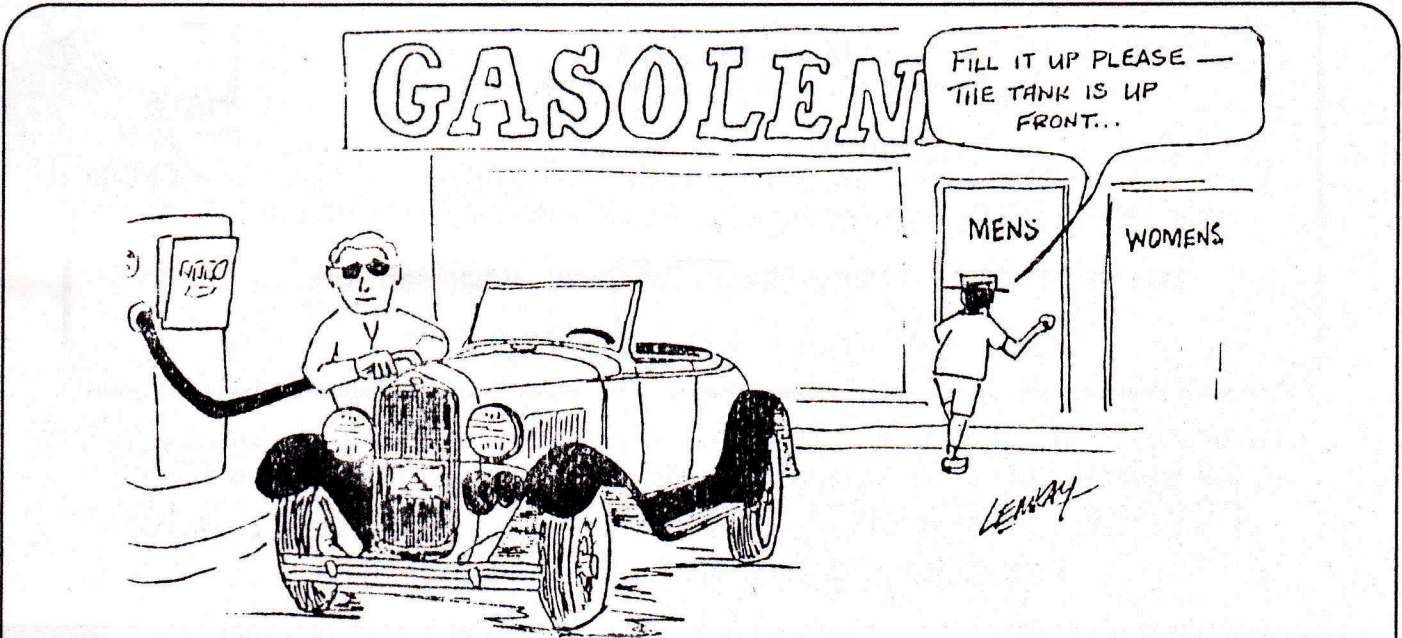


# Western Model A News

Official Newsletter of the  
MODEL A RESTORERS CLUB OF WESTERN AUSTRALIA, Inc

Year XIII Number VI

JANUARY, 1993



## 1992 - 1993 CLUB REGISTER

The new Club Register is enclosed - just fold the two sheets in half! Once again, this has been compiled from information available; of the 86 family memberships, 33 returned the form requesting information for the records. Please advise of any incorrect, or incomplete, data so that Club records can be corrected. The opportunity to renew memberships was left open for five months with regular, personal, reminders in the Newsletter. So, total membership is exactly the same as last year. We have eleven new members, however, seven elected not to renew their membership (two had sold their Model A), two resigned, one was expelled and one deceased. The number of Model A Fords owned by Western Australian members has decreased from 119 to 113 - amazingly enough, the number of **restored** Model A Fords has actually increased by one, with more restored than unrestored! Is this the first time that this Club has had more restored than unrestored Model A Fords on the Register - and is it a continuing trend? Forty-five of the restored vehicles belong to metropolitan area members - Club meetings in future with over 40 Model A Fords? A member mentioned recently that he felt embarrassed about turning up at meetings in a "modern" - **no problem** - that's what your Club is all about, come along, check out the cars, ask questions and get them answered to help you with your plans and your restoration.....

Don't miss the next "gathering" - **Sunday, JANUARY 10, 1993 - 10.30am**  
Traditional PICNIC IN THE PARK - Manners Hill Park, Keane/Lilla Streets, Peppermint Grove

OFFICE BEARERS: President: LAUREL COOKE [REDACTED] Secretary/Treasurer: HELEN SHARP [REDACTED]  
Vice-President: ANGELO CALLEJA [REDACTED] Vehicle Examiner: STEVE READ [REDACTED] Editor: BEVAN SHARP [REDACTED]

COPY DEADLINE: by the 1st of every month to: [REDACTED] Palmyra, W.A., 6157

VIEWS EXPRESSED HEREIN ARE NOT NECESSARILY THOSE OF M.A.R.C. W.A.

**Sunday, January 10, 1993**  
 Annual, Traditional *Picnic in the Park* at Manners Hill Park  
 corner of Keane and Lilla Streets, Peppermint Grove.  
 Meet by 10.30am - bring your lunch for a relaxing Picnic.

**Sunday, February 14, 1993**  
 ☺ Valentine's Breakfast in the Park at Ley Street Park, Como at 7am

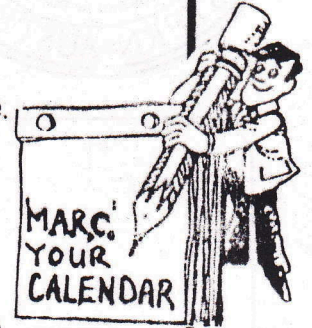
**February 27, 28, March 1, 1993**  
 Long weekend to Kirrup organised by JEFFREE family  
 If a local alternative run is also needed - ANDREWS family will organise.

**March 13, 1993**  
 for 15 days - Tasmanian FIVA World Rally.

**Sunday, March 14, 1993**  
 Avon Valley Vintage & Classic Fair at Northam  
 organised by The Avon Valley Vintage Vehicle Association of WA (Inc).

**March 21, 1993** - Annual Classic Car Show - Whiteman Park.

**April, 1993** - Organised by PEPPER family.



*Scratching your head trying to remember where you saw an article in this Newsletter on a particular subject? This may solve your problem.*

## INDEX OF BASICALLY TECHNICAL ARTICLES October, 1989 to December, 1992

AUSSIE MODEL A	Nov '91
'AR' NOT AN 'AR'	Feb '90
ASSORTED TIPS - range of short tips	Feb '90
ASSORTED TIPS - range of short tips	May '90
ASSORTED TIPS - range of short tips	Aug '90
ASSORTED TIPS - range of short tips	Sept '90
ASSORTED TIPS - range of short tips	Oct '90
ASSORTED TIPS - range of short tips	Nov '91
BODY COLOURS	June '91
BODY SQUEAK	June '92
BRAKE ADJUSTMENTS	June '91
BRAKES	Dec '90
COIL POLARITY	March '91
CYLINDER HEAD - nut tightening	Aug '90
DISTRIBUTOR PROBLEMS	Nov '90
ENGINE COMPARTMENT FINISHES	March '91
ENGINE NUMBERS - Canadian	Nov '92
ENGINEERING THE MODEL A	Jan '92
FORD, Edsel	Jan '90
FORD, Henry	June '90
FUEL SHUT-OFF VALVE - repair leaks	March '90
FUEL SHUT-OFF VALVES	March '91
FUEL TANK GAUGE REPAIRS	Sept '92
GEARBOX information	Nov '92
GENERATOR rebuilding	Jan '90
GM REPORT ON MODEL A	April '90
HAND BRAKE RATTLE	Jan '90
HORN Maintenance	Jan '90
MODEL A LAUNCHED	April '90
OIL - Engine Weight	Dec '91
OIL BREATHER PIPE changes	Aug '91
OIL PAN LEAKS	Feb '92
OIL PUMP REBUILDING	Dec '91
OILS	April '91

PART NUMBERS - interchangeable	May '92
PARTS - vital changes to watch for	Dec '91
PARTS NUMBERING SYSTEM	Jan '90
PISTON RINGS	Nov '90
POINTS & CONDENSERS - Fitting Modern	Oct '89
REAR END noises	Aug '91
ROLLING REMEDIES by Steve Read	Jan '90
SHOCK ABSORBERS	Sept '91
SPARE WHEEL CARRIER	Dec '90
SPEEDOMETER - oscillating?	Jan '92
SPRING SPREADER	March '90
STEERING BOX LUBRICATION	Nov '92
STEERING BOX SERVICING - Part 1	April '92
STEERING BOX SERVICING - Part 2	May '92
STYLE CHANGES 1928-31	April '91
THERMOSTATS	Nov '90
THERMOSTATS	March '92
TINY TIPS - gasket template/oil filler	Nov '89
TINY TIPS - clean wheels/charge rate	Feb '90
TINY TIPS - bumper seat	March '90
TINY TIPS - liquid capacities	June '90
TINY TIPS - seized motor/Bendix bolt	Sept '91
TINY TIPS - easy change points	Dec '92
TRANSMISSION	April '91
TROUBLE LOCATION - Part 1	April '92
TROUBLE LOCATION - Part 2	May '92
TROUBLE LOCATION - Part 3	June '92
TROUBLE LOCATION - Part 4	Oct '92
WATER PUMP - end play suggestions	Nov '90
WHEEL BEARINGS - front	March '91
WHEEL HUB differences	Aug '91
WHEEL WARNING	April '91
WINDSCREEN WIPERS - Vacuum	Nov '89
WOOD - Model A Restoring	Nov '91

# SHIPMENTS OF MODEL A FORDS FROM CANADA TO AUSTRALIA

This information is from the official Archives of Ford Canada

YEAR TO DATE - END OF DECEMBER, 1928

	Phaet	Road	Bus Coupe	Sport Coupe	Tudor	Fordor	Pass Chas R.R. St	Phaet Chass	Road Chass	Comm Chass	Truck	TOTAL Car/Truck	Tractor *
Adelaide	1	1		37	77	27	14	1094	56	130	267	1704	83
Brisbane	1	1		44	115	24	37	1268	83	484	467	2524	209
Geelong	2	2	11	180	497	188	55	2574	225	584	624	4942	272
Perth	1	1		34	127	35	14	984	56	259	417	1928	176
Sydney	1	1		203	435	172	51	2740	199	556	592	4950	323
Aus. Total	6	6	11	498	1251	446	171	8660	619	2013	2367	16048	1033

\*ex Dearborn

YEAR TO DATE - END OF DECEMBER, 1929

	Town Car	Sport Coupe	Tudor	Ford'r Sedan	Town Road R.S. Chass	Taxi Cab	Pan Del	Phaet Chass	Road Chass	Comm Chass	Truck	TOTAL Car/Truck	Tractor *
Adelaide			5		72			330	135	83	175	800	122
Brisbane		5		15	109			768	157	346	301	1701	339
Geelong	1			60	1	263	1	1	1121	223	408	750	349
Perth				140		56			234	20	65	475	325
Sydney			30		285			1248	224	523	1200	3650	203
Aus. Total	1	5	35	215	1	785	1	1	3701	759	1425	2901	1338

Lt Delivery

\* ex Dearborn

YEAR TO DATE - END OF DECEMBER, 1930

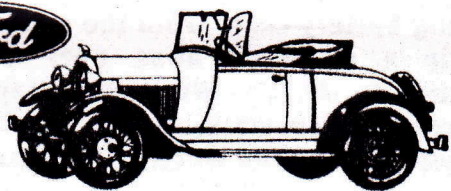
	Sport Coupe	Pass Chass	Comm Chass	Truck AA131	Truck AA157	TOTAL	Tractor*
Brisbane	8	636	229			873	327
Geelong	32	1431	159	4	1	1627	224
Fremantle	4	294	76			374	191
Sydney	30	1173	170			1373	266
Aus. Total	74	3534	634	4	1	4247	1008

\*ex Cork

ACCORDING TO THE COPIES OF THE OFFICIAL RECORDS RECEIVED,  
NO VEHICLES WERE DELIVERED TO AUSTRALIA IN 1931!

If anyone is interested, BEVAN also has the complete records of cars exported from Canada to Australia through to December, 1932 (V8 and Series B4). Also details of all cars shipped (1928-1932) to: South Africa, India, Singapore, Africa, etc and New Zealand (1930 -1932 only).

## ALL FORD REUNION

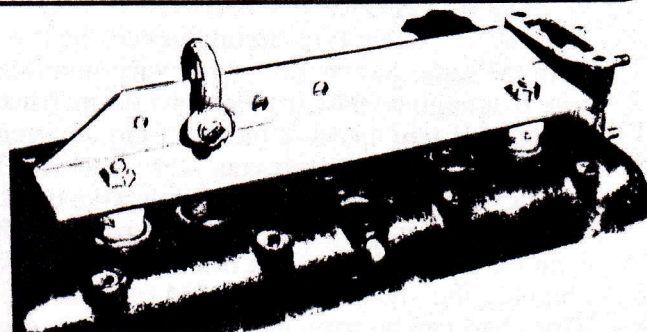


August 18th, 1991 • Oakville

In response to Bevan's letter to the Ford Motor Company of Canada for information on the Australian Model A to incorporate in the *History of the Model A Ford in Australia*, we apparently now have more information than Ford Australia. They also sent us four of these badges (as shown) printed in blue on aluminium. The fairest way to allocate these seems to be to have a draw of those interested. So, if you would like a chance at one, please advise Secretary HELEN and we will have a draw of those names only at the next meeting.

### ENGINE LIFT

Here's a little project that will not take a lot of skill. Made from a piece of 3/16-in x 1-1/2-in angle iron. This sample shows four separate lifting holes (for a shackle) to keep the engine level or tilted when removing or installing. Use two old spark plugs for fixing to the engine. Also makes a useful handle for lifting off the head.



# Drive your Model A in here for some advice from Lyle Meek, MAFCA's Technical Director, to help you along!

## REVERSE CLUTCH CHATTER

*Advice to a member who had installed a new clutch plate which resulted in the clutch chattering only in reverse.*

"Your problem is not uncommon and is often just a Model A quirk - assuming that you have checked the surfaces of the flywheel, clutch disc and pressure plate for oil, dirt or grease. An uneven surface could also cause it to bind a little. One shady tree remedy would be to back your A up to a big tree or sturdy post, put it in reverse and let the clutch out. The resistance may glaze over the surface and eliminate the chatter (no guarantees)."

## OVERLAP

*Explanation for that unique Model A "chug" running sound in response to a member who observed the following valve opening/closing sequence while assembling the engine on his '30 Tudor:*

(1) The exhaust valves begin to open before the pistons reach the bottom of the firing stroke. (2) the intake valves do not close until the pistons travel about 7/8 of an inch upward on the compression stroke. I am wondering why the exhaust valves open so soon and why the intake valves close so late. Is this called overlap? "Yes."

## CAN YOU REMEMBER WHICH WAY TO MOVE YOUR GENERATOR BRUSH?

Aubrey Hall from Texas, says if you are having trouble remembering which way to move the brush in your generator to increase or decrease your charging rate, just remember this:- "UP is DOWN and DOWN is UP." Move the brush down to increase your charge rate and move it up to decrease the rate. *Back-to-front, as usual! Ed*

## RUST IN THE RADIATOR

*Advice offered by Lyle to a Member who was having trouble with rust in the cooling system.*

"Here is one possible solution:- drain your cooling system and flush it with plain water. Add 1/2 to 1 pint of water soluble oil (stalube), fill system with water (not well water). Drive 25-50 miles. Drain and flush (plain water). Use 1/2 Ethylene Glycol (antifreeze) and 1/2 water and a cup of water soluble oil (if desired). The oil may make the coolant milky-white. The use of chemical flushes IS NOT recommended. Remember this is ONE solution and it came from the local radiator shop".

## GAS TANK SANDBLASTING

Richard Richardson from New Mexico reminded that the reason for not sand blasting a fuel tank was not warping but explosion. He said that if you had sandblasted at night you would see that the metal lights up like a 4th of July sparkler. Plus static electricity adds to the chances of explosion.

## NO SPARKS

**After removing battery cable from the starter motor - slip a piece of hose over the exposed terminal. ALSO - Wrap some tape around a wrench when working on electrics to stop fireworks - sparks when the wrench grounds.**

## HOW DOES TYRE SIZE CONVERT TO ENGINE RPM PER MILE?

The larger the rear tyre circumference, the less engine RPM per mile. The outer circumference of tyres with the same size markings can vary significantly from one manufacturer to another. It is not always true that engine RPM per mile always increases as you go down in rim size. It depends on who made the tyre! If you measure the outer circumference of a rear tyre in inches and divide that number into  $5,280 \times 12$ ", it gives you your rear wheel RPM per mile. Multiply this figure by your ring gear/pinion ratio (3.78 in most cases) and you have determined your exact engine RPM per mile in high gear. Using linear graph paper, scale the paper so that this RPM and 60 MPH fall on the same spot on the x and y axis. Now draw a line through this spot from the zero coordinates. You now have a chart showing the precise engine RPM for your Model A while in high gear at any road speed 0-60 MPH. This chart can be particularly helpful when considering a different ring gear/pinion ratio or planning a conversion to overdrive.

## Further to Bill Bennie's article on the Bendigo Swap Meet:

# ONE MAN'S RUSTY CAR PART IS ANOTHER MAN'S RUSTY CAR PART

by Andrew Millar - from South Australia's "Model 'A' Torque"

This is sort of an attempt at writing a "Blow your own horn" article. It is only an attempt because, at this stage, I have very little to blow my own horn about. It has been two years since an uncle-in-law offered me the parts of a Model A as a restoration project. After all this time, all I have to show for my labour is something that looks like a glorified go-cart - all that's finished is four wheels, a frame, a couple of axles and a steering column.

Two things have held me up so far. Money (yes, a situation familiar to all of us). The second snag is one which is peculiar to those of us who are starting with a wheel nut and are building a car around it - lack of parts to work on. Both these restrictions come together in a situation I refer to as "Search and Destroy" - I search for parts and destroy the bank balance in the process.

Which leads me to the point of this story. It's amazing what some people think parts for a Model A are worth!

You see, I am writing this here in Ballarat, at the Swap Meet you've all ventured to at some stage. It's about 5 o'clock in the afternoon, I've had a shower and washed the rust and dirt off, and I'm thinking about the people I've encountered today. They fall into two distinct categories:-

Those who have attempted a restoration and have surplus parts they are attempting to rid themselves of, and those who wish to retire rich on the proceeds of the sale of a bonnet latch I want to buy. You've dealt with both types, I'm sure.

Take this as an example - I found a pair of pitted

but reasonably straight bonnet sills and enquired about the price. "Oh, mate, well you know..." I learned very early in the day that this is accompanied by a lot of head scratching and it's best walk away without waiting for the price. This is a classic sign of the "get rich quick" category. "Well, you should see the price they're charging in there for these." He stops scratching for a moment and points a dandruff-speckled finger toward the sheds where the importers have their stalls. "I'd have to have 50 bucks for them."

Now, let's think about this for a minute. I did see an imported pair on display for \$70. A pair that were new, perfect, primed and ready to paint. Then there is this second-hand pair that this Swap Meet equivalent of a one-armed bandit is offering me. They need around 4 - 5 hours work to get them any where near the standard of a new part. Even if you calculate your time out a half what a panel beater would charge, you end up by effectively paying around \$200 for them - if you value your own time that highly.

My point is that I have learned two lessons today:- Some parts are not worth restoring, and some people want too much for them.

Needless to say, the bonnet sills were still there when I left. I didn't have the heart, or the patience, to tell him that "East Coast" have them listed at \$55 a pair.

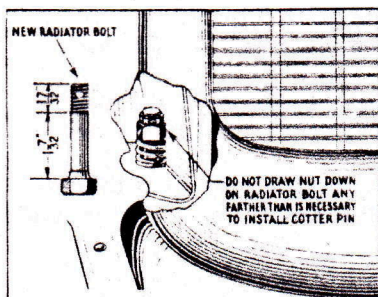
Still, it's like you need a winter to appreciate the summer, or a night to appreciate day - you need the expensive stalls to appreciate the bargains you can find at these meetings.

Think I'll have another beer. Happy scrounging.

## FOR SALE

from Victoria's "Ford Torque"

- \* NEW EXHAUSTS - complete unit for \$125 - Bill Mayberry, [REDACTED]
- \* 28-29 reproduction HUB CAPS \$50. DISTRIBUTOR assembly \$25.  
from Steven Field [REDACTED]
- \* "Coachwork Ford Geelong" replica BADGES for 1930 models  
from Nick Eglezos [REDACTED]
- \* CAST IRON BRAKE DRUMS all types in stock - \$145 each plus \$10 postage  
per pair. Technical enquiries to Keith Rawson [REDACTED]



**DO NOT DRAW RADIATOR BOLT NUTS DOWN TIGHTLY**  
When mounting a radiator, do not draw the radiator bolt nuts down any farther than is necessary to lock the nut with the cotter key. If these nuts are drawn down tightly it compresses the radiator to frame bolt springs to such an extent that the flexible feature of the springs is defeated and damage to the radiator invariably results. The threaded end of the radiator bolt was later reduced from 5/8-in to 17/32-in which makes it impossible to screw the nut down farther than the correct distance. However, care must still be exercised.

**RALLY HEAD QUARTERS  
IMMANUEL COLLEGE**

**PRESENTATION DINNER VENUE**

MODEL CLUB  
**Ford**  
SOUTH AUSTRALIA  
**13th NATIONAL  
MODEL "A"  
RALLY**  
March 31 - April 4  
1994

Welcome to  
**GLENELG**  
Adelaide's City by the Sea

**IF YOU ARE INTENDING TO ATTEND THE NATIONAL RALLY IN SOUTH AUSTRALIA  
YOU SHOULD BE THINKING VERY SERIOUSLY ABOUT RESERVING ACCOMMODATION.  
SECRETARY HELEN HAS DETAILS OF SOME HOTELS, MOTELS, ETC IN GLENELG.  
THE VENUE IS A VERY POPULAR EASTER TOURIST DESTINATION - SO ACT SOON!**

Betcha can't guess who wrote this - and when!

## A MOTOR COURTSHIP

Into her presence he gaily pranced,  
A very fat spark, and a bit advanced.

With a Samson tread on the earth he trod,  
He was stayed and gaitered, and fifty odd.

And she was a tulip just unfurled,  
The sweetest thing in the motor world.

Her body was one of which poets dreamed,  
Eighteen - twenty, or so she seemed.

Her air was haughty, her spirit proud,  
But properly governed, as all allowed.

"Pity," he said "my sad condition;  
My heart's in a state of advanced ignition.

"Ask me to do some desperate deed,  
And I'll do it at once at my topmost speed."

"Sir," said the maiden, "pray be seated;  
I fear from your bearing you're somewhat heated.

"And I trust that a timely lubrication  
Of throttle will cool your circulation."

As a well-made mixture she indicated,  
With joy and gladness he radiated.

"Oh, come," said she, "in this soft spring weather,  
Let us run over the world together."

But she slipped his clutch with a gesture mocking,  
"Your heart", she said, "I can hear it knocking.

"You haven't the gear at my pace to last;  
Both men and motors - I like them fast.

"And I think that in me you have missed your mission;  
You are only an old-style tube-ignition."

With a sidelong motion he left the place;  
For weal or woe he was off his base.

He drove his car to the cliffs of Dover,  
Made one short circuit and ran her over.

And the stormy Petrol her rest is taking,  
Where only the wild waves do the "brakeing".

Answer: BANJO PATERSON - published in the *Evening News*, 20 January, 1906.  
Isn't that abso-bleedin'-lutely amazing?

## . . . Notebook . . .

**HAPPY BIRTHDAY** this month to:- MAX ANNEAR, ROB KARRI-DAVIES, BARRIE GUEST, EDITH JEFFREE, TONY and RITA PARIN, LEIGH SMITH and MATTHEW READ.

**CONGRATULATIONS** to BARRY and SYLVIA BRISTOW-STAGG on a successful completion of the restoration on their '28 Phaeton. BARRY was showing the "baby photos" at the Dinner.

**FOR SALE** - 1928 Tudor/Utility. Complete (in pieces) with new parts. [REDACTED] after 5.30pm.

**INJURED** - the LAURIE family is in the wars again. Hurrying to get ready for the Christmas Dinner, JOHN was wielding an axe to chop some wood when the implement developed a mind of its own and attacked his thumb - letting the air in from nail to knuckle!! Both JOHN and PAT are recovering from their respective hospital visits.

**RADIATOR** - If you know the part number of the Fiat tractor core for a Model A radiator please advise MALCOLM WOOD on [REDACTED] as soon as possible.

**MODEL A TIMBER** - MALCOLM WOOD has been working on the timber for his '29 Phaeton and found a new timber instead of the traditional Tasmanian Oak which is called DURIAN - apparently a Malaysian fruit tree. Bunnings recommended this timber and MALCOLM has found it ideal for the job - he says you can't tell the difference, apart from the much cheaper price.

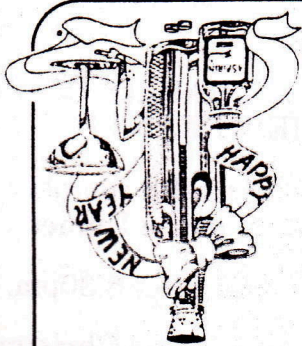
**"Four-wheeled pioneers"** - *The West Australian* have offered us the opportunity to purchase this book on "How the motor car won the West" at a reduced price. This 70 page paperback features well over a hundred black and white photos from their archives to produce a pictorial chronicle of the evolution of the motor car in our State. Usual retail price is \$5.95 - the offer for a minimum purchase of 6 copies is \$4.50 per copy, plus \$5.00 total postage (the more ordered, the less the postage per copy). Contact Secretary HELEN if you would like a copy and she will collate the orders and advise the cost with postage. For all lovers of old cars, and W.A. history.

### **"REGISTERED" REPAIRERS**

Your Secretary gets calls from members requesting names of trades people to work on their restoration. People such as: upholsterers, engine re-conditioners, wheel straighteners, and so on... If we compile a list of people and businesses that have been used by Club members those details can be passed onto other members without them having to gamble with the restoration of their Model A. Some Clubs in America include a list of repairers/restorers in their Club Register - we would not need to go that far but it would be VERY handy for the Secretary (and Club Librarian ANGELO) to have such a list. There are still over 50 unrestored Model A Fords out there belonging to just our present Club members. Our Constitution states that this Club: encourages members to restore the Model A Ford and to provide technical information - the Club needs the above information to fulfil this stated objective. Please give this matter some thought and advise of any relevant trades people you have used and can recommend.

**RETIRED? Time on your hands?** - If you have particular technical, managerial or professional skills and have the opportunity to pass your expertise onto needy businesses in under-developed countries - basically the South Pacific - you can register with the Australian Executive Service Overseas Program. Live in a new country for a month or so and gain great personal satisfaction through passing your knowledge onto needy people. Contact AESOP direct for information or to register, at [REDACTED] Queen Victoria Terrace, ACT 2600, or Bevan has full details.

**ALUMINIUM CANS** - wanted by JORDAN COOKE who belongs to the 1st Lake Goollelal Scout Group. The Group will be attempting to sponsor 20 boys at a cost of approx \$300 each to attend the 17th Australian Jamboree to be held at Perry Lakes over Christmas, 1994/5. If you would care to contribute spare cans, please bring them along to each meeting. It will be very much appreciated by JORDAN and the Group - thank you.



If undelivered, please return to:  
Palmyna [REDACTED]  
Western Australia, 6157

NORANDA 6062

PAISLEY Ian and Dianne

**Western  
Model A News**

CORRECT ADDRESS  
SAVES US  
GUESSING



## WATERPROOFING FABRIC CAR TOPS

*Veteran and Classic Car Club, Ballarat, Victoria*

If the fabric top on your car leaks due to small cracks in it but the top is still stretched tightly and is not torn, you can still waterproof and preserve it with paraffin. First clean the material thoroughly with a stiff brush to remove loose dirt and grit and keep in a warm place. Then melt a pint of paraffin and brush this on. After the paraffin has soaked in, move the car to a cool spot and, when the paraffin hardens, give the top a coat of regular dressing. In this way, the paraffin fills up the tiny cracks and softens the material, providing a good surface for top dressing to complete the treatment. One application will last several months.

## COLOURING FADED PLASTIC TAIL LIGHT LENSES

Prolonged exposure to sun and weather sometimes bleaches plastic tail light lenses and dulls their surface, resulting in a loss of colour when turned on and detracting from the appearance of the lens during daytime. To restore the lens to a bright, safe red, coat it with red finger nail polish. If the surface of the lens is rough, first smooth it with fine sandpaper. Then, thin the polish with acetone and apply a light coat to the lens with long, fast strokes of the brush to attain a transparent coating. It is best to do this with the tail lights turned on so the polish can be applied as evenly as possible.

## THE PERFECT EXPLANATION

Five South African insurance companies - Legal & General, Mutual Trust, Employee's Liability, Commercial Union and African Life - agreed to amalgamate.

They agreed to build a palatial block of offices and engaged an artist to design and construct a huge panel for the lobby of the new building.

On opening day when the Mayor unveiled the panel everyone was amazed and horrified to discover that it depicted five men in bed with five women. The artist was immediately asked for an explanation. This is what he told the Mayor:-

"The first man is in bed with his wife - that's legal and general.

The second man is in bed with his fiancée - that's mutual trust.

The third man is in bed with his typist - that's employees' liability.

The fourth man is in bed with a lady of easy virtue - that's commercial union.

The fifth man is in bed with a native - that's African life."



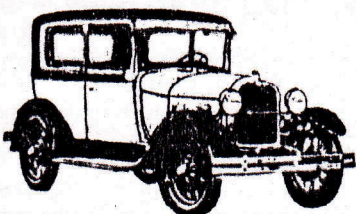
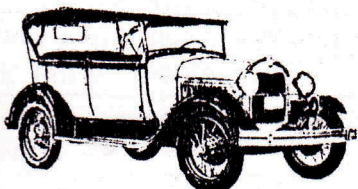
WHITTINGTON Edward SEABROOK, 6401		'30 Phaeton
WILLIAMS Jim & Nina McNabb Loop, COMO, 6152		'29 Phaeton * '29 Woodie Station Wagon *
WILSON Rex & May NORTHAM, 6401		'30 Town sedan
WOJDYLO Joe & Elizabeth KENWICK, 6107		
WOOD Malcolm & Pauline DUNCRAIG, 6023		'29 Phaeton
WRIGHT Rodney & Suzanne ORANGE GROVE, 6109		'30 Roadster
WRINGE Chris YOKINE, 6060		'29 Phaeton '29 Special Coupe



## Model A Restorers Club of Western Australia, Inc

# REGISTER OF MEMBERS AND VEHICLES 1992 - 93

OFFICE BEARERS: - *President:* LAUREL COOKE. *Vice-President:* ANGELO CALLEJA.  
*Secretary/Treasurer:* HELEN SHARP. *Editor:* BEVAN SHARP.  
*Chief Vehicle Examiner:* STEVE READ. *Vehicle Examiners:* REG BLEWETT, MAX ANNEAR.  
*Committee:* L. COOKE, A. CALLEJA, H. SHARP, B. SHARP, S. READ, JIM WILLIAMS.



*Secretary:*  
██████████ Palmyra  
Western Australia, 6157

Family Memberships - 86 (inc 31 country, I/state, O/seas)			
MODEL A FORDS (WA only)		*	Total
Body type	Unrestored	Restored	
Phaeton	19	23	42
Roadster	10	9	19
Tudor	8	9	17
Truck	4	3	7
Coupe	1	7	8
Utility	10	5	15
Fordor/Town	3	1	4
Station Wagon	-	1	1
<b>TOTALS:</b>	<b>55</b>	<b>58</b>	<b>113</b>

ADDISON Des & Marg [REDACTED] BRUCE ROCK, 6418	'30 Utility *
ANDREWS Ron & Gail [REDACTED] ARMADALE, 6112	'28 Phaeton * '29 Utility
NEAR Max & Dora [REDACTED] NORTH BEACH, 6020	'30 Roadster *
BARENDSE Lionel & Mavis [REDACTED] COMO, 6152	'28 Phaeton
BARRY Tom [REDACTED] BOULDER, 6432	'28 Utility
BELL Michael & Irene [REDACTED] CAPEL, 6271	'30 Phaeton
BENNIE Bill & Dorothy [REDACTED] KALAMUNDA 6076	'28 Phaeton * '30 Deluxe Roadster
BLACKLOCK Lindsay & Wendy [REDACTED] MADORA, 6211	'30 Phaeton *
BLEWETT David & Barbara [REDACTED] BATEMAN, 6155	'31 5-Window *
BLEWETT Reg & Coral [REDACTED] EAST VICTORIA PARK, 6101	'28 Tudor * '28 Utility * '30 Phaeton * '29 Utility
brANDIS Russell [REDACTED] MUKINBUDIN, 6479	'28 Truck
BRISTOW-STAGG Barry & Sylvia [REDACTED] NORTHAM, 6401	'28 Phaeton *
BROWN Ken & Denise [REDACTED] HELENA VALLEY, 6056	'28 Phaeton * '28 Truck '28 Tudor
RICHARDS Jeannane [REDACTED] GOOSEBERRY HILL, 6076	'28 Tudor *
ROY John & Margaret [REDACTED] RAVENSTHORPE, 6346	'28 Tudor '30 Roadster, '30 Truck
SHARP Bevan & Helen [REDACTED] EAST FREMANTLE, 6158	'29 Tudor *
CLAIR Frank [REDACTED] DAMPIER, 6713	'28 Phaeton
SMITH Alan & June [REDACTED] MARMION, 6020	'28 Tudor *
SMITH Paul & Leigh [REDACTED] GLENFIELD, Auckland, New Zealand	'30 Roadster * '30 AA Truck * '30 Town Sedan *, '30 Delivery
SNELGAR Terry & Lyn [REDACTED] KEWDALE, 6105	'29 Phaeton
SPENCER Mavis [REDACTED] BUSSELTON, 6280	
STATHY Michael & Doreen [REDACTED] FORRESTFIELD, 6058	
STITT Ray & Caroline [REDACTED] BATEMAN, 6150	
SWAN BREWERY Coy Ltd - TREVOR WRIGHT [REDACTED] PERTH, 6001	'29 Truck *
TEALE John & Margret [REDACTED] BUSSELTON, 6280	'28 Tudor * '28 Phaeton '29 Truck, '29 Roadster
TEALE Robert & Debbie [REDACTED] BUSSELTON, 6280	'29 Roadster Pick-up * '30 Town Sedan

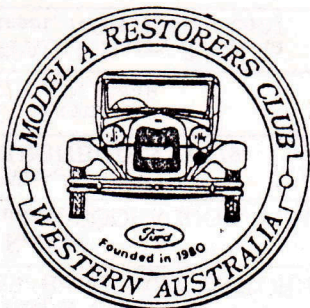
EASTOUGH Tom & Crispina [REDACTED] NOLLAMARA, 6061		'30 Utility * '29 Utility '30 Phaeton *
EVA Gary [REDACTED] BROOKTON, 6306		'29 Phaeton
FOGLIANI Frank & Alexis [REDACTED] CARINE, 6020		'28 Phaeton *
GREENFIELD Kym [REDACTED] PORT PIRIE, SA, 5540		'29 Roadster *
GROWNS Fred & Hazel [REDACTED] MEDINA, 6167		'30 Roadster
GUEST Barrie & Gwen [REDACTED] WILLETTON, 6155		'29 Phaeton *
HEARD Dave & Sonia [REDACTED] FORRESTFIELD, 6058		'29 Phaeton
HUCKSTEPP Ron & Gail [REDACTED] PENNANT HILLS. NSW 2120		'28 Phaeton *
INGRAM Geoff & Lindy [REDACTED] DAMPIER, 6713		'30 Tudor '28 Phaeton
JEFFREE Alan, Edith & Darren [REDACTED] DIANELLA, 6062		'28 Phaeton * '28 Phaeton *
JENNINGS Bruce & Sue [REDACTED] LESMURDIE, 6076		'30 Roadster *
KARRI-DAVIES Rob & Karen [REDACTED] SOUTH PERTH, 6151		'28 Roadster *
KENDALL Charles & Shena [REDACTED] ESPERANCE, 6450		'28 Roadster
KIRKWOOD, Alex & Linda [REDACTED] PARMELIA, 6167		'28 Phaeton *
KITCHENS Mick & Nina [REDACTED] GLEN FORREST, 6071		'28 Phaeton
KRIKKE Peter & Julie [REDACTED] BUNBURY, 6230		'31 5-Window Coupe *
LAURIE John & Patricia [REDACTED] GIDGEGANNUP, 6555		'29 Roadster
LITCH Ross & Alma [REDACTED] DUNCRAIG, 6023		'29 Roadster * '28 Utility
LUCA John & Fil [REDACTED] KINGSLEY, 6026		'29 Tudor *
LUCAS David & Ruth [REDACTED] Great Eastern Highway, NORTHAM, 6401		'28 Tudor '28 Utility
LYNCH Peter & Faye [REDACTED] GREENWOOD, 6024		'31 5-Window Coupe *
MAHONY Ray & Toni [REDACTED] BEDFORD, 6052		'29 Phaeton * '28 Utility
MARTIN Beth [REDACTED] SEFTON PARK, SA, 5083		'28 Phaeton *
MATTHEWS W.T. [REDACTED] CORRIGIN, 6375		'28 Phaeton *
McLAREN David & Nicola [REDACTED] KALAMUNDA, 6076		
McLEAN John & Ivy [REDACTED] DUNCRAIG, 6023		'29 Roadster *
NETHERWAY Douglas & Sandra [REDACTED] GOSNELLS, 6110		'28 Phaeton *

OLIVER Mick & Marilyn [REDACTED] GELORUP, 6230	'29 Tudor
PAISLEY Ian & Dianne [REDACTED] NORANDA, 6062	'30 Roadster
NZICH Dale & Doreen [REDACTED] LEEMING, 6155	'28 Phaeton
PARIN Tony & Rita [REDACTED] WANNEROO, 6065	'30 Coupe *
PEPPER Kelvin & Kath [REDACTED] MARIGINIUP, 6065	'28 Truck * '28 Tudor x 2 '29 Phaeton, '28 Utility
PHILP Don & Vi [REDACTED] NEDLANDS, 6009	'29 Roadster *
PINNINGTON Daniel [REDACTED] KALAMUNDA, 6076	'28 Phaeton
PLEYSIER Ron [REDACTED] KELMSCOTT, 6111	'30 Tudor '28 Utility
POLLEY Alex & Lesley [REDACTED] MANJIMUP, 6258	'30 Roadster
PRINGLE Geoff & Janie [REDACTED] MANDURAH, 6210	'29 Phaeton * '30 Roadster *
QUINN Douglas & Christine [REDACTED] WANNEROO, 6065	'29 Phaeton *
RACCUA Phillip [REDACTED] MORLEY, 6062	'28 Coupe *
READ Steve & Louise [REDACTED] THORNIE, 6108	'28 Tudor * '29 Roadster *
CALLEJA Angelo & Judy [REDACTED] ALEXANDER HEIGHTS, 6064	'30 Phaeton * '28 Roadster '30 Town Sedan
CALLOW Mervyn & Thelma [REDACTED] GOOSEBERRY HILL, 6076	'28 Phaeton *
CARTER John & Brenda [REDACTED] HILTON, 6163	'28 Coupe * '30 Coupe *
CAMBERLAIN Ross [REDACTED] SHELLEY, 6155	'30 Truck * '30 Phaeton
CHAMBERS David [REDACTED] KONDININ, 6367	'28 Phaeton
CHRISTIE Alec [REDACTED] CADOUX, 6466	'28 Utility
COOKE Michael & Laurel [REDACTED] KINGSLEY, 6026	'28 Phaeton * '28 Tudor *
COWLIN Bill & Valerie [REDACTED] Fifty Road, BALDIVIS, 6171	'28 Roadster * '29 Tudor *
CREEDY Maurice & Maxine [REDACTED] HAZELWOOD PARK, SA, 5066	'28 Phaeton * '28 Woody Station Wagon
DAVIDSON Colin & Maxine [REDACTED] Ruwi, Muscat, Sultanate of OMAN	'29 Phaeton * '30 5-Window *
DEMIRIS Jim & Zorica [REDACTED] NORANDA, 6062	'28 Phaeton '28 Phaeton
DOW Peter & Janice [REDACTED] RAVENSTHORPE, 6346	'29 Utility *
DUNN Alan & Gail [REDACTED] MANJIMUP, 6258	'29 Phaeton *

EVA Gary [REDACTED] BROOKTON, 6306		'29 Phaeton
FARRELLY Frank & Barbara [REDACTED] TRIGG, 6029		
BOGLIANI Frank & Alexis [REDACTED] CARINE, 6020		'28 Phaeton *
GILBERTHORPE Peter & Elaine [REDACTED] ASHFIELD, 6054		'30 Phaeton *
GREENFIELD Kym [REDACTED] PORT PIRIE, SA, 5540		'29 Roadster *
GUEST Barrie & Gwen [REDACTED] WILLETTON, 6155		'29 Phaeton *
HALL John & Shirley [REDACTED] SALTER POINT, 6152		'30 Roadster *
HEARD Dave & Sonia [REDACTED] FORRESTFIELD, 6058		'29 Phaeton
INGRAM Geoff & Lindy [REDACTED] DAMPIER, 6713		'30 Tudor, '29 Roadster '28 Phaeton
JEFFREE Alan & Edith [REDACTED] DIANELLA, 6062		'28 Phaeton *
JEFFREE Darren & WRINGE Germaine [REDACTED] DIANELLA, 6162		'28 Phaeton * '29 Sports Coupe
KARRI-DAVIES Rob & Karen [REDACTED] EAST FREMANTLE, 6158		'28 Roadster *
TENDALL Charles & Shena [REDACTED] ESPERANCE, 6450		'28 Roadster
KIRKWOOD, Alex & Linda [REDACTED] PARMELIA, 6167		'28 Phaeton *
KITCHENS Mick & Nina [REDACTED] GLEN FORREST, 6071		'28 Phaeton
KRIKKE Peter & Julie [REDACTED] BUNBURY, 6230		'31 5-Window Coupe *
LAURIE John & Patricia [REDACTED] GIDGEGANNUP, 6555		'29 Roadster
LETCH Ross & Alma [REDACTED] Wanneroo, 6065		'29 Roadster * '28 Utility
LUCA John & Fil [REDACTED] KINGSLEY, 6026		'29 Tudor *
LUCAS David & Ruth [REDACTED] Great Eastern Highway, NORTHAM, 6401		'28 Tudor '28 Utility
LYNCH Peter & Faye [REDACTED] GREENWOOD, 6024		'31 5-Window Coupe * '28-'29 Speedster
MAHONY Ray & Toni [REDACTED] BEDFORD, 6052		'29 Phaeton * '28 Utility
MARTI Chris & Susan [REDACTED] EAST FREMANTLE, 6158		'29 Roadster
MARTIN Beth [REDACTED] SEFTON PARK, SA, 5083		'28 Phaeton *
MATTHEWS W.T. [REDACTED] CORRIGIN, 6375		'28 Phaeton *
McLEAN John & Ivy [REDACTED] DUNCRAIG, 6023		'29 Roadster *
MOODY Richard & Pamela [REDACTED] KINGSLEY, 6026		'30 Phaeton *
NETHERWAY Douglas & Sandra [REDACTED] GOSNELLS, 6110		'28 Phaeton *
OLIVER Mick & Marilyn [REDACTED] GELORUP, 6230		'29 Tudor
PAISLEY Ian & Dianne [REDACTED] NORANDA, 6062		'30 Roadster
PARIN Tony & Rita [REDACTED] WANNEROO, 6065		'30 Coupe *
PENN Mel & Betsy [REDACTED] MOSMAN PARK, 6012		
PEPPER Kelvin & Kath [REDACTED] MARIGINIUP, 6065		'28 Truck * '28 Tudor x 2 '29 Phaeton. '28 Utility

PERRY Ron & Jennifer [REDACTED] MUNDARING, 6073	'30 5-Window Coupe *
PHILP Don & Vi [REDACTED] NEDLANDS, 6009	'29 Roadster *
PINNINGTON Daniel [REDACTED] KALAMUNDA, 6076	'28 Phaeton
PLEYSIER Ron [REDACTED] KELMSCOTT, 6111	'30 Tudor '28 Utility
POLLEY Alex & Lesley [REDACTED] MANJIMUP, 6258	'30 Roadster
PRINGLE Geoff & Janie [REDACTED] MANDURAH, 6210	'29 Phaeton *
QUINN Douglas & Christine [REDACTED] WANNEROO, 6065	'29 Phaeton *
RACCUJA Phillip [REDACTED] MORLEY, 6062	'28 Coupe *
READ Steve & Louise [REDACTED] THORNLIE, 6108	'28 Tudor * '29 Roadster *
RICHARDS Jeannane [REDACTED] GOOSEBERRY HILL, 6076	'28 Tudor *
ROY John & Margaret [REDACTED] RAVENSTHORPE, 6346	'28 Tudor '30 Roadster. '30 Truck
SCAFIDI Robert & Jenny [REDACTED] ARMADALE, 6112	'29 Utility
HARP Bevan & Helen [REDACTED] EAST FREMANTLE, 6158	'29 Tudor *
SINCLAIR Frank [REDACTED] DAMPIER, 6713	'28 Phaeton
SMITH Alan & June [REDACTED] MARMION, 6020	'28 Tudor *
SMITH Paul & Leigh [REDACTED] GLENFIELD, Auckland, New Zealand	'30 Roadster * '30 AA Truck * '30 Town Sedan *. '30 S. Deliver
SNELGAR Terry & Lyn [REDACTED] KEWDALE, 6105	'29 Phaeton
BUSSARD David & Patricia [REDACTED] APPLECROSS, 6153	'28 Roadster
CALLEJA Angelo & Judy [REDACTED] ALEXANDER HEIGHTS, 6064	'30 Phaeton * '28 Roadster '30 Town Sedan
CALLOW Mervyn & Thelma [REDACTED] GOOSEBERRY HILL, 6076	'28 Phaeton *
CARTER John & Brenda [REDACTED] HILTON, 6163	'28 Coupe *
HAMBERLAIN Ross & Lorraine [REDACTED] SHELLEY, 6155	'30 Truck * '30 Phaeton
CHAMBERS David [REDACTED] KONDININ, 6367	'28 Phaeton
CHRISTIE Alec [REDACTED] CADOUX, 6466	'28 Utility *
COOKE Michael & Laurel [REDACTED] KINGSLEY, 6026	'28 Tudor *
COWLIN Bill & Valerie [REDACTED] BALDIVIS, 6171	'28 Roadster * '29 Tudor *
CREEDY Maurice & Maxine [REDACTED] HAZELWOOD PARK, SA, 5066	'28 Phaeton * '28 Woodv Station Wagon *
DAVIDSON Colin & Maxine [REDACTED] Ruwi, Muscat, Sultinate of OMAN	'29 Phaeton * '30 5-Window *
DEMIRIS Jim & Zorica [REDACTED] NORANDA, 6062	'28 Phaeton '28 Phaeton
DOW Peter & Janice [REDACTED] RAVENSTHORPE, 6346	'29 Utility *
DUNS Alan & Gail [REDACTED] MANJIMUP, 6258	'29 Phaeton *
EASTOUGH Tom & Crispina [REDACTED] NOLLAMARA, 6061	'30 Utility *, '29 Utility '30 Phaeton *
EDWARDS Hartley & Pauline [REDACTED] BULLCREEK, 6149	

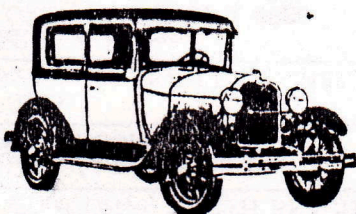
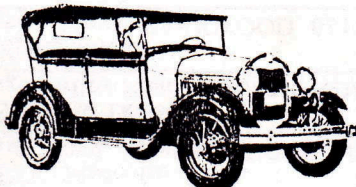
ADDISON Des & Marg BRUCE ROCK, 6418	'30 Utility *
ANDREWS Ron & Gail ARMADALE, 6112	'28 Phaeton * '29 Utility
ANNEAR Max & Dora NORTH BEACH, 6020	'30 Roadster *
ARENDSE Lionel & Mavis COMO, 6152	'28 Phaeton
BARRY Tom BOULDER, 6432	'28 Utility
BELL Michael & Irene WATERLOO, 6228	'30 Phaeton
BELLETTTE Malcolm AUCKLAND, New Zealand	'28 Pickup * '29 Fordor *
BENNIE Bill & Dorothy KALAMUNDA 6076	'28 Phaeton * '30 Deluxe Roadster
BERKSHIRE Jack PARKWOOD, 6147	'29 Phaeton *
BLACKLOCK Lindsay & Wendy MADORA, 6211	'30 Phaeton *
BLEWETT David & Barbara BATEMAN, 6155	'31 5-Window *
BLEWETT Reg & Coral EAST VICTORIA PARK, 6101	'28 Tudor * '28 Utility * '30 Phaeton * '29 Utility
BLEWETT Robert BOORAGOON, 6154	
BRANDIS Russell MUKINBUDIN, 6479	'28 Truck
BRENNAND Wayne GIBSON, 6448	'29 Truck *
BRISTOW-STAGG Barry & Sylvia NORTHAM, 6401	'28 Phaeton *
BROWN Ken & Denise HELENA VALLEY, 6056	'28 Phaeton * '28 Truck '28 Tudor
SPENCER Mavis 60 Kalinda Drive, CITY BEACH, 6015	
STATHY Michael & Doreen FORRESTFIELD, 6058	'28 Phaeton
STITT Ray & Caroline BATEMAN, 6150	
SWAN BREWERY Coy Ltd - Keith Upton PERTH, 6001	'30 Truck *
SYDNEY-SMITH Brian BUNBURY, 6230	'29 Phaeton
TEALE John & Margret BUSSELTON, 6280	'28 Tudor * '28 Phaeton '29 Truck. '29 Roadster
TEALE Robert & Debbie BUSSELTON, 6280	'29 Roadster Pick-up * '30 Town Sedan
TIMMINGS John & Francis CITY BEACH, 6015	
WHITTINGTON Edward NORTHAM, 6401	'30 Phaeton *
WILLIAMS Jim & Nina McNabb Loop, COMO, 6152	'29 Woodie Station Wagon *
WILSON Rex & May NORTHAM, 6401	'30 Town Sedan
WOJDYLO Joe & Elizabeth KENWICK, 6107	
WOOD Malcolm & Pauline DUNCRAIG, 6023	'29 Phaeton
WRIGHT Rodney & Suzanne ORANGE GROVE, 6109	'30 Roadster
INGE Chris GERALDTON, 6530	'29 Phaeton '29 Special Coupe



## Model A Restorers Club of Western Australia, Inc

# REGISTER OF MEMBERS AND VEHICLES 1993 - 94

OFFICE BEARERS:- *President:* ANGELO CALLEJA. *Vice-President:* BEVAN SHARP  
*Secretary/Treasurer:* RAY MAHONY. *Editor:* BEVAN SHARP. *Marshall:* MAX ANNEAR.  
*Chief Vehicle Examiner:* STEVE READ. *Vehicle Examiners:* REG BLEWETT, MAX ANNEAR.  
*Committee:* A. CALLEJA, B. SHARP, R. MAHONY, S. READ, J. BERKSHIRE, D. JEFFREE



*Secretary/Treasurer*

Bedford, 6052

Family Memberships - 98 (inc 31 country, I/state, O/seas)

MODEL A FORDS (WA only)		*	
Body type	Unrestored	Restored	Total
Phaeton	20	26	46
Roadster	9	10	19
Tudor	10	7	17
Truck	3	4	7
Coupe	2	7	9
Utility	12	7	19
Fordor/Town	3	2	5
Station Wagon	-	1	1
Speedster	1	-	1
<b>TOTALS:</b>	<b>60</b>	<b>64</b>	<b>124</b>