



2014

Hillcrest Primary School

ANNUAL REPORT



Dan Bralich
PRINCIPAL

Our School Report

The systemic challenges faced in 2014 were smoothly implemented and our school is well prepared for the increased autonomy, flexibilities and opportunities provided with the commencement of the Student Centred Funding model in 2015.

Welcome to the 2014 Hillcrest Primary School Annual Report. Each year all government schools are required to prepare a summary of the schools achievement, performance and directions over the year. This document provides part of the formal school reporting process to the school community.

Further analysis of data, the pursuit of targets in key strategic areas and use of staff, parent and community feedback have contributed to a refined planning cycle.

I am confident that after reading this report you will agree that 2014 was an extremely successful year for our school.

Ongoing development of distributed leadership across the school, quality teaching and learning and the continuing partnerships between parents, P&C, School Council and the wider community will ensure we remain committed to our focus of ensuring *'every student is a successful student'*.

Dan Bralich
Principal



Our School Vision



Hillcrest Primary School together with our wider community creates a positive learning environment where diversity is celebrated, excellence is encouraged and all students strive to reach their academic, social, physical and creative potential.

Our School Community

The Hillcrest Parent and Citizens Committee

This group of individuals and many other friends, family and supporters have done a magnificent job this year in helping bring amazing learning experiences to our students.



The 2014 school year was a momentous one for our school community.

Funded class vegetable patches

Provided uniform supplies

Hosted school banking

Supplemented whole school incursions and excursions

A year of celebrations for great achievement, recognition of educational excellence and significant building upgrade announcements.

The impact of our parent volunteers cannot be understated as is evident in this year's incredible accomplishments:

Coached netball premiership teams

and

Conducted Active-Afterschool sport sessions...

Purchased permanent and transportable shade structures

Installed sound system in undercover area

Organised a spectacular fete

Hosted Mother's day high tea

Father's day breakfast

ICSEA 1011

Halloween Disco

ADIDAS Fun Run



Appointment of a 0.2 FTE Community Liaison Officer to assist Principal manage

Revegetated and maintained Drake street verge

Sponsored classroom activities

Planted an instant orchard

Purchased trestle tables

Need we say more...

A very special school community...

Community Use of Facilities contracts.

Managed canteen services

Thank you all...

Audited and implemented sustainable energy and water practices (saving thousands of \$\$\$'s)

Our School Purpose

Through co-operation and participation we will create an environment in which children have the opportunity to develop their potential to the fullest in educational, social, physical and creative abilities and acquire the skills to assert them in their next stage of development.



Our School Enrolments

Our Kindergarten hosted Pre-Primary for the first time with all three centres providing composite Kindy and Pre-Primary lessons.

Current trends in the Early years should accommodate the opening of a third kindergarten class in 2015.



This initiative catered for the increased enrolments request in the early years.

11% Indigenous Students

13% Language background other than English

Seven students identified with Special Educational Needs

Student number trends				
Semester One	2011	2012	2013	2014
Primary (Excluding Kindy)	380	399	377	372

Our School Attendance

Attendance is a whole school initiative with regular tracking of students at risk, ongoing communication with parents and incentives for regular attendance.

	Non- Aboriginal			Aboriginal			Total		
	School	Like Schools	WA Public Schools	School	Like Schools	WA Public Schools	School	Like Schools	WA Public Schools
2012	94.6	94	93.3	86.4	88.1	81.1	93.9	94	92.3
2013	93.6	94.1	93.7	76.7	89.8	80.7	92.1	94	92.6
2014	93.5	93.1	93.2	80.5	83.2	80.4	92.2	92.6	92.1

Hillcrest Primary School utilised the services of the North Metropolitan Regional Attendance Panel for the first time in 2014 to address the Severe attendance cases.

	Attendance Category			
	Regular	At Risk		
		Indicated	Moderate	Severe
2012	80.7%	12.6%	5.7%	0.9%
2013	76.1%	14.5%	6.0%	3.2%
2014	77.0%	14.7%	4.9%	3.3%
WA Public Schools	75.0%	17.0%	6.0%	2.0%

	Attendance Category Aboriginal			
	Regular	Indicated	Moderate	Severe
2013	41.6%	19.4%	11.1%	27.7%
2014	43.4%	19.5%	15.2%	21.7%
WA Public Schools	40.0%	24.0%	21.0%	15.0%
	41.6%	19.4%	11.1%	27.7%

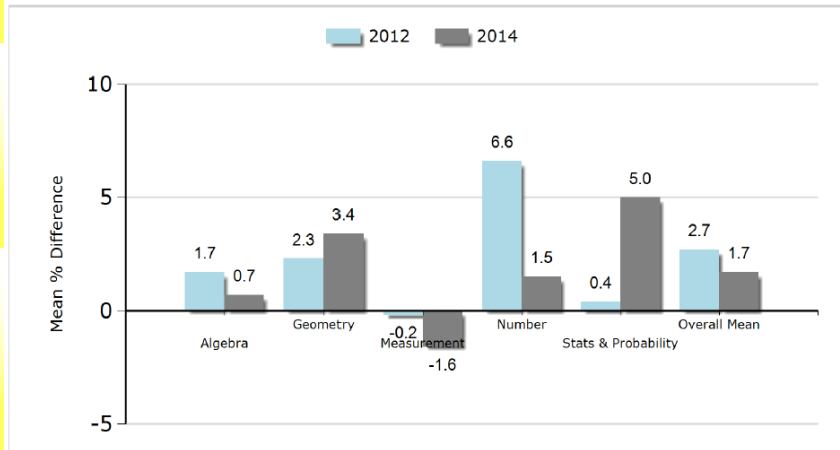
Our School Performance

ACADEMIC EXCELLENCE

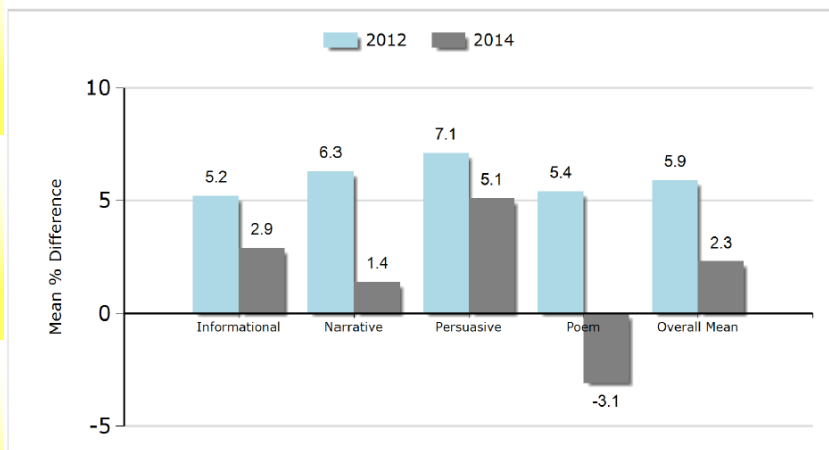
NAPLAN

- Stable Cohort Longitudinal 2012 Year 3 to 2014 Year 5

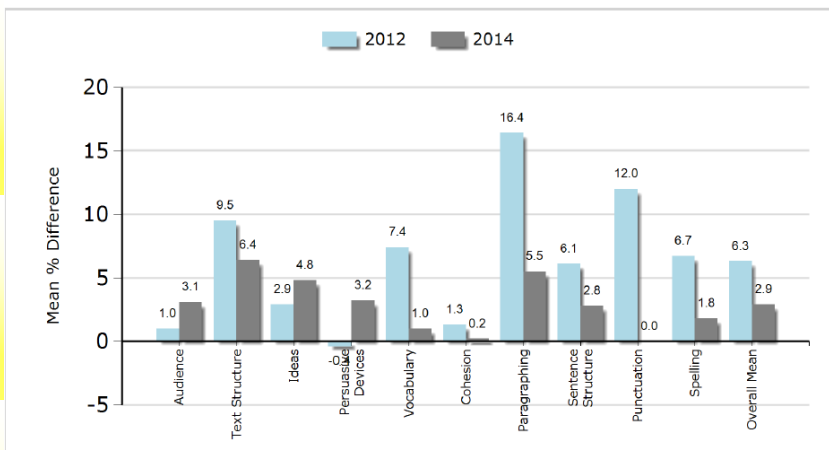
Numeracy (Against Australian Means)



Reading (Against Australian Means)



Writing (Against Australian Means)



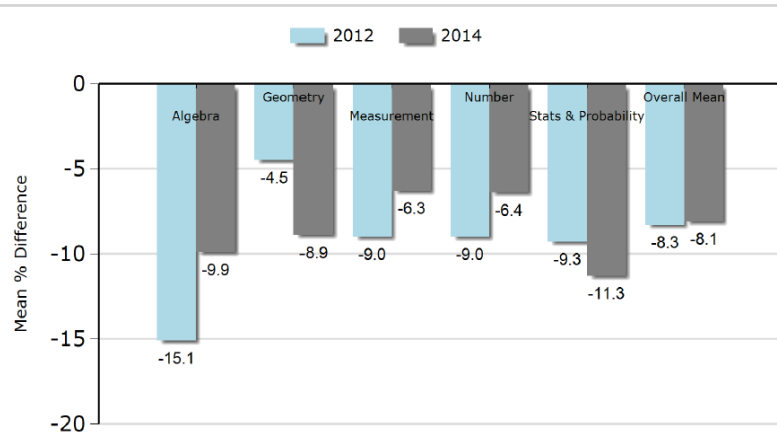
Our School Performance

ACADEMIC EXCELLENCE

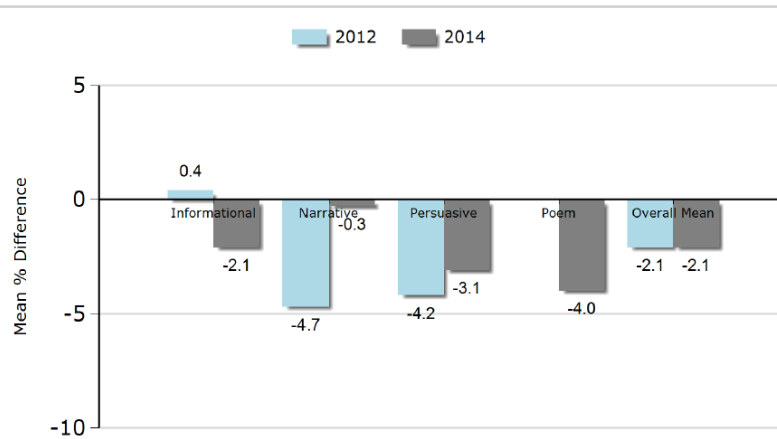
NAPLAN

- Stable Cohort Longitudinal 2012 Year 5 to 2014 Year 7

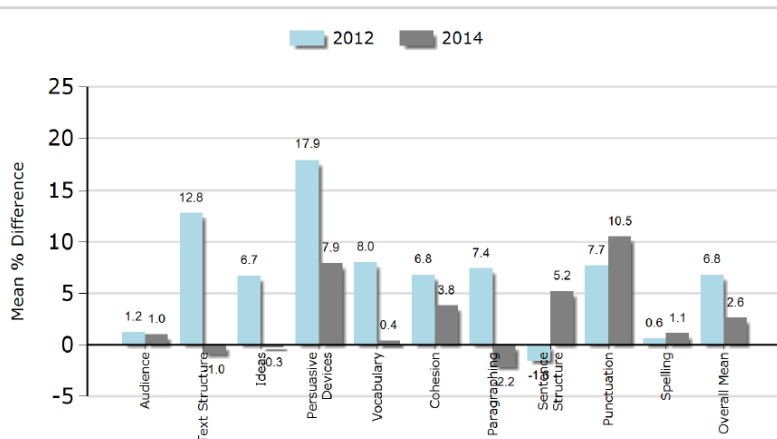
Numeracy (Against Australian Means)



Reading (Against Australian Means)



Writing (Against Australian Means)



Our School Programs

HIGH QUALITY TEACHING AND LEADERSHIP

Implementation of Australian Curriculum

National Quality Standard

SCSA trials

On Entry Assessment

NAPLAN

Talented and Gifted Program

Regional PEAC program

Focus

Intervention Team

Special Educational Needs

Reporting

Individual Case management

Phase of Development Teams

Learning Support Team

Mindfulness



'The Hillcrest Way' Whole School Approaches

- Early Childhood Education (ECE)
- Lesson Instruction (ISTAR)
- Literacy (Jolly Phonics)
- Numeracy
- Behaviour Management (PBS)
- Students At Educational Risk (SAER)
- Collaboration (POD's)
- Higher Order Thinking Skills (HOTS)

Curriculum Leaders

- Literacy
- Numeracy
- Behaviour Management
- Students At Educational Risk
- ATAS Support

Specialist Programs

- Visual Arts
- Physical Education
- Japanese LOTE
- Music

Commitment to Improvement

- A focus on analysis and identification of students with limited value adding
- Focus Intervention Team and Talented and Gifted Support Program to provide extension of high performing students
- Extension of looping initiative across NAPLAN years in 2015

Hillcrest S.T.A.R.R. is the inspiring acronym our school has developed to remind us of the behaviours and expectations of everyone who attends Hillcrest Primary School. S.T.A.R.R. reminds us about the need to ensure Safety, Teamwork, Achievement, Respect and Responsibility.

Established a partnership with International Centre for Excellence for the Jolly Phonics and Grammar programs

Conducted regular meetings offsite at ICE discussing whole school progress with Jolly Grammar

Continued with the implementation of Keylinks reading program year 1 – 5

Continued to upskill staff with Interactive Whiteboard and ICT knowledge through cyber cafes and incidental assistance

Continued with "The Hillcrest Way", including inducting all new staff for their knowledge and to allow transition between teachers.



Our School Programs



Our School Staff

SAFE AND CARING LEARNING ENVIRONMENT

There was a noticeable increased requirement for administrative staff to complete staffing processes within guidelines.

The Department of Education mandate for staff to access Long Service Leave entitlements provided a number of extended fixed term contracts for temporary relief staff.

	No	FTE	AB'L
Administration Staff			
Principal	1	1.0	0
Deputy Principal	2	1.4	0
Total Administration		2.4	0
Teaching Staff			
Other Teaching Staff	25	18.6	0
Total teaching Staff	25	18.6	0
School Support Staff			
Clerical / Administrative	3	1.7	0
Gardening / Maintenance	2	0.8	0
Instructional	1	0.6	1
Other Non-Teaching Staff	10	5.7	0
Total School Support Staff	16	8.8	1
TOTAL	44	29.8	1

All teaching staff meet professional requirements for teachers in Western Australian schools and are registered with the Teacher Registration Board of WA.

This year we were fortunate to have two Hillcrest Primary School staff members recognised for their contributions to developing and maintaining an Inclusive learning environment for our students.

Aboriginal and Islander Education Officer *Charmaine Thomas* and School Psychologist *Ken Berry* were nominated for their dedication and commitment to their roles in the WA Education Awards 2014.



Our School Environment

PHYSICAL AND NATURAL ENVIRONMENT

Sustainability

Building Program

Revegetation

Refreshment Program

Universal Ramp
Upgrades

Announcement of
relocation Hudson Street
Kindergarten to main
site.

Administration
Building upgrade
announced

Drake Street
Revegetation Project.

School Orchard

Nature Playground
Development



Universal Access Ramps were completed at the front entrance, veranda, canteen and lower oval access provided.



Acrod Parking bays were upgraded and a new parking access procedures implemented in consultation and collaboration with the Bayswater City Shire.



Our School Partnerships

RELATIONSHIP AND PARTNERSHIPS	Year Six Destinations				Year Seven Destinations			
	Male	Female	Total	Male	Female	Total		
North Metropolitan Education Region	19	10	29	9	24	33		
Morley Schools Network	2		2	1		1		
Before and After School Activities	2		2	1		1		
Grasshopper Soccer	1		1		1	1		
Pro Tennis Coaching	1		1		1	1		
School Netball								
Art n Ani	1		1					
Total Football Academy								
Jacaranda OSH		1	1					
Step Into Life Fitness		1	1					
Commonwealth School Banking					1	1		
Bendigo Bank Sponsorship – Sustainability Programs					1	1		
BankWest Community Grants - Ipads	1		1					
Water Corporation Grants – Timed Tap replacement		1	1					



Our School Satisfaction

A new National Online Schools Opinion Survey was conducted for the first time. The response level was not significant however a number of trends could be ascertained from the results.

Responses were overwhelmingly positive with the following parent comments rating highest:

- My child feels safe at this school
- I can talk to my teacher about my concerns
- Teachers expect my child to do their best
- My child likes being at this school
- This school looks for ways to improve



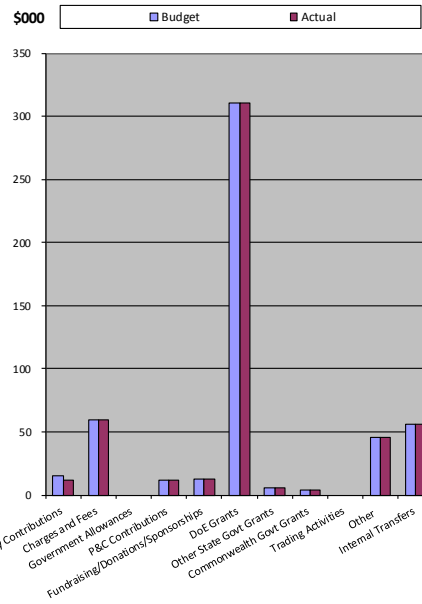
Our School Finances

Insert your School Logo Here or Delete if not required

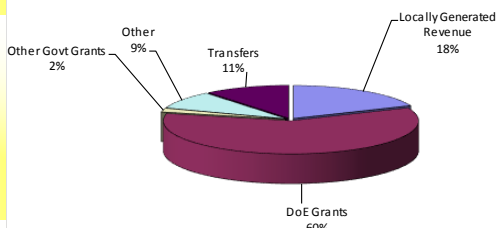
Hillcrest Primary School Financial Summary as at end of 2014

	Revenue - Cash	Budget	Actual
1	Voluntary Contributions	\$ 15,100.00	\$ 11,700.00
2	Charges and Fees	\$ 59,808.00	\$ 59,811.43
3	Government Allowances	\$ -	\$ -
4	P&C Contributions	\$ 12,044.00	\$ 12,044.11
5	Fundraising/Donations/Sponsorships	\$ 12,652.00	\$ 12,652.43
6	DoE Grants	\$ 310,076.22	\$ 310,101.26
7	Other State Govt Grants	\$ 5,298.00	\$ 5,298.00
8	Commonwealth Govt Grants	\$ 3,976.00	\$ 3,976.00
9	Trading Activities	\$ -	\$ -
10	Other	\$ 45,618.00	\$ 45,592.16
11	Internal Transfers	\$ 56,070.00	\$ 56,070.00
	Total	\$ 520,642.22	\$ 517,245.39
	Opening Balance	\$ 72,695.00	\$ 72,695.88
	Total Funds Available	\$ 593,337.22	\$ 589,941.27

Revenue - Budget vs Actual



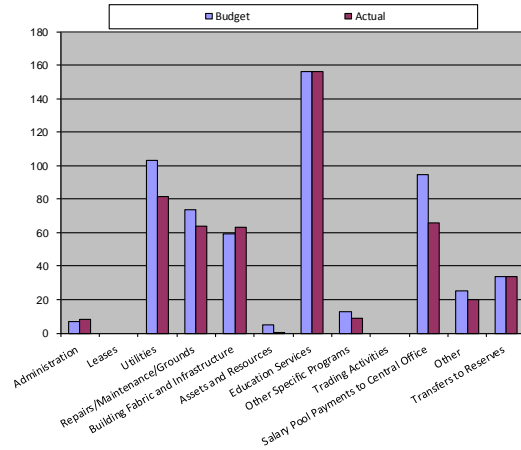
Current Year Actual Revenue Sources



Revenue Source

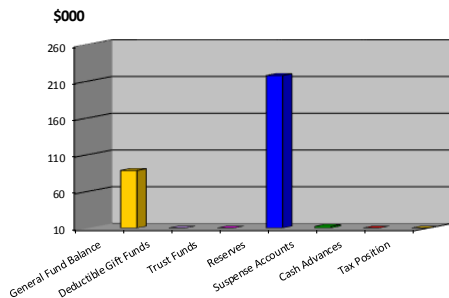
	Expenditure	Budget	Actual
1	Administration	\$ 6,686.00	\$ 8,093.96
2	Leases	\$ -	\$ -
3	Utilities	\$ 102,989.00	\$ 81,404.03
4	Repairs/Maintenance/Grounds	\$ 73,460.00	\$ 63,579.20
5	Building Fabric and Infrastructure	\$ 58,922.00	\$ 63,438.39
6	Assets and Resources	\$ 5,232.00	\$ 231.82
7	Education Services	\$ 155,997.18	\$ 156,327.62
8	Other Specific Programs	\$ 12,986.00	\$ 8,607.87
9	Trading Activities	\$ -	\$ -
10	Salary Pool Payments to Central Office	\$ 94,500.00	\$ 65,917.00
11	Other	\$ 25,228.00	\$ 19,932.90
12	Transfers to Reserves	\$ 34,000.00	\$ 34,000.00
	Total	\$ 570,000.18	\$ 501,532.79

Expenditure - Budget vs Actual



Expenditure Purpose

Cash Position



Cash Position as at:

Bank Balance	\$ 313,917.33
Made up of:	\$ -
1 General Fund Balance	\$ 88,408.48
2 Deductible Gift Funds	\$ -
3 Trust Funds	\$ -
4 Reserves	\$ 217,538.44
5 Suspense Accounts	\$ 12,230.41
6 Cash Advances	\$ 500.00
7 Tax Position	\$ 3,760.00
Total Bank Balance	\$ 313,917.33

Our School Leavers



