

Annual Report 2009



From The Principal

It is with great pleasure that I present our 2009 Annual report to you.

The purpose of this report is to provide our school community with an overview of our achievements in 2009 as well as to share the future directions we aim to pursue in order to continue improving the quality of education we provide our students.

During 2009, the school underwent a Standards Review. Director of School (Swan), Mr Lindsay Hale summarised by saying, "Hillcrest Primary School continues to develop a strong culture of evidence-based strategic planning in support of classroom practice and student achievement."

Congratulations, Hillcrest!

Greg Thomas
Principal
March 2010



Our purpose, through co-operation and participation, is to create an environment in which children have the opportunity to develop their potential to the fullest in educational, social, physical and creative abilities and acquire the skills to assert them in their next stage of development.

Hillcrest Primary School is part of the Swan Education District. The school is atop a substantial hill and offers wonderful views of Perth to the south. Hillcrest Primary School has effectively served its community since opening in 1950.

In 2009, the school provided programmes for approximately 420 students from the off-site Kindergarten (4 year olds) through to Year 7, across sixteen classrooms. Students with mild intellectual disabilities were fully integrated. 20% of students came from a non-English speaking background. An increased enrolment of students from Crisis Shelters occurred.



Students from Years 1 – 7 accessed Specialist programmes in Music, Physical Education and Italian. The school's environmental programmes are gaining recognition within the community and the school is renowned for its Pastoral Care programmes based upon RESPECT.

The school's federally generated Index of Community Socio-Educational Advantage was 991. The table below indicates that our community is strongly represented in the middle quarters of social advantage

Distribution of the social advantage:

Bottom quarter	Middle quarters	Top quarter
28%	42%	30%
		< 1%

At Hillcrest Primary School our Vision is:

We value and practise Justice, Unity, Respect and Responsibility

The ethos of our school is

WARGADO: To Strive

ACADEMIC ACHIEVEMENT

At Hillcrest Primary School we act to improve student performance based on quality data and its analysis.

Performance information about Pre Primary children in 2009 indicated that students entering formal education were already below the state average in Maths and Reading.

The information provided through the National Assessment Program Literacy and Numeracy (NAPLAN) was one of many sources analysed.

Analysis of the 2009 cohort indicated the following trends:

NAPLAN Minimum National Standard (NMS) and Proficiency Bands

Reading	State	Like schools	Meet NMS	Top bands
Year 3	At	Below	96%	15%
Year 5	Below	Below	96%	4%
Year 7	Below	Below	86%	3%

Writing	State	Like schools	Meet NMS	Top bands
Year 3	Just below	Below	98%	7%
Year 5	Just below	At	96%	10%
Year 7	Below	Below	86%	0%

Spelling	State	Like schools	Meet NMS	Top bands
Year 3	At	At	100%	6%
Year 5	Above	At	96%	6%
Year 7	Above	At	94%	0%

P & G	State	Like schools	Meet NMS	Top bands
Year 3	At	At	87%	22%
Year 5	Above	At	96%	4%
Year 7	Above	Below	94%	8%

Numeracy	State	Like schools	Meet NMS	Top bands
Year 3	Just below	Below	91%	6%
Year 5	At	At	94%	2%
Year 7	Just below	Below	94%	0%

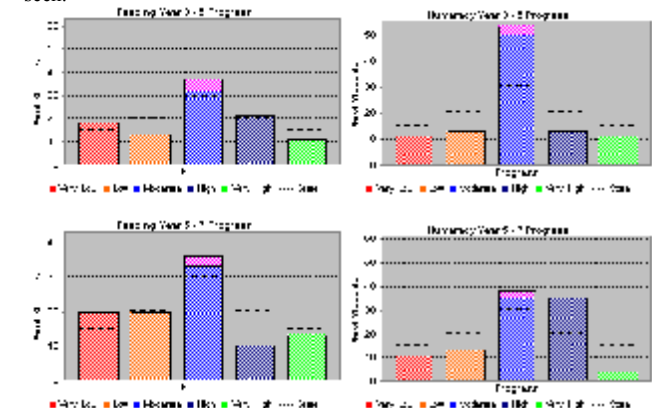
Hillcrest's student performance aligned more closely to the state average than the like-school average.

Spelling and Punctuation & Grammar were Hillcrest's best performed subjects.

Year 5 was the best achieving cohort.

Student progress identified by NAPLAN

Student progress from Year 3 (2007) to Year 5 (2009) and Year 5 (2007) to Year 7 (2010) with the dotted line showing the state average can be seen.



In general, student progress, or value adding, was satisfactory with greater progress being recorded in Numeracy than Reading.

Teacher Judgement and Whole School Grade Allocation

Subject	A	B	C	D
Reading	22%	38%	26%	14%
Writing	25%	40%	27%	8%
Number	29%	35%	27%	9%

Grade allocation paralleled NAPLAN results.

Priorities 2010

Examination of student achievement data by staff and the School Council led to the identification of:

- **Reading**
- **Number**

to be addressed as priorities through the School Improvement Plan 2010.

NON-ACADEMIC ACHIEVEMENT

Attendance and engagement

The regular attendance rate for students in 2009 reflected the positive learning environment.

Overall student attendance of 93.7% was above the state average of 92.6%

The attendance of Aboriginal students was 77%, which was below the state average of 81%.

An Attendance Strategy was developed in 2009, with targets being set for the whole school, significant groups, and where necessary, individuals.

The Attendance Strategy will continue in 2010.

Attitude, behaviour, effort and values

In general, Hillcrest Primary School students exhibited positive attitudes, appropriate behaviour and were consistent with their efforts.

As a result, student suspensions affected only 1 student to a total of 1 day.

This was a reduction on 2008 rates.

Strengths include:

- Civic and social responsibility
- Accepting differences in others
- Positive participation

Students made gains in demonstrating perseverance and independence.

Students need to be able to set and work towards goals. This can be addressed by through the use of Student Self Reflection Sheets and *Looking Forward* sessions.

The school will continue its successful Pastoral Care and *Virtues* Programs.

The school will continue its successful Pastoral Care and *Virtues* Programs.

PROGRESS ON IDENTIFIED PRIORITIES

The Hillcrest Primary School Improvement Plan responded to the strategic directions of the Plan for Public Schools 2008 – 2001 and Focus 2009 through the 2009 School Improvement Plan. Detailed strategic plans were produced for the priority areas of Writing, Mathematics and Pastoral Care, as identified by the School Council.



Three priorities were addressed in 2009.

1. Writing – Targets 2009 in percentages

Grade	A	B	C	D
Target	15%	40%	35%	15%
Result	25%	40%	29%	10%

Targets exceeded

2. Working Mathematically Targets 2009 in percentages

Grade	A	B	C	D
Target	15%	49%	26%	10%
Result	18%	43%	29%	10%

Targets met

3. Pastoral Care – see Attendance and Engagement

Targets met

In general, the strategies used have led to positive gains in the priority areas

HIGHLIGHTS OF THE YEAR

- * Buildings painted and carpeted
- * Dance program
- * African Drums incursion
- * Camp Rottneat
- * Literacy through Art
- * Buddy Class activities
- * Funded time for Reports
- * Quality Assembly items
- * Winning the Inters
- * Partnerships with ECU
- * Mimios and interactive whiteboards in use
- * School fundraising for charities
- * Reward Play for BMIS



PARENT, STUDENT AND TEACHER SATISFACTION

Hillcrest Primary School operates in partnership with the community. During 2008, parents had the opportunity to give feedback to the school through “Surveying the School’s Community.” Responses formed the basis of the School Review process.

100% of parents surveyed in 2009 agreed that the school has clear goals and a positive school identity.

Parent and students surveyed throughout the year believed teachers were committed and enthusiastic and encouraged students to achieve to the best of their ability

Parents are scheduled to be surveyed again at the end of 2010

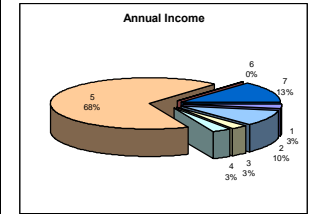


ANNUAL BUDGET AND ACCOUNTS

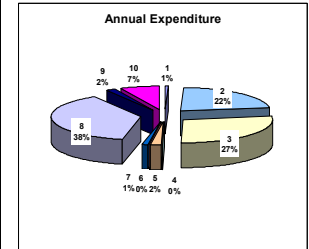
Hillcrest’s financial and physical resources were managed to optimize learning outcomes for students.

SCHOOL BUDGET AND ANNUAL ACCOUNTS FOR 2009

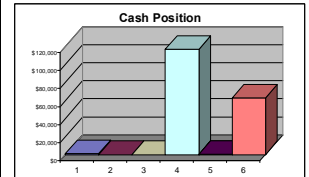
Annual Income	
Budget	Actual
1 Voluntary Contributions	\$9,394 \$9,394
2 Charges and Fees	\$34,262 \$34,262
3 P & C Contributions	\$10,000 \$9,120
4 Fundraising and Donations	\$8,270 \$11,068
5 State Government Grants	\$230,982 \$230,982
6 Commonwealth Govt Grants	\$1,516 \$1,516
7 Miscellaneous	\$46,070 \$45,207
Total Income	\$340,494 \$341,549
Opening Balance	\$46,370 \$46,370
Total Funds Available	\$386,864 \$387,919



Annual Expenditure	
Budget	Actual
1 Administration	\$1,700 \$1,715
2 Utilities	\$68,745 \$60,568
3 Repairs and Maintenance	\$54,249 \$74,567
4 Capital Works	\$0 \$0
5 Assets and Resources	\$5,828 \$5,828
6 Leases	\$0 \$0
7 Professional Development	\$5,000 \$2,981
8 Education Programs	\$103,370 \$103,370
9 Student Services	\$2,603 \$4,617
10 Miscellaneous	\$29,954 \$18,860
Total Expenditure	\$271,449 \$272,504
Transfer to Asset Reserves	\$49,500 \$49,500
Total Funds Carry Forward	\$65,915 \$65,915



Cash Balance as at 31st December 2009	
Bank Balance	\$180,349
Made up of:	
1 Carry Over Grants (committed)	\$1,183
2 Deductible Gift Funds	\$0
3 Trust Funds	\$0
4 Asset Replacement Reserves	\$116,341
5 Suspense Accounts	\$100
6 Uncommitted Funds	\$62,725
Total Bank Balance	\$180,349



Other financial information			
Voluntary contributions collection rate	57.7%	Total creditors as at: 31st December 2009	\$22,079
Total bad debts written off for the year	\$0	Total Debtors as at: 31st December 2009	\$0
Total assets/resources written off for the year	\$0	Total value of new leases for the year	\$0

A brief comment on the financial performance for the year: Hillcrest is in a sound financial position. Expenditure on replacement equipment and furniture was carried out. Ongoing replacement equipment is expected in 2010 with additional whiteboards to be purchased. Extensive fundraising is expected to be implemented for the replacement of shade structures no longer under the faults program.

Any queries related to the Hillcrest Primary Annual Report 2009 can be directed to the Principal by telephoning 9370 2330.

Additional information about Hillcrest Primary School can be obtained from these websites:

- www.myschool.edu.au
- www.det.wa.edu.au