

Hillcrest Primary School

Annual Report 2013



Our Vision

We value and practice Justice, Unity, Respect and Responsibility.

Our Purpose

Through co-operation and participation we will create an environment in which children have the opportunity to develop their potential to the fullest in educational, social, physical and creative abilities and acquire the skills to assert them in their next stage of development.

SCHOOL CONTEXT

Our Report

Welcome to the 2013 Hillcrest Primary School Annual School Report. This report to the school community includes a summary of the year's highlights, information on our school performance, progress on the 2013 school priorities and other relevant data. School council has considered and approved the report.

I am confident that after reading this report you will agree that 2013 was an extremely successful year for our school. Analysis of data, the development of target setting in key strategic areas and use of staff, parent and community feedback contributed to improve planning processes during the year.

The systemic challenges to be faced in 2014 have been clearly articulated, planned and prepared in the 2013 – 2015 Hillcrest Strategic Plan 'Building a Better Future'. Ongoing development of distributed leadership across the school, quality teaching and learning and the continuing partnerships between parents, P&C, School Council and the wider community will ensure we remain committed to our focus of ensuring '*every student is a successful student*'.

Dan Bralich
Principal



Our School

Hillcrest Primary School is part of the North Metropolitan Education Region. The school is atop a substantial hill and offers wonderful views of Perth to the south. Hillcrest Primary School has effectively served its community since opening in 1950.

In 2013 our school provided programmes for approximately 430 students from the off-site Kindergarten through to year seven across sixteen classrooms. All students are fully integrated into mainstream classroom contexts. Twenty percent (20%) of students come from non-English speaking backgrounds.

Students from years one to seven accessed specialist programmes in music, physical education, art and Japanese. The school's environmental focus continues to gain momentum within the community and the school is revisiting its pastoral care program through participation in the Positive Behaviour in Schools program.



Building a Better Future

Hillcrest Primary School has always had strong interpersonal relationships between students, staff and its wider community based on the current core values of Justice, Unity, Respect and Responsibility.

Our school is involved in various mentoring and volunteer programs that enhance student-teacher and school-community relationships. Our partnership with Edith Cowan University continues to generate excellent pre-service teachers that are in high demand upon graduation. There is particular value in our after-school community partnerships that provide students with a range of supervised learning experiences on school grounds.

As a member of the Morley-Mt Lawley Education Network our staff learning is enriched by participation in regular network meetings. Our knowledge and expertise is shared as hosts for Science and ESL/D meetings that help lead implementation of the Australian Curriculum for teachers in these specialist areas.

2013 saw the kindergarten to year six extension of the 'The Hillcrest Way' whole school approach to teaching of literacy and numeracy. There has been a strong focus on the development of explicit targets and an emphasis on evidence based, meaningful and contemporary strategies in response to system level and school based data.

A curriculum committee consisting of lead teachers has been implemented for the development of whole school literacy and numeracy plans which contain strategies provided for each phase of schooling. A Literacy and Numeracy specialist was appointed one day per fortnight to focus classroom support in areas highlighted by both system and school data.

A focus on early childhood, students at educational risk and pastoral care has been enhanced by close collaboration with other agencies through the appointment of a school chaplain to enhance the learning support team case managing identified students.

The Hillcrest Primary School strategic plan 'Building a Better Future' was reviewed in collaboration with the Hillcrest Primary School leadership team and school staff. The plan endorsed and supported by the school council identifies five key priorities aligned to the Department of Education's Strategic Plan for WA Public Schools 2012-2015 Excellence and Equity and Focus Directions 2013.

ICT infrastructure was again identified as requiring an upgrade to ensure the use of online resources to plan teaching and learning programs. An ICT committee was established to guide the upgrading of the entire school facilities to ensure staff and students have the opportunity to access ICT to enhance learning and teaching.

These continue to be exciting times for our school and wider community with the implementation of the Australian Curriculum, support for students as they graduate to secondary school from year six and seven and the systemic challenges as we enter a new era of school funding and autonomy.



Building a Better Future

CURRICULUM PLANNING AND DELIVERY

In striving to achieve the school's purpose and vision, the school community endorsed a school development plan that describes the targets, strategies and resource allocations and means by which the plan's success can be measured.

Below is a summary of the major strategies implemented in 2013.

English

The focus on a whole school approach to the teaching of literacy continued with the extension of a K-7 'Hillcrest Way Literacy File' in collaboration with teaching staff and input from WAPPA's early years literacy specialist Katrina Bonetti. This process of engaging in whole school approaches to the teaching of reading, spelling, phonics and grammar commenced with the appointment of a literacy leader 0.1 FTE in 2013. Professional learning for staff (teachers and education assistants) was provided on School Development Days and at Staff Meetings to further develop professional knowledge of Australian Curriculum and assist with planning, teaching, assessing and reporting with the Australian Curriculum in English. Teachers reviewed their teaching against the whole school plan with an emphasis on explicit teaching of phonics and spelling rules.

Mathematics

Teachers identified the 'Origo Slate' online maths program to assist with the adoption of whole school approaches to the implementation of the Australian Curriculum. Students have home access to 'Mathletics', a computer based program that enhances classroom instruction. The emphasis for 2013 was the appointment of a 0.1 FTE numeracy specialist to assist with the development of whole school approaches to numeracy. Professional learning for staff (teachers and education assistants) was provided on School Development Days and at Staff Meetings to further develop professional knowledge of Australian Curriculum and assist with planning, teaching, assessing and reporting with the Australian Curriculum in Mathematics. A checklist of mathematical language was developed for each year level and teachers taught the understanding of the language explicitly.

Science

Science was a focus for reporting using the Australian Curriculum in 2013. 'Primary Connections' science and literacy program were selected as a foundation for whole school implementation. A highly successful 'Science Day' sponsored by IINET continued to provide a platform for students and staff to engage greater in the science learning area. Staff professional learning and engagement with the Morley Science Network developed our ongoing expertise to help fully implement the 'Primary Connections' program. WAMSE results reflected the whole school science focus with all year levels demonstrating improved performance over past years.

Society and Environment

Teachers focussed on Information, Communication and Participation activities which were further supported by weekly library sessions. Harmony Day and International Food Feast were again highlights. An increase in the teaching of Aboriginal Perspectives Across the Curriculum and celebration of NAIDOC were a focus for 2013.

Health and Physical Education

All classes received at least one weekly lesson of Physical Education and a sports session. A number of incursions supplemented the Health program and promoted the healthy and safe lifestyle. Class teachers engage in a regular morning fitness lesson with team sports timetabled every Friday afternoon. Our school participates in interschool athletics and lightning carnivals and operates three sport factions for school sporting events.



Building a Better Future

The Arts - Music

All students attend a weekly music lesson with our music specialist Mrs Su-Wei Neo. Specialist instrumental music is available in guitar, trumpet, clarinet and flute. The school choir continued to entertain and showcase their talents at a number of community events including for the first time the WA Primary School Massed Choir at Winthrop Hall thanks to P&C funding. It is planned to attend this event regularly in the future.

The Arts – Visual

Students attend a weekly Art lesson with Ms Siobhan Duggan in the multipurpose room. Lessons often make use of recyclable material and are regularly integrated by classes into their school assembly presentations. Humphries Dance studio conducts a term of lessons with primary students in term three subsidised by the Hillcrest P&C.

Languages – Japanese

Students in years 3 – 7 received a weekly lesson in Japanese with Collett Sensei. A community school survey indicated a preference to implement an Asian language for 2013. Japanese was the preference for students to align with secondary options available at John Forrest Secondary College.

Technology and Enterprise

The learning area continues to be integrated into the other learning areas. Major purchases for ICT included an additional four interactive whiteboards, a suite of five Ipads for loan throughout the school and installation of an Activtable for use in the pre-primary.

Information Communication Technology

The ICT program at Hillcrest Primary School aims to improve student learning through the increasing use of ICT throughout the school's teaching and learning program. Experienced school staff assist teachers to incorporate ICT into relevant learning and teaching programs. A focus on the development of an ICT committee to oversee the review and update of existing ICT implementation throughout the school is recommended for 2013.

Sustainability

The development of a whole school approach to environmental awareness through the Australian Curriculum continues to be a priority. Strong community support has seen the collaboration with local ABC radio gardening identity Sabrina Hahn who has nominated Hillcrest Primary School as her metropolitan project for the next few years. A Sustainability Audit was conducted with findings contributing to the development of the Sustainability Plan which incorporate a number of community initiatives to align with curriculum activities. Clean-up Australia Day, class garden beds, worm farms, rainwater tanks, recycling initiatives, cash for cans and waste free days are an example of some of the 2013 initiatives. A Bendigo Bank grant of \$2 500 has been used to develop a student vegetable garden. Collaboration with the City of Bayswater has continued our revegetation of the Drake Street front entrance to the school.

Student Welfare and Well Being

School funding is used to provide a whole school reward incentive program. Staff engaged in the Positive Behaviour School program for the first time in 2013 evaluating the effective level of current school behaviour management programs. The appointment of a YouthCare Chaplain was also achieved through use of flexible resource funding. A case management approach to identifying and managing students at risk with use of School Support Programs Resource Allocation (SSPRA) funding to enhance the expertise of the Learning Support Team.



Building a Better Future

ACADEMIC ACHIEVEMENT

Our Performance

At Hillcrest Primary School we act to improve student performance based on quality data and its analysis. Performance information about pre-primary children in 2013 indicated students entering formal education were already below the state average in Maths and Reading.

Teacher judgements of grade allocations generally fall within the expected range. Year 3 grade distribution remains an exception with a significant differential between the zero percent 'A' allocations and 14.9% 'Excellent' test results. Teachers will continue to review and moderate student achievement at whole school, phase of development and cohort level.

NAPLAN Reading progress continues to be above the expected range in year 3 - 5 with results in year 5 - 7 also reflecting improved progress. Numeracy progress remains a concern for most year levels with apart from an upward trend in year three levels. Grammar and Punctuation progress and achievement are a focus for school improvement strategies.

Curriculum leaders implemented a targeted approach to literacy and numeracy through in-class mentoring and monitoring of whole school practices. Phase of development teams reviewed standards through data analysis, moderation and target setting. The 'Hillcrest Way' whole school approach was expanded to include kindergarten to year seven. Whole school numeracy practices continue to be developed in consideration of identified strategic improvement targets.

WAMSE achievement falls generally within one standard deviation of the predicated school mean.

Details and comparisons are available from the WA Department of Education www.det.wa.edu.au/schoolsonline and the Australian Curriculum Assessment and Reporting Authority www.myschool.edu.au.



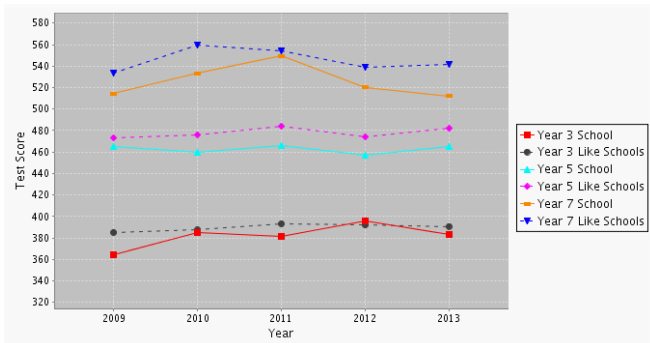
Building a Better Future

ACADEMIC ACHIEVEMENT

National Literacy and Numeracy Testing (NAPLAN)

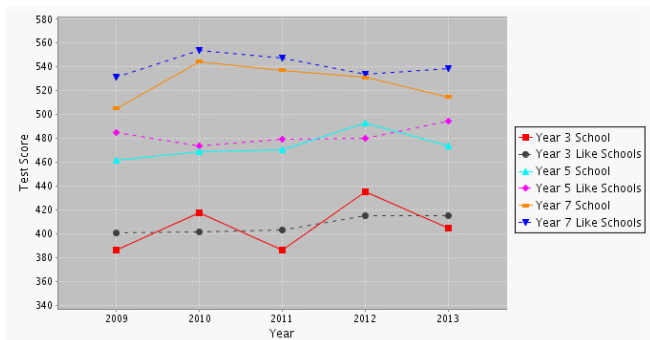
This national testing program appraises the performance of year 3, 5 and 7 students across Australia. It is marked by an external body and gives student performance in relation to other students in the state. Results are compared to a *benchmark* (the minimum expected) and an *achievement target* (the expected standard). Individual performance is confidential to the student, parent and teacher but a guide to Hillcrest Primary School's performance is the percentage of students achieving at or above these indicators.

Numeracy



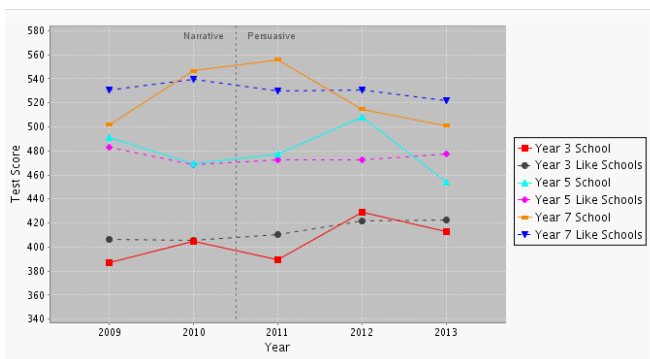
School improvement efforts continue to focus on achieving school NAPLAN results above like school results. The School Development Plan focuses on addressing specific areas of weakness to improve performance.

Reading



Whole school strategies for the teaching of literacy continue to be implemented. With improved target setting and intervention we aim to improve on these results.

Writing

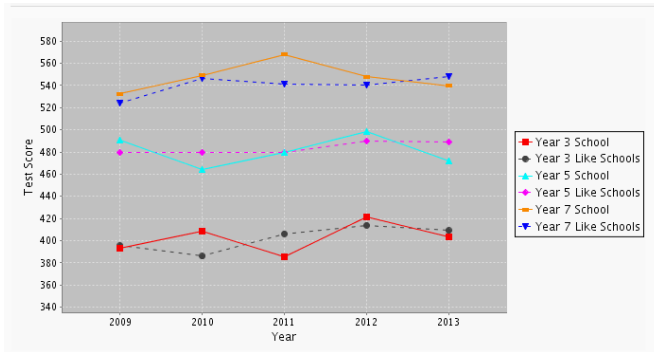


The success of the early years literacy approach is being extended to incorporate the upper years to address the difference in performance when compared to like schools. Increased focus on whole school teaching of persuasive writing genre.



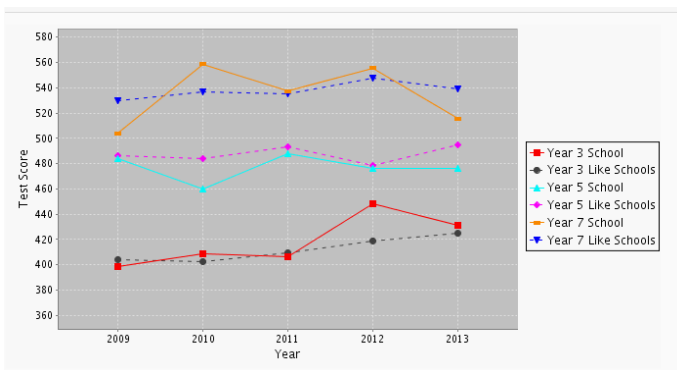
Building a Better Future

Spelling



Spelling results are similar to ‘like’ schools. Staff analysis indicates potential for students to achieve at higher levels. Results show the need for more explicit teaching of phonics across each year level. The development of specific year level targets will be a consideration for 2014.

Grammar & Punctuation



Grammar and punctuation are improving in the early years as an outcome of more explicit teaching through the use of literacy blocks. The focus will continue to be the extension of the whole school approaches developed in the ‘Hillcrest Way Literacy File’.

Western Australian Monitoring Standards in Education (MASE)

The WAMSE tests are designed to test the knowledge, skills and conceptual understanding of students in year 5 and 7 in Science and year 7 in Society and Environment in Western Australian Public Schools. This is the final year of system WAMSE assessment.

Percentage of students achieving at or above Test Standard

	Science			Society & Environment		
	2011	2012	2013	2011	2012	2013
Year 5	47%	44%	49%	38%	35%	38%
Year 7	39%	33%	35%	47%	40%	35%

	Science			Society & Environment		
	2011	2012	2013	2011	2012	2013
Year 5	2	2	2	2	2	2
Year 7	2	2	3	2	2	3

1	above expected - more than one standard deviation above the predicted school mean
2	expected - within one standard deviation of the predicted school mean
3	below expected - more than one standard deviation below the predicted school mean
	No data available or number of students is less than 6

Improved science results reflect whole school implementation of Primary Connections program.



Building a Better Future

NON-ACADEMIC STUDENT ACHIEVEMENT

Student Enrolment

Semester 1	2010	2011	2012	2013	2014
Primary (Excluding Kin)	384	380	399	377	372

Student Attendance

	Non - Aboriginal			Aboriginal			Total		
	School	Like Schools	WA Public Schools	School	Like Schools	WA Public Schools	School	Like Schools	WA Public Schools
2011	94.4%	94.2%	93.7%	79.5%	89.6%	81.6%	93.3%	94.1%	92.7%
2012	94.6%	94.0%	93.3%	86.4%	88.1%	81.1%	93.9%	94.0%	92.3%
2013	93.6%	94.1%	93.7%	76.7%	89.8%	80.7%	92.1%	94.0%	92.6%

Attendance rates continue to be maintained through careful monitoring of students patterns and attendance. Case management is used with students who are at risk with their attendance issues. School of Hoops program trialled in 2013 to target severe at risk students. There is a growing trend of parents taking children on extended holidays which is having a detrimental effect on strategies to improve attendance.

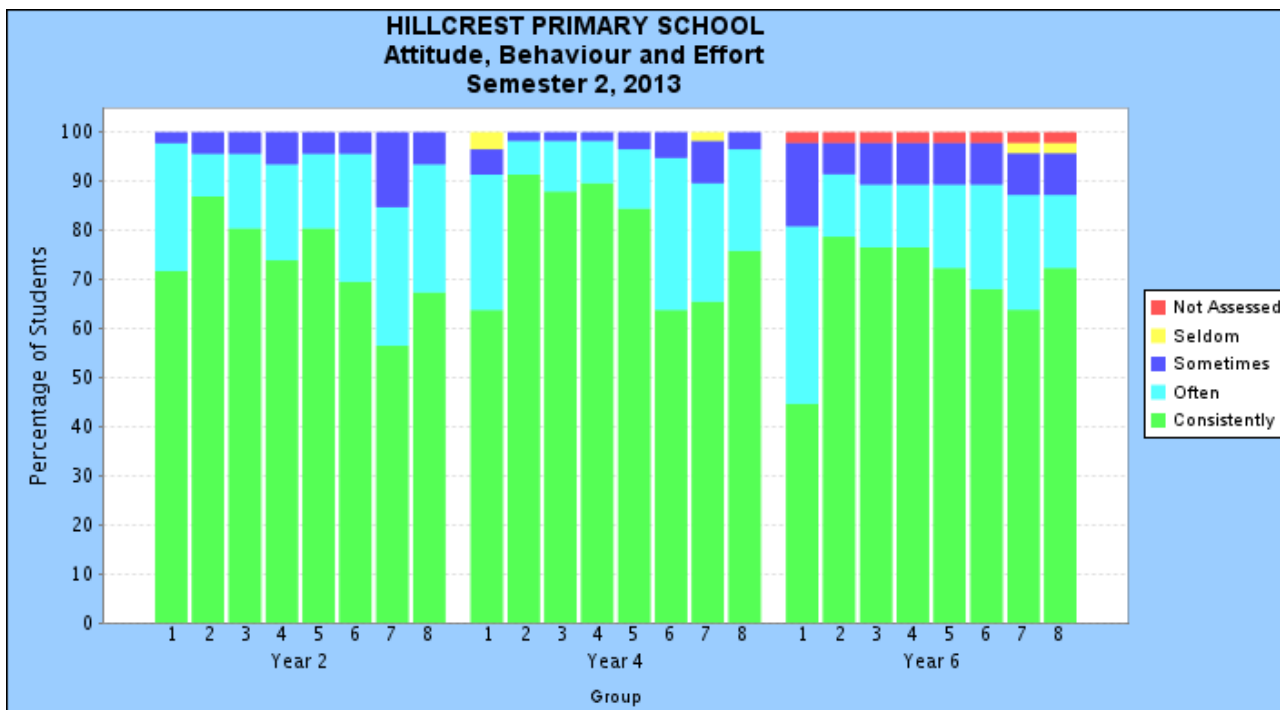
Destination Schools	Male	Female	Total
4026 John Forrest Secondary College	17	13	30
4941 Carnarvon Community College	1		1
4110 Girrawheen Senior High School	1		1
4022 Hampton Senior High School		1	1
4025 John Curtin College Of The Arts		1	1
4112 Lockridge Senior High School	1		1
4051 Morley Senior High School	1		1
4038 Mount Lawley Senior High School	1		1
4042 Perth Modern School		1	1
4125 Wanneroo Secondary College		1	1

Students continue to leave Hillcrest for private schooling in year six with a growing trend towards commencing in year five. We have worked closely with John Forrest Secondary College to implement a smooth transition in preparation for the commencement of year seven in 2015.



Building a Better Future

Attitude, Behaviour & Effort



1. Works to the best of their ability
2. Shows self respect and care
3. Shows courtesy and respect for the rights of others
4. Participates responsibly in social and civic activities
5. Cooperates productively and builds positive relationships with others
6. Is enthusiastic about learning
7. Sets goals and works towards them with perseverance
8. Shows confidence in making positive choices and decisions

Teacher Qualifications

All teaching staff met the professional requirements to teach in Western Australian public schools and can be found on the public register of teacher of the Teachers Registration Board of Western Australia.

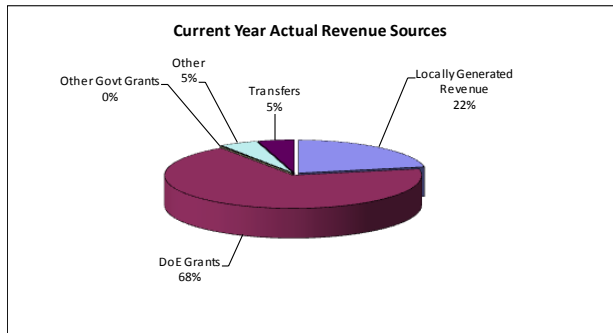
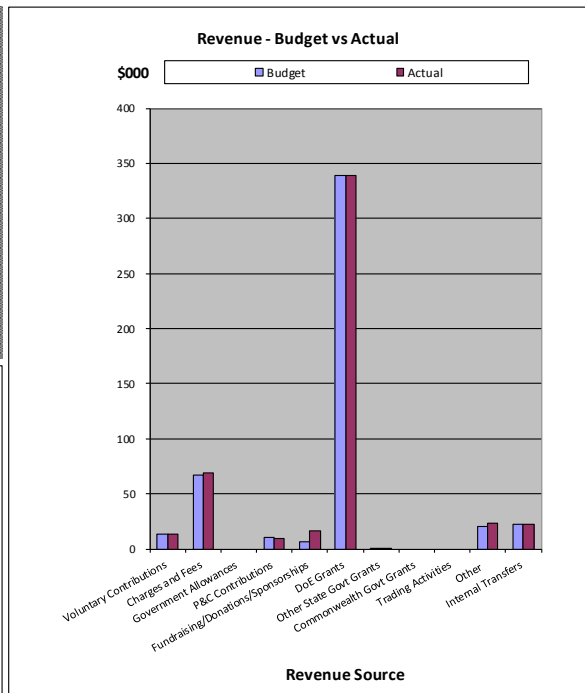


Building a Better Future

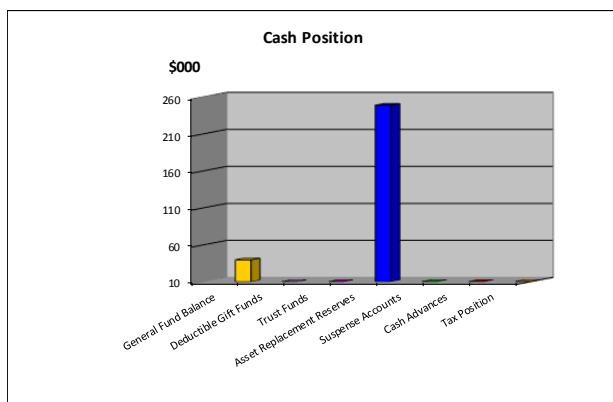
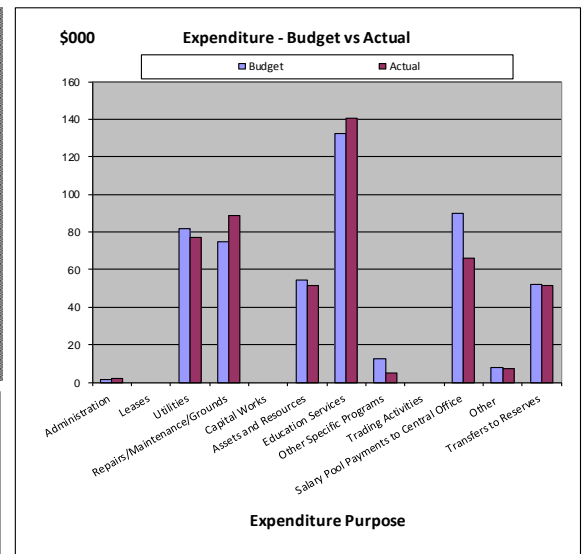
FINANCES

Hillcrest Financial Summary as at 14 July 2014

	Revenue - Cash	Budget	Actual
1	Voluntary Contributions	\$ 13,690.00	\$ 13,230.00
2	Charges and Fees	\$ 67,362.50	\$ 68,998.35
3	Government Allowances	\$ -	\$ -
4	P&C Contributions	\$ 10,000.00	\$ 9,360.00
5	Fundraising/Donations/Sponsorships	\$ 6,029.51	\$ 16,744.70
6	DoE Grants	\$ 338,658.48	\$ 338,659.13
7	Other State Govt Grants	\$ 750.00	\$ 750.00
8	Commonwealth Govt Grants	\$ -	\$ -
9	Trading Activities	\$ -	\$ -
10	Other	\$ 20,149.00	\$ 23,576.12
11	Internal Transfers	\$ 22,610.00	\$ 22,610.00
	Total	\$ 479,249.49	\$ 493,928.30
	Opening Balance	\$ 35,034.40	\$ 35,034.40
	Total Funds Available	\$ 514,283.89	\$ 528,962.70



	Expenditure	Budget	Actual
1	Administration	\$ 1,600.00	\$ 1,883.49
2	Leases	\$ -	\$ -
3	Utilities	\$ 81,567.00	\$ 76,943.13
4	Repairs/Maintenance/Grounds	\$ 74,500.00	\$ 89,007.87
5	Capital Works	\$ -	\$ -
6	Assets and Resources	\$ 54,610.00	\$ 51,246.69
7	Education Services	\$ 132,122.84	\$ 140,301.02
8	Other Specific Programs	\$ 12,650.00	\$ 4,934.01
9	Trading Activities	\$ -	\$ -
10	Salary Pool Payments to Central Office	\$ 90,000.00	\$ 66,000.00
11	Other	\$ 7,742.25	\$ 7,532.31
12	Transfers to Reserves	\$ 51,982.00	\$ 51,590.00
	Total	\$ 506,774.09	\$ 489,438.52



Cash Position as at:	
Bank Balance	\$ 281,651.93
Made up of:	\$ -
1 General Fund Balance	\$ 39,524.18
2 Deductible Gift Funds	\$ -
3 Trust Funds	\$ -
4 Asset Replacement Reserves	\$ 248,447.66
5 Suspense Accounts	\$ 3,242.91
6 Cash Advances	\$ 200.00
7 Tax Position	\$ 2,877.00
Total Bank Balance	\$ 281,651.93



Building a Better Future

CELEBRATIONS

Commenced Japanese LOTE	Positive Behaviour Schools Committee
Humphries Dance program	Learning Support Team
School Choir	Ride to School Day
Rottnest Camp	Harmony Day
International Feast Day	Mystery Excursions
ATAS program	Buddy Class activities
Interschool Winter Sport Success	ANZAC Service
P&C school disco	Quality Assembly items
Partnerships with Edith Cowen University	Fine Pupil Awards
Interactive whiteboards purchased	Year 7 graduation ceremony
Completed classrooms air conditioning	School fundraising for charities
Reward Play for BMIS	Eagles Cup Runner Up
School Website	Additional time for Reporting
Easter Raffle	Father's Day Breakfast
King and Queen	Spell-a-thon
Roof replacement completed	IINET Science Day
Master School Portraits	Kaarla Kaatijin - Theatre
Sabrina Hahn - Sustainability Ambassador	Musical Harmony Day
School of Hoops	Grip Leadership Course
ADIDAS School Fun Run	Swan Canning Leadership Forum
Visiting Japanese Science teachers	Inaugural Father's Day Breakfast
NAIDOC week	Sports Faction Carnivals

Our Parent's Say...

Hillcrest Primary School operates in partnership with the community. Through class meetings, parents had the opportunity to give feedback to the school. Responses indicate that in general parents are satisfied with the school. Many parents drive their children a considerable distance to be able to attend our school, due to its clear goals and a positive identity. Parents indicated teachers were committed and enthusiastic and encouraged students to achieve to the best of their ability. Information received from graduating students complements the parent view.

The P&C are an integral support and guide to the effectiveness of our school community. Parents and other community members have volunteered time to assist in classrooms, the canteen, school excursions and many fundraising events.

Our Future Directions

Our school continues to focus on 'Building a Better Future' for our students by providing a high quality education guided by our community. This report has been endorsed by the Hillcrest Primary School Council. Any queries related to the Hillcrest Primary School Annual Report 2013 can be directed to the Principal by telephoning (08) 9370 2330. Additional information is available from our website at www.hillcrestps.wa.edu.au.



Building a Better Future