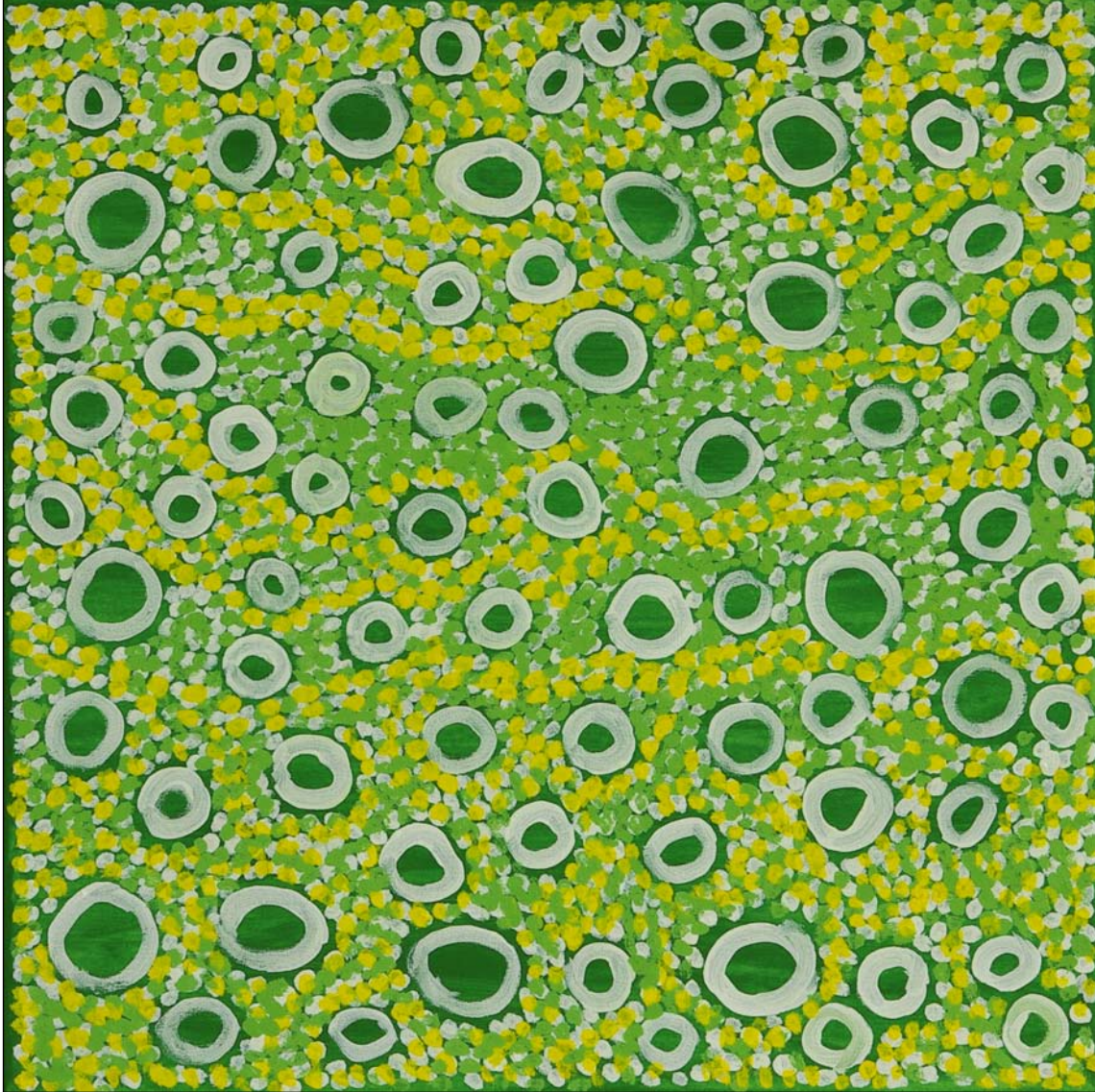


CRATE NEWS

DECEMBER 2010



Milinti Dorothy May: *Lily Pad*, 2009
acrylic on canvas
60 x 60 cm.



ART ON THE MOVE

The National Exhibitions Touring Structure for
Western Australia Inc.
8a Carbon Court, Osborne Park, 6017
PO Box 1835, Osborne Park
Delivery Centre, 6916
Telephone (08) 9242 7887
Facsimile (08) 9242 7878
Email artmoves@artonthemove.com.au
Website <http://www.artonthemove.com.au>

Kimberley Aboriginal Artists Sharing difference on common ground

Lily Pad, 2009, is one of the artworks featured in ART ON THE MOVE's new touring exhibition *Kimberley Aboriginal Artists - Sharing difference on common ground*. Presented by Tim Acker on behalf of Kimberley Aboriginal Artists, and curated by Sharon Tassicker, this exhibition features work from four art centres in the Kimberley region of Western Australia - Mangkaja Arts, Mowanjum Art and Cultural Centre, Waringarri Aboriginal Arts and Warmun Aboriginal Arts.

The pieces in this exhibition have been chosen to showcase the quality, diversity and scope of the artwork being produced at these centres. The artists hope that their work will promote greater understanding as they share aspects of their culture with a wider audience. See page 4 for more about this vibrant exhibition.

ART ON THE MOVE CHRISTMAS BREAKFAST, 2010



All photographs by Pilar Mata Dupont



Artist Laurel Nannup assists Executive Director Paul Thompson in drawing prizes in the Christmas raffle.



Nien Schwarz from the School of Contemporary Art at ECU and Sandra Murray from Fremantle Prison Gallery enjoy the festivities.



Deputy Director of the Art Gallery of WA, Gary Dufour, with Fiona Gavino from the Berndt Museum, Jude Savage from the Art Gallery of WA (Chair of ART ON THE MOVE's Committee) and Jane King from Museums Australia.



Artist Annabel Dixon, with ART ON THE MOVE's Julie Thomas.

The Staff and Committee of ART ON THE MOVE wish all of our members and supporters a very happy and safe Festive Season.

The ART ON THE MOVE office will be closed for the Christmas break from Wednesday December 22 and will reopen on Monday January 10, 2011



Artist Miriam Stannage collects her prize in the Christmas raffle.



The crowd enjoying the festivities.



ART ON THE MOVE Committee member Rachael Wilsher-Saa from the WA Museum, Albany, chats with Alex Pusenjak, Sponsorship Officer from the Heart Foundation.

A CASE OF DÉJÀ VU

Tour Manager: Art On The Move
Contact Julie (08) 92427887



Seven paintings and a suitcase by Thomas Hoareau

Exhibition Details

ORGANISING INSTITUTION
Thomas Hoareau (Independent)

EXHIBITION COORDINATOR
Thomas Hoareau

ARTIST
Thomas Hoareau

MEDIUM
painting

INSTALLATION
8 major works, 2 small studies,
photomontage display.
60 - 100 running metres

DOCUMENTATION
Electronic invitation
Gallery/room sheets
Didactic panel
Media kit with press release, digital images
and acknowledgements

EDUCATION
Catalogue
Education Package (includes teachers notes,
activity sheets, gallery/room sheet)
Lectures and floor talks upon request
(subject to availability and funding)

CRATES
Up to 2 crates, totalling 2 cubic metres (tbc)

TOUR DURATION
WA June 2011 - June 2013 (tbc)

COST SHARE
WA tba

ARTIST ON THE MOVE & ARTBUS
Sponsored by Healthway to promote
the Heart Foundation's
Smarter than Smoking message



A Case of Déjà vu - Seven paintings and a suitcase by Thomas Hoareau presents a series of seven paintings created between 1983 and 2010 which use iconic works from the history of Western Art to articulate contemporary issues. It includes large-scale reworkings of paintings such as Theodore Gericault's *The Raft of the Medusa* (1819) and Gustave Courbet's *The Stonebreakers* (1850-51).

In addition to these new paintings, Hoareau presents a series of works dating from the early ninties, that are contemporary re-workings of iconic paintings from the history of Western Art, representing the artist's continued interest in this theme over three decades of his career. *The Girl at the Counter of Leabridge Newsagent* (1998) is a street-level reworking of Manet's *Bar at the Folies-Bergere* and *Northbridge Gothic* (1998) presents Grant Wood's *American Gothic* reworked within a contemporary social milieu.

The exhibition also includes two small black and white studies for two of the major works and a photographic montage comprising a selection of images that were referred to in the production of the paintings.

"Hoareau's work thoughtfully pays homage to past masters but importantly recognises the potential of such complex paintings to be transformed in order to reflect contemporary history and politics, and the artist's own personal convictions. He focuses on the particularity of the settings of Perth and its environments, and extends and diversifies the meanings of the original artworks in this local context."

Sally Quin
Curator, Lawrence Wilson Art Gallery,
University of Western Australia.



Thomas Hoareau: *Lavage - The Raft of the Medusa in Midland*, 2010
acrylic on canvas, 183 x 214 cm



Thomas Hoareau: *Monet's Suitcase*, 2001
oil on linen. Two panels, 76 x 92 cm each



Thomas Hoareau: *The Midland Stonebreakers*, 2010
acrylic on canvas, 155.5 x 244 cm



Thomas Hoareau: *My History Painting*, 2003
oil on linen. Two panels 168 x 115 cm each
Private collection.

Kimberley Aboriginal Artists

Tour Manager: Art On The Move
Contact Julie (08) 92427887



Sharing difference on common ground

Exhibition Details

ORGANISING INSTITUTION

Mowanjum Art and Culture Centre, Derby

COORDINATORS

Jenny Wright, Tim Acker

ARTISTS

Mangkaja Arts Resource Agency:

Fitzroy Crossing - 13 artists

Mowanjum Art and Culture Centre: Derby - 8 artists

Waringarri Aboriginal Arts: Kununurra - 10 artists

Waringarri Aboriginal Arts:

Warmun/Turkey Creek - 14 artists

MEDIUM

acrylic on canvas, natural earth pigments on canvas

INSTALLATION

47 works

60 - 100 running metres

DOCUMENTATION

Electronic invitation

Catalogue

Gallery sheets

Didactic panels

Media kit with press release

and digital images

EDUCATION

Education Packages (includes teachers notes, activity sheets, gallery/room sheet)

Lectures and floor talks upon request (subject to availability and funding)

CRATES

Up to 8 crates, totalling 6 cubic metres (tbc)

TOUR DURATION

WA 2010 - 2011 (dates tbc)

COST SHARE

WA tba

ARTIST ON THE MOVE & ARTBUS

Sponsored by Healthway to promote the Heart Foundation's Smarter than Smoking message



Kimberley Aboriginal Artists is a partnership between four prominent Kimberley art centres, aiming to share and celebrate the diversity, integrity and strength of Aboriginal culture and creativity. Kimberley Aboriginal Artists promotes the artists, artworks and activities of the four art centres, while advocating for the positive impact on remote area livelihoods enabled by strong, Aboriginal-owned and governed art centres. During planning, one of the priorities of the initiative was to hold a high quality touring exhibition, and *Kimberley Aboriginal Artists - Sharing difference on common ground* is the result.

The touring exhibition aligns with Kimberley Aboriginal Artists' core philosophy of celebrating Aboriginal art, creativity and culture from the Kimberley with the widest possible audiences. To maximise these aims, the exhibition is accompanied by a broad package of didactic information. The cultural knowledge within each painting is explained and there are didactic panels with maps, photographs and text giving audiences an overview and context of the artists, their work, their country and their culture.

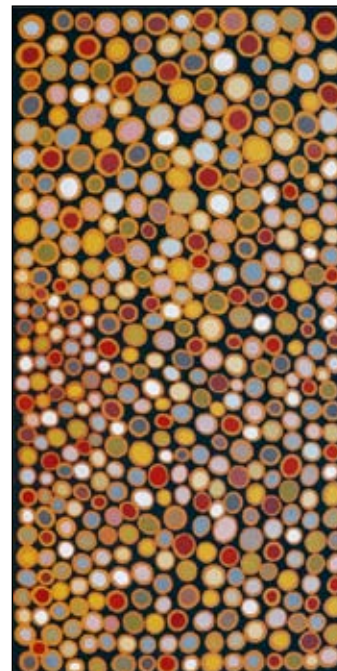
The exhibition showcases the finest contemporary paintings from four of Australia's strongest art centres. On display are works that deliver a potent message about Aboriginal cultural expression and creativity. The exhibition has a voice that is distinctively Kimberley, strongly contemporary and proudly Aboriginal.



Sandra Mungulu: *Calder & Charley Wandjinas*, 2008
acrylic on canvas, 99.5 x 140 cm



Purita Maryanne Downs: *My Country*, 2008
acrylic on canvas, 120 x 120 cm



Phyllis Ningamara: *Gerran - Stone Country*, 2009
ochre on canvas, 150 x 75 cm

Photography courtesy Mangkaja Arts Resource Agency: Fitzroy Crossing; Mowanjum Art and Culture Centre: Derby; Waringarri Aboriginal Arts Centre: Kununurra; Waringarri Aboriginal Arts Centre: Warmun/Turkey Creek

A Desire to Relate

Exhibition Details

ORGANISING INSTITUTION
Mundaring Arts Centre

CURATOR
Catherine Czerw

ARTIST
David Gregson

MEDIUM
oil paintings and gouache paintings

INSTALLATION
20 works
60 running metres

DOCUMENTATION
Catalogue
Invitations and electronic version
Poster (electronic version)
Gallery sheets
Didactic panel
Media kit with press release
and digital images

EDUCATION
Education Package (includes teachers notes,
activity sheets, gallery/room sheet)
DVD
Lectures and floor talks upon request (subject to
availability and funding)

CRATES
Up to 5 crates, totalling 4 cubic metres (tbc)

TOUR DURATION
WA 2009 - 2011

COST SHARE
WA \$2,750.00 (inc gst)

ARTIST ON THE MOVE & ARTBUS
Sponsored by Healthway to promote the Heart
Foundation's *Smarter than Smoking* message



Photographer: Victor France
Works courtesy of Brook Studio.

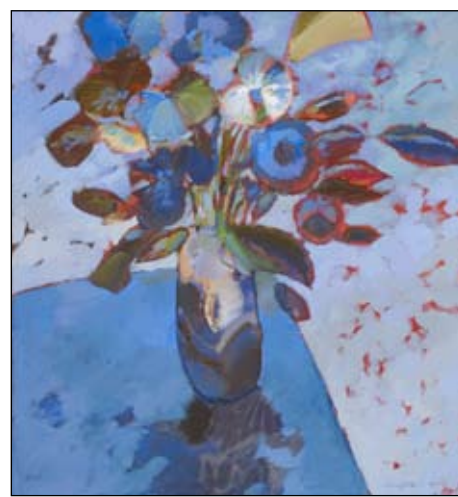
A Desire to Relate explores the life and work of an artist who has made a major contribution to the history of visual art in Western Australia. Dedicated to opening our eyes to the communicative power of art, David Gregson was a highly regarded brush painter and passionate arts educator whose influence continues to reverberate through Western Australia's art scene. Focusing on those aspects of Gregson's art practice that have had a lasting influence on artists and audiences alike, the works selected for this exhibition will reveal the artist's expressive technical skills, mastery of colour and intense relationship to the act of painting and to life itself.

Curated by the Mundaring Arts Centre, *A Desire to Relate* represents the first major retrospective of David Gregson's art since 1985, when the first survey of his work was staged at the Undercroft Gallery at the University of Western Australia. Widely collected over his career, this exhibition draws together key works from private, public and corporate collections from around WA. It will therefore provide metropolitan and regional audiences with a rare opportunity to see a substantial body of David Gregson's work, together in the one exhibition.

David Gregson's remarkable ability to communicate visual experiences in paint is matched only by his abiding passion for his chosen medium. *A Desire to Relate* presents a visual experience that will be appreciated by many - artists, students and non-practitioners alike.



David Gregson: *Provence Window*, 1999
oil on canvas, 99 x 91 cm



David Gregson: *Blue Mood*, 1995
oil on canvas, 83.5 x 77.5 cm



David Gregson: *Self Portrait*, 1995
oil on canvas, 76 x 87.5 cm



David Gregson: *York*, 1990
oil on canvas, 82 x 92.5 cm

Exhibition Details

ORGANISING INSTITUTION
Pinjarra Katijin

CURATOR
Karrie-Anne Kearing

ARTISTS
Barry Bellotti, Troy Bennell, Jody Broun, Lance Chadd, Julie Dowling, Sharon Egan, Athol Farmer, Ron Gomboc, Sandra Hill, Gloria Kearing, Norma MacDonald, Sally Morgan, Laurel Nannup, Shane Pickett, Ben Pushman, Primus Ugle, Graham 'Swag' Taylor, Richard Walley

MEDIUM
acrylic on canvas, acrylic on board, oil on board, emu egg, copper/steel

INSTALLATION
21 works
65 - 120 running metres

DOCUMENTATION
Catalogue
Invitations and electronic version
Gallery sheets
Didactic panels
Media kit with press release and digital images

EDUCATION
Education Packages (includes teachers notes, activity sheets, gallery/room sheet)
Audio exhibition guide equipment
Lectures and floor talks upon request (subject to availability and funding)

CRATES
Up to 6 crates, totalling 5 cubic metres (tbc)

TOUR DURATION
WA 2010 - 2011

COST SHARE
WA \$2,750.00 (inc gst)

ARTIST ON THE MOVE & ARTBUS
Sponsored by Healthway to promote the Heart Foundation's *Smarter than Smoking* message



The Pinjarra Massacre Memorial exhibition shows how the arts can break boundaries and a small town's history can reach a large audience. This project has come about as Nyungar people have no outlet to share this story. Through research over many years, extensive information has been accumulated about the massacre of the Bindjareb Nyungars in October 1834 in the small WA town of Pinjarra. This subject has been the most significant issue in the town for many years and through the research, continued observance of a memorial day and grassroots development ideas, this project concept emerged.

The project concept was for artists to visually interpret the event or Nyungar life before or after. Research has uncovered 21 victims by name and each artist adopted one or more of these names giving each of the 21 art works special significance. The art works that each artist has produced stand as a monument to honour that person.

The widespread support for this important Western Australian story is demonstrated by esteemed non Indigenous artist Ron Gomboc also being involved. The high calibre of artists involved in the project makes this exhibition significant on a national level.



Shane Pickett Meeyakba: *'Merega' Merega into his dreaming*
Acrylic on canvas with sand grit, 76 x 102 cm



Barry Bellotti: *Ny-atch*
Carved emu egg



Norma MacDonald: *'Geewing' My name is Geewing, remember me*
Acrylic on board, 117.5 x 57.5 cm

Photography courtesy Pinjarra Katijin

by Simon Gilby

Exhibition Details

ORGANISING INSTITUTION
Simon Gilby (Independent)

EXHIBITION CURATOR/COORDINATOR
Simon Gilby

ARTIST
Simon Gilby

MEDIUM
etched, welded steel, mixed media

INSTALLATION
10 life size sculptures
200 - 250 square metres
Display plinths (provided)

DOCUMENTATION
Colour catalogues
Electronic version of invitation
Media kit with press release
and digital images

EDUCATION
Educational Packages (includes teachers
notes, catalogue, gallery activity sheets for primary
and secondary students)
Didactic panel
Lectures and floor talks upon request (subject to
availability and funding)

CRATES/PALLETISED
WA Works palletised, approximately 12 cubic metres

TOUR DURATION
WA April 2010 - 2011
Available WA and interstate

COST SHARE
WA tba
Interstate tba

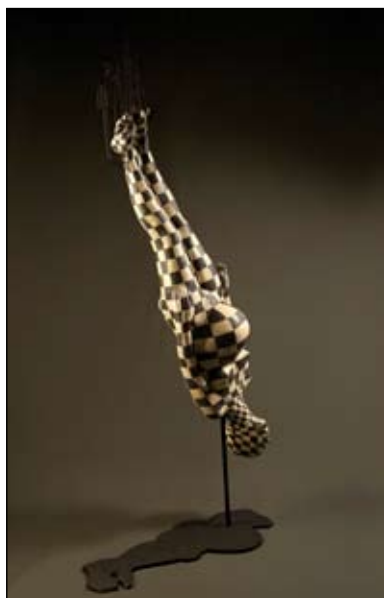
ARTIST ON THE MOVE & ARTBUS
Sponsored by Healthway to promote
the Heart Foundation's *Smarter than Smoking* message



The concept of this project was to produce ten life size figures that explore our humanity with regard to individual internal and external realities. The works reference images and text from popular culture, art history, religious and political imagery and propaganda to take the form of monuments to unknown protagonists. The works are displayed together to encourage viewers to speculate about the relationships between them.

The exhibition is borne from the financial contribution of 7 sponsors, allowing the artist, sculptor Simon Gilby, to spend one full year uninterrupted on the project. Each syndicate member effectively commissioned one or two of the ten works, without any creative control or input. Each step of the process has been documented to record the involvement of the syndicate members and the process of making by the artist.

The resulting works are intended to provoke and encourage questions about the dilemmas of contemporary life by exploring traditional and contemporary interpretations of figurative sculpture and monuments.



Simon Gilby: *Confinement*
welded & painted steel, cast pewter, cast resin, finishes
270 x 105 cm
Collection of Lloyd and Elizabeth Horn



Simon Gilby: *Corpus*
brazed filigree, welded steel, uni-joints, finishes
240 cm long, other dimensions variable
Collection of Marco D'Orsogna



Simon Gilby: *Finalist* (detail)
welded steel, brazed steel filigree, cast pewter, cast resin, winterstone, cement, finishes 165 x 80 cm,
skeleton 190 cm long
Collection of Graham and Vicki Teede

Photographer: Ashley de Prazer

ABSTRACT EARTH

Photography by Richard Woldendorp

Tour Manager: Art On The Move
Contact Julie (08) 92427887



Exhibition Details

ORGANISING INSTITUTION

Sandpiper Press
Richard Woldendorp Photographer

CURATORS

Ian Lloyd, John McDonald

COORDINATOR

Lyn Woldendorp

ARTIST

Richard Woldendorp

MEDIUM

photography

INSTALLATION

60 works
90 - 120 running metres

DOCUMENTATION

Full colour publication
Invitations for overprinting and electronic version
Media kit with press release
and digital images

EDUCATION

Educational Packages (includes teachers notes, gallery activity sheets for primary and secondary students)
Didactic panel
Lectures and floor talks upon request (subject to availability and funding)

CRATES

4 crates, approximately 3.5 cubic metres

TOUR DURATION

WA November 2009 - 2011 (tbc)
Available interstate

COST SHARE

WA \$2,750.00 (inc gst)

ARTIST ON THE MOVE & ARTBUS

Sponsored by Healthway to promote the Heart Foundation's *Smarter than Smoking* message

Richard Woldendorp is a pioneering photographer who arrived in Western Australia in 1951, and found his life's mission in the local landscape. Born in the Netherlands in 1927, Woldendorp studied painting in his early years. When he bought his first camera in 1955, he looked through the lens with the eye of an artist - an approach he has maintained throughout his career. Nowadays, with numerous books and exhibitions to his credit, Woldendorp is recognised as one of Australia's leading photographers. In his travels around the continent Woldendorp has turned his hand to many different topics, but it is his landscape photography, particularly his aerial landscapes, for which he is best known.

Although each picture is a precise record of a landscape seen from the air, these scenes have the power and presence of large abstract paintings. They bear more than a passing resemblance to the canvases of Abstract Expressionists and Colour Field painters, and to the works of Aboriginal artists. While these photographs reveal marvels of topography and geology they are also the sacred places where ancestral beings have left their footprints and stories.

Because Woldendorp has spent much of his life as a hard-working professional photographer, it has been easy to underestimate the sheer artistry of Woldendorp's aerial landscapes. His friend, the painter, Robert Juniper, has travelled in the same light planes and snapped the same scenes with his own camera. The difference, says Juniper, is that he ends up with a photograph while Woldendorp produces a work of art.

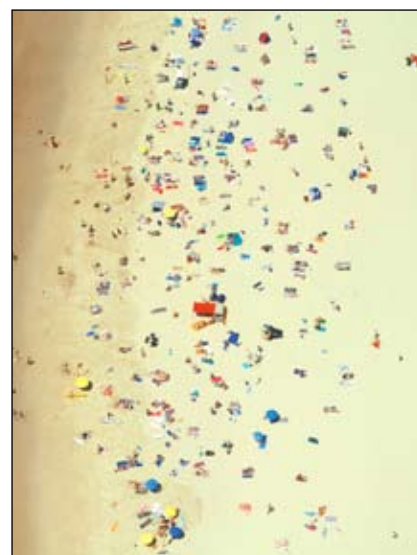
The exhibition is accompanied by a comprehensive illustrated publication.



Richard Woldendorp: *Forrest River, Kimberley, WA, 2003*



Richard Woldendorp: *Coastline between Esperance and cape Arid, WA, 2006*



Richard Woldendorp: *Swimmers on Bondi Beach, Sydney, NSW, 2006*



Drifting in My Own Land

Exhibition Details

CURATOR

Nalda Searles, Curatorial Advisory Panel

COORDINATOR

Christina McGuinness

ARTIST

Nalda Searles

WRITERS

Nalda Searles, Andrew Nicholls, Dr Kevin Murray,
Bronwyn Goss, Professor Ted Snell

MEDIUM

recycled clothing and textiles, animal fodder, hair, wax,
native plant materials, found objects

INSTALLATION

21 works, including 6 major works
150 - 200 square metres
Display equipment included

DOCUMENTATION

Catalogue (76 pages, full colour)
Exhibition brochure, Room Sheet/List of Works,
Posters, Invitations for overprinting
and electronic version,
Media kit with press release and digital images

EDUCATION

Education Packages (includes teachers notes, activity
sheets, exhibition brochure, dvd)
Didactic panels
Lectures and floor talks upon request (subject to
availability and funding)

CRATES

Up to 9 crates, approximately 7 cubic metres

TOUR DURATION

WA June 2009 - December 2010
Interstate February 2011 - January 2013

ARTIST TALKS

Available subject to availability and funding

COST SHARE

WA \$2,750.00 (inc gst)
Interstate tba

ARTIST ON THE MOVE & ARTBUS

Sponsored by Healthway to promote the Heart
Foundation's *Smarter than Smoking* message



Photographer: Eva Fernandez

Nalda Searles is a living icon of Western Australian art. For nearly thirty years she has been an innovator in the use of native fibres and found objects from the environment for the production of fibre-textiles, sculpture and installation artworks.

Her practice draws from the unique landscape of the West of Australia to express the contradictions of post-colonial identity and the complexities of her relationship with the land and its inhabitants, both Indigenous and non-Indigenous.

Nalda Searles - Drifting in My Own Land showcases new works created by Searles in an intensive period of creativity undertaken since making the decision to return full-time to her solo art practice in 2006. Drawing on her own life, memories of her parents and the experience of a number of regionally-based women she has known and researched, the exhibition is a powerful expression of identity in relation to landscape.

STATEMENT FROM THE ARTIST

I have been making work combining ideas and the materials to hand that represent the life I am to be found in for many years now. A curiosity of what has given us certain idiosyncrasies as a society that has struggled to make sense of where and who we are and how those questions have formed us. Developing skills in the handling of plant materials meant I could use the very stuff which has shaped our answers.

The tour comprises a comprehensive collection of artworks, each piece standing independent of others but the whole reading cohesively. Materials that have been used include recycled clothing and textiles, animal fodder, hair, wax, native plant materials and other found and salvaged items along with photography, text and drawing. Animal fodder, a neutral pasture fibre which Searles has been using for several years now, has colonial connotations which she sees as a metaphor for the fragility of the 'woman's condition' and the very material which is the stuff of this particular life. The artists intention has been to deconstruct, reconstruct and re-invigorate materials using well-developed skills.

The exhibition is complemented by a comprehensive catalogue, installation manual, and an education package which includes a dvd and a program of activities to facilitate an active involvement of the audience in the show.



Nalda Searles: *Hybrid Stole for a Wayward Woman*, 2008
animal fur, Mallee leaves, silk thread, 58 x 28 x 16 cm.



Nalda Searles: *Syphon*, 2007
common fodder, wool blanket, cotton thread 31 x 31 x 38 cm.



Nalda Searles: *Kangaroo Couple*, 1995-2008
woollen gowns, plant dyed silk, Xanthorrhoea bracts, silk strings,
common fodder, 173 x 56 x 36 cm and 190 x 66 x 39 cm.

Indigenous self-representation in photomedia

Exhibition Details

ORGANISING INSTITUTION

Perth Institute of Contemporary Arts (PICA)
Curator Hannah Matthews

EXHIBITION CURATORS

Replanted Kirsten Bradley
PROJEKT Video Art Archive Brendan Lee
Hijacked Video Zine Mark McPherson

ARTISTS

Re-planted Lycette Brothers (AUS) Jakub Dvorsky (CZE) 1st Ave Machine, Fredo Viola (USA) Marek Brandt (GER) PROJEKT Anne Wilson, Stephen Honegger & Anthony Hunt, Sanja Pahoki, Robin Hely, Guy Benfield, Laresa Kosloff, Dominic Redfern, Jarrad Kennedy, Starlie Geikie, Kathy Bossinakis, Gary Willis, Matthew Griffin, Lane Cormick, Rebecca Ann Hobb, Aylsa McHugh, Peter Burke, Sue Dodd, Daniel von Sturmer & Meri Blazevski, Leslie Eastman, Philip Brophy, Lyndal Jones, David Noonan & Simon Trevaaks, Brendan Lee, Christopher Koller (VIC) Grant Stevens (QLD) T.V. Moore, The Kingpins, Shaun Gladwell, Emil Goh, Kate Murphy, Monika Tichacek, Alex Gawronski, Angelica Mesiti (NSW) Hijacked Andy Simionato & Karen Ann Donnachie (IT/Aust) Candice Jee, Emile Zile, Mark McPherson & Steven Drew (AUS) Dfuse (UK), Jan Mathias Steinforth - mateuniverse, Pfadfinderei, Sascha Pohflepp, Zeitguised (GER) P. Nicolas Ledoux, Pleix (FR) Scott Pagana & Jochem Paap (USA/NLD) The Wilderness (NZL), Tove Krabo (SWE)

MEDIUM

dvd, projection, audio

INSTALLATION

3 separate exhibitions, dvd projection

DOCUMENTATION

Invitations, Room sheets, Media kit

EDUCATION

Education Packages, Didactic panels

TOUR DURATION

June 2007 - 2010

Available WA and interstate

COST SHARE

WA and interstate tba

ARTIST ON THE MOVE & ARTBUS

Sponsored by Healthway to promote the Heart Foundation's *Smarter than Smoking* message



PICA presents a selection of three guest curated exhibitions from its inaugural Screen Space program of 2006. This program offers a focused look at the rise of moving image works within contemporary culture and celebrates the latest and greatest works from artists across the globe. The program includes animation, video, digital art, multi-media, film clips, graphic design and short film, and offers a diverse range of works sure to engage a broad audience.

Re-planted - small songs unearthed by weeding

Replanted explores the possible worlds beneath our feet, in our backyards and all the way to the bus-stop. Five artists from across the globe re-plant their immediate environments with songs for the everyday.

PROJEKT Video Art Archive

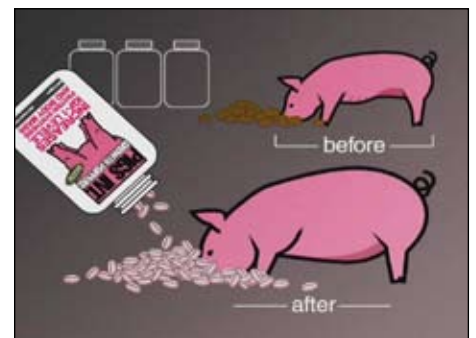
The *PROJEKT Australian Video Art Archive* is a snapshot of Australian video art works exhibited between 1998 and 2003 in commercial, public and artist-run galleries. With cultural centres now dedicated to the moving image, and most public institutions screening video art in their programs, it was felt that an archive should be set up from the grass roots level.

Hijacked Video Zine

Hijacked is a survey of contemporary experimental video works from international artists. This exhibition is a response to the human condition as sustained in a visually overloaded society, affected and influenced by the moving image, mass media and communication.



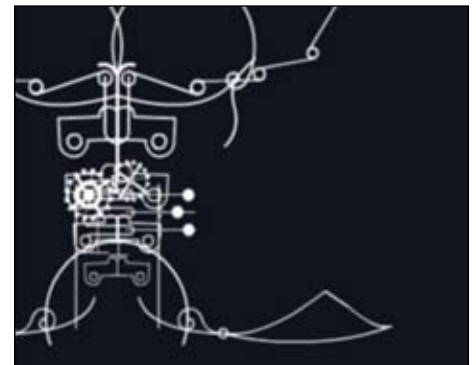
Sue Dodd: still taken from *Fears for Spears/Gossip Pop*, 2003. From the exhibition *Projekt Video Art Archive*.



Pleix: still taken from *Itsu*, 2002. Video, 3.40 mins. From the exhibition *Hijacked Video Zine*.



1st Avenue Machine: still taken from *Sixes last*, 2005. From the exhibition *Re-planted: small songs unearthed by weeding*.



Lycette Bros: still taken from *Automata*, 2004. Video, 3.24 mins. From the exhibition *Re-planted: small songs unearthed by weeding*.

EIGHT PATHS, ONE JOURNEY

Tour Manager: Art On The Move
Contact Julie (08) 92427887



Project Managed

Exhibition Details

ORGANISATION

Winding Wheel Productions Pty Ltd
www.eightpathsonejourney.com

CURATOR/ARTISTIC DIRECTOR

Matt Dragun

ARTIST

Nic Montagu

MEDIUM

photography

INSTALLATION

55 works comprising:
27 colour-toned lith prints
24 black and white lith prints
4 colour-toned lith prints (optional)
35 - 50 running metres

DOCUMENTATION

Digital invitation
27 Written quotes
Media kit with press release
and digital images

EDUCATION

Education Packages (includes teachers notes)
Lectures and floor talks upon request (subject to
availability and funding)

CRATES

2 crates, totalling 1.5 cubic metres
800mm x 1430 x 730 (115 kgs)
800mm x 1160 x 730 (120 kgs)

TOUR DURATION

WA June 2010 - June 2012

COST SHARE

\$550 (inc gst)

SPONSORSHIP

Eight Paths, One Journey regional Western Australian
tour is proudly sponsored by Healthway promoting
the *Act-Belong-Commit* message.



Eight Paths, One Journey is a 51-piece photographic exhibition by newly formed artistic team, photo media artist, Nic Montagu and curator/artistic director, Matt Dragun.

Created using a distinct documentary style approach, *Eight Paths, One Journey* explores the experiences of nine Australian yoga practitioners who have found a place for the ancient Eastern practice of yoga in their 21st Century Western Lives.

The exhibition consists of three elements; colour-toned lith prints, black and white lith prints and written quotes from the subjects of the photographic works;

The 27 colour-toned images capture each of the subjects practising yoga in a variety of urban settings. The settings reflect the multitude of external influences in the subject's lives, placing each subject and their practice of yoga in the context of 21st century western existence. Here the beauty of the human form and the physical elegance of yoga poses are captured while the intersection of Eastern practice and Western life is explored.

27 written quotes, taken from extensive interviews with each of the subjects, provide a window into their personal history. The quotes offer a glimpse into each subject's experience of the practice of yoga and their experience of life. Through the quotes the relationship between the evolution of each individual's yoga practice and their experience of their greater life is revealed engaging the audience to draw on their own life experience in relating to the work.

Finally, 24 black and white images show an artistic interpretation of the stories shared by each of the subjects. The black and white prints have been created by photographing images projected over the human body. Each projected image has been inspired by the emotions, subject matter and context of the stories shared by each of the subjects through the written quotes.

All images in the exhibition have been produced by hand and demonstrate the true craftsmanship of traditional photographic printmaking.

Eight Paths, One Journey is as much an exploration of the human condition as it is of yoga. It provides an intimate and often raw insight into nine individuals; their emotions, feelings, desires and motivations; the paths each has travelled and the role yoga has played in shaping their experience, growth and understanding of self.



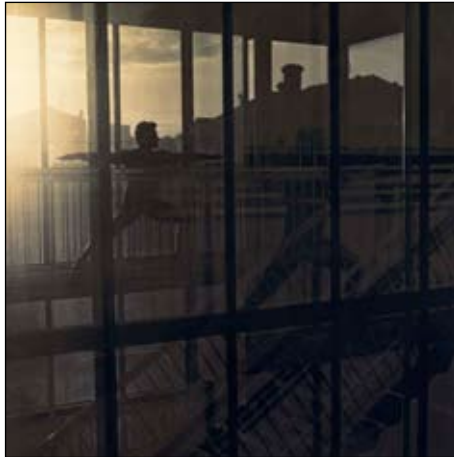
EIGHT PATHS, ONE JOURNEY

Project Managed

Tour Manager: Art On The Move
Contact Julie (08) 92427887



Exhibition images continued



Photos courtesy artist

“Every day is different. One day the practice will wrap it’s arms around you, embrace you, love you and kiss you and then the next day it’ll turn to you and slap you in the face.”

VOICES OF THE WHEATBELT

Project Managed

Tour Manager: Art On The Move
Contact Julie (08) 92427887



Exhibition Details

ORGANISING INSTITUTION

Community Arts Networks Western Australia
(CAN WA)

PARTICIPANTS

Phase 1: School children and community members from the towns of Tammin, Merredin, Kellerberrin and Quairading
Phase 2: School children and community members from the towns of Narrogin, Wagin, Pingelly, Brookton

MEDIUM

photography

INSTALLATION

50 works, framed and under perspex
(each work 35.5cm x 51)
35 - 50 running metres

DOCUMENTATION

Voices of the Wheatbelt publication
Electronic invitation
Labels
Media kit with press release
and digital images

EDUCATION

Educational Packages
(includes teachers notes,
gallery education sheets)
Lectures and floor talks upon request
(subject to availability and funding)

CRATES

2 crates, totalling 1.65 cubic metres
1220mm x 655 x 1110 (120 kgs)
1155mm x 575 x 1200 (115 kgs)

TOUR DURATION

June 2010 - June 2012

COST SHARE

\$550 (inc gst)

FUNDING AND SUPPORT

Funded by FaHSCIA and supported by Department
of Culture and the Arts and the Australia Council

Over two and a half years, CAN WA's Voices of the Wheatbelt project has been exploring a sense of place and belonging through photography in the Wheatbelt. With 250 participants taking over 26,000 photos, this is the largest community arts project undertaken in CAN WA's 25-year history.

Voices of the Wheatbelt aimed to empower the communities of the Wheatbelt to develop individual and group capacities, create awareness of their social and cultural spaces and establish stronger community relations between Indigenous and non-Indigenous community members.

CAN WA facilitated photography workshops with a professional photographer in towns across the Wheatbelt. School children and adults were provided with digital cameras and taught the basics of photography including composition, framing and effects by a professional photographer. Participants then took photos of their families, friends and towns. People in these communities had the opportunity to engage in the artistic medium of photography and be involved in something creative that also builds self-esteem, teamwork and community.

A stunning photography book from the first year of the project was published in 2009 that showcased the beauty and wonder of the Wheatbelt. The project achieved great acclaim, being awarded the Excellence in Arts Enterprise Award in the inaugural 2009 WA Cultural Achievement Awards. In 2010, a second photography book and website will be launched that features photos and visual stories of the communities of the Wheatbelt.



Top (L-R) Lisa Mackin; Cheryl Lee
Middle (L-R) Eileen Hall; Kerry Taumalolo
Bottom (L-R) Kristy Colbung; Tyrone Bennell

EDUCATION AND PUBLIC PROGRAMS



Lisa Young, Education Officer

Artists on the Move have been very busy throughout the year with a total of 115 talks taking place at 13 different venues all over the state. Overall, around 2,436 primary and secondary school students, TAFE students and their teachers have been a part of these events, experiencing artworks at first hand, meeting artists and curators and being exposed to Healthway's *Smarter than Smoking* message.



Year 4 and 5 students from St Joseph's Primary School in Pinjarra concentrating on curator Karrie-Anne Kearing's talk in the *Pinjarra Massacre Memorial* exhibition at the Prison Gallery, Fremantle. Photograph: Lisa Young.

The diverse nature of the artwork being exhibited in ART ON THE MOVE's touring exhibitions is reflected in the range of presenters who have delivered the program in 2010. Students have been treated to a number of artforms including photography, painting, printmaking, sculpture, fibre-textiles and mixed media. Amongst others, renowned artists Richard Woldendorp, Nalda Searles and Simon Gilby have worked tirelessly in presenting their artwork, ideas, themes and stories to students from many different parts of Western Australia.

Nalda Searles, together with *Drifting in My Own Land* Project Coordinator, Christina McGuinness, have travelled to five venues in 2010 to deliver the program. Despite such a



Catherine Czerw, curator of *David Gregson: A Desire to Relate* uses the late David Gregson's colour swatch cards in an activity with students from Katanning Primary School. Photograph: Courtesy of Catherine Czerw.



Nalda Searles and Project Coordinator, Christina McGuinness, ready to begin a *Smarter than Smoking* Education Event with *Drifting in My Own Land* in Katanning. Photograph: Courtesy of Christina McGuinness.

gruelling schedule, Nalda has continued to provide quality experiences for students of all ages and backgrounds.



Nalda Searles speaks to a group of attentive listeners from St Patrick's School in Katanning when *Drifting in My Own Land* featured there in March. Photograph: Christina McGuinness.

Sculptor Simon Gilby's Education Events have been met with enthusiasm from teachers at all venues *The Syndicate* has travelled to. In Geraldton, teacher David Bromley, from Nagle Catholic College, indicated that it was one of the best exhibitions he had ever taken his students to. He commented:

"The students loved it. They really enjoyed listening to an artist who was real, not pretentious and had a connection with them. Artist's language was at student level, themes were relevant and interesting, materials were new and exciting for them."

Richard Woldendorp's schedules quickly filled wherever his exhibition *Abstract Earth* travelled to. Over two days in Bunbury, Richard spoke to 9 school groups totalling almost 200 individuals. Such was the enthusiasm he demonstrated, all of the feedback received was extremely complimentary with comments such as this from teacher Brenda Della Sale from

Bunbury Catholic College:

"Richard was an amazing speaker. He kept the students intrigued and they were greatly impressed by his motivation after a long career as an artist."



Richard Woldendorp holds the attention of students from St Patrick's School, Katanning as he talks about his photographs in *Abstract Earth*. Photograph: Courtesy of Katanning Gallery.

Thanks must go to everyone who has made a contribution to ART ON THE MOVE's *Smarter than Smoking* Education Events program in 2010. Thank you to venue staff who have been so cooperative in assisting visiting artists to deliver the Artist on the Move program. Thanks also to the schools who get involved in *Smarter than Smoking* Education Events. Finally, thank you to the artists, curators and coordinators who so generously give of their time and expertise in delivering the program. It is great to see so many people working together to provide audiences in regional and remote Western Australia with quality visual arts experiences.

Most importantly I would like to thank Healthway for continuing to provide sponsorship for the program. Thank you to Sponsorship Officer Alex Pusenjak from the Heart Foundation for his support and also to Lindsay Lovering and Sarah Kepert. ART ON THE MOVE looks forward to continuing to provide an enriching component to Western Australian schools' visual arts programs in 2011.



Simon Gilby speaks to a group of TAFE students in amongst his exhibition *The Syndicate* at the Alcoa Mandurah Art Gallery. Photograph: Gary Aitken.

PROFESSIONAL DEVELOPMENT PROGRAM



Catherine Czerw, Professional Development & Training Officer

In response to requests for training from various exhibition venues around the State, ART ON THE MOVE has presented a number of professional development workshops over the past few months.

The Gallery, Ellenbrook

In anticipation of Nalda Searles' exhibition *Drifting in my Own Land* travelling to Ellenbrook, a one day workshop for Ellenbrook exhibition installers was held in our Osborne Park training room. As the participants were experienced in artwork installation, but not familiar with the ART ON THE MOVE exhibition procedures, this workshop was an induction into our touring structure, what we do and how we do it.

We focused specifically on the importance of the instruction manual and condition report to each and every touring exhibition. From a professional exhibition management point of view, this kind of workshop is essential. It allows ART ON THE MOVE to support our venues in ensuring touring exhibitions are handled smoothly, safely and to industry best practice.

If staff turnovers at your venue have meant that your exhibition staff could benefit from an introduction to the touring exhibition process, contact ART ON THE MOVE. I am currently planning induction courses for 2011 and would be pleased to tailor a workshop to meet your specific training needs.

Katanning Art Gallery

Congratulations to the team at Katanning Art Gallery who recently organised for ART ON THE MOVE to visit their venue. With the support of their new Gallery Manager Suzan Hope-Blyth, a team of seven volunteers approached the Shire of Katanning for assistance in organising an Artwork Handling and Installation workshop.

The first day of our visit consisted of a one-on-one workshop between Suzan and myself. We covered all major aspects of supervising travelling exhibitions, from gallery attendant duties through to ART ON



Volunteer staff at Katanning Art Gallery handle an artwork in a touring frame under the supervision of workshop facilitator Paul Caporn.

THE MOVE's education program. On day two we were joined by Paul Caporn and the Katanning volunteers and covered all aspects of the safe handling of two and three dimensional artworks.

The afternoon, dedicated to a practical session of artwork installation, proved to be of considerable help to the participants. While many had some experience in hanging artworks, the opportunity to learn best practice techniques proved valuable.

If you are a manager or supervisor and are interested in updating or augmenting your skills in touring exhibition management, register your interest in attending an ART ON THE MOVE workshop that is tailored to your specific professional development needs.

Bunbury Regional Art Galleries

Another pro-active approach to staff training resulted in a great turn out for an ART ON THE MOVE one day workshop held at the Bunbury Regional Art Galleries. Volunteer and paid staff with a variety of operational backgrounds, knowledge and skill levels came together for a highly enjoyable and productive PD day that focussed on artwork handling and installation.

Some Participants' Feedback:

"A great help - I have learnt very much."

"Extremely helpful in lowering possibility of damaging artworks and understanding the installation process."

"Very interesting and the relaxed style is great"

Being relatively new to this position, I am particularly interested in all the responses I have received from workshop participants. The overwhelming majority have found the course content to be both interesting and relevant, with the practical sessions that offer hands on involvement, being particularly well received.

As we look forward to 2011, I would like to encourage all ART ON THE MOVE members, individuals and organisations, to evaluate their capability and capacity to work with touring exhibitions, against our industry's standards for best practice.

Maintaining these professional standards is critical to the health and wealth of our industry. Investing the time, attention and resources to on-going professional development, both personally and as a sector, is essential to this process. So it is with intention and enthusiasm that I look forward to working with ART ON THE MOVE and its members in the coming year.

Catherine Czerw
Professional Development and Training Officer



Abstract Earth

Category A, B, C (selected)
GERALDTON, WA
Geraldton Regional Art Gallery
December 3, 2010 - January 23, 2011
FREMANTLE, WA
Fremantle Prison Gallery
February 3 - April 3, 2011
Available April - July 2011
WANNEROO, WA
Wanneroo Library & Cultural Centre
August 11 - September 11, 2011
Available September - December 2011

David Gregson: A Desire to Relate

Category A, B, C (selected)
MANDURAH, WA
Alcoa Mandurah Art Gallery
December 7 - January 12, 2011
ESPERANCE, WA
The Cannery Arts Centre
February 4 - April 3, 2011
BUNBURY, WA
Bunbury Regional Galleries
April 22 - June 26, 2011
ELLENBROOK, WA
The Gallery
July 31 - August 26, 2011
Available September - December 2011

Eight Paths, One Journey

Category A, B, C
Available September - May 2011
BUSSELTON, WA
Artgeo Cultural Complex
June 24 - July 17, 2011
Available August 2011 - June 2012

Impact and Fusion

Category A,B,C (selected)
HERVEY BAY, QLD
Hervey Bay Regional Gallery
November 12 - December 4, 2011
WARWICK, QLD
Warwick Art Gallery
February 18 - March 27, 2011

A Case of Deja vu

Category A, B, C (selected)
MANDURAH, WA
Alcoa Mandurah Art Gallery
June 10 - July 2, 2011
Available late July 2011 - June 2013

Nalda Searles -

Drifting in My Own Land
Category A, B, C (selected)
ELLENBROOK, WA
The Gallery
October 31 - December 12, 2010
ARARAT, VIC
Ararat Regional Gallery
February 17 - April 3, 2011
HOBART, TAS
Royal Tasmanian Botanical Gardens
April 20 - May 22, 2011
MOSMAN, NSW
Mosman Art Gallery
June 4 - July 18, 2011
TAMWORTH, NSW
Tamworth Regional Gallery
August 6 - September 17, 2011
ALBURY, NSW
Albury Regional Gallery
October 8 - December 17, 2011
CAIRNS, QLD
Cairns Regional Gallery
February 10 - April 8, 2012
MELBOURNE, VIC
Craft Victoria
May 3 - June 14, 2012
CANBERRA, ACT
Sofa Gallery
July 1 - July 31, 2012
PORT PIRIE, SA
Port Pirie Regional Art Gallery
August 11 - September 16, 2012
MANDURAH, WA
Alcoa Mandurah Art Gallery
December 7, 2012 - January 13, 2013

PICA's Screen Selection

Category A, B, C
Re-planted, Hijacked, Projekt
Available December 2010 - June 2011

Pinjarra Massacre Memorial

Category A, B, C (selected)
BUNBURY, WA
Bunbury Regional Art Galleries
January 14 - March 6, 2011
Available April - December 2011

Kimberley Aboriginal Artists

Sharing Difference on Common Ground

Category A, B (selected)
Available February - mid May 2011
ESPERANCE, WA
The Cannery Arts Centre
June 3 - July 31, 2011
GERALDTON, WA
Geraldton Regional Art Gallery
September 2 - November 20, 2011 (tbc)

MANDURAH, WA
Alcoa Mandurah Art Gallery
December 2 - January 7, 2012
Available January - March 2012
BUNBURY, WA
Bunbury Regional Art Galleries
April 20 - June 17, 2012

The Syndicate

Category A, B, C (selected)
GERALDTON, WA
Geraldton Regional Art Gallery
November 5 - February 13, 2011
DENHAM, WA
Shark Bay World Heritage Discovery Centre
April 23 - May 22, 2011
ALBANY, WA
Vancouver Arts Centre
June 11 - June 28, 2011
LANGWARRIN, VIC
McClelland Gallery & Sculpture Park
August 21 - October 30, 2011
TOWNSVILLE, QLD
Perc Tucker Regional Art Gallery
February 3 - April 8, 2012
MOSMAN, NSW
Mosman Art Gallery
June 4 - July 17, 2012
End of tour

Voices of the Wheatbelt

Category A, B, C
DENHAM, WA
Shark Bay World Heritage Discovery Centre
December 2 - December 31, 2010
KATANNING, WA
Katanning Gallery
January 19 - February 7, 2011
MOORA, WA
Moora Fine Arts Society
March 3 - April 2, 2011
Available April 2011 - January 2012
ALBANY, WA
Vancouver Arts Centre
February 18 - March 17, 2012
Available March - June 2012

Correct as of December 15, 2010

ART ON THE MOVE PATRON
Brian McKay

ART ON THE MOVE Committee

Regional
Shannan Gillespie, Esperance
Sharon Williams, Busselton
Michelle Slarke, Lake Grace
Stephen Smith, Dwellingup
Rachael Wilsher-Saa, Albany

Metropolitan
David Carson
Eric Sankey
Professor John Maloney
Jude Savage

ART ON THE MOVE Team
Paul Thompson, Executive Director
Julie Thomas, Administrative Officer
Pilar Mata Dupont, Administrative Assistant
Lisa Young, Education Officer
Catherine Czerw, Training Officer

