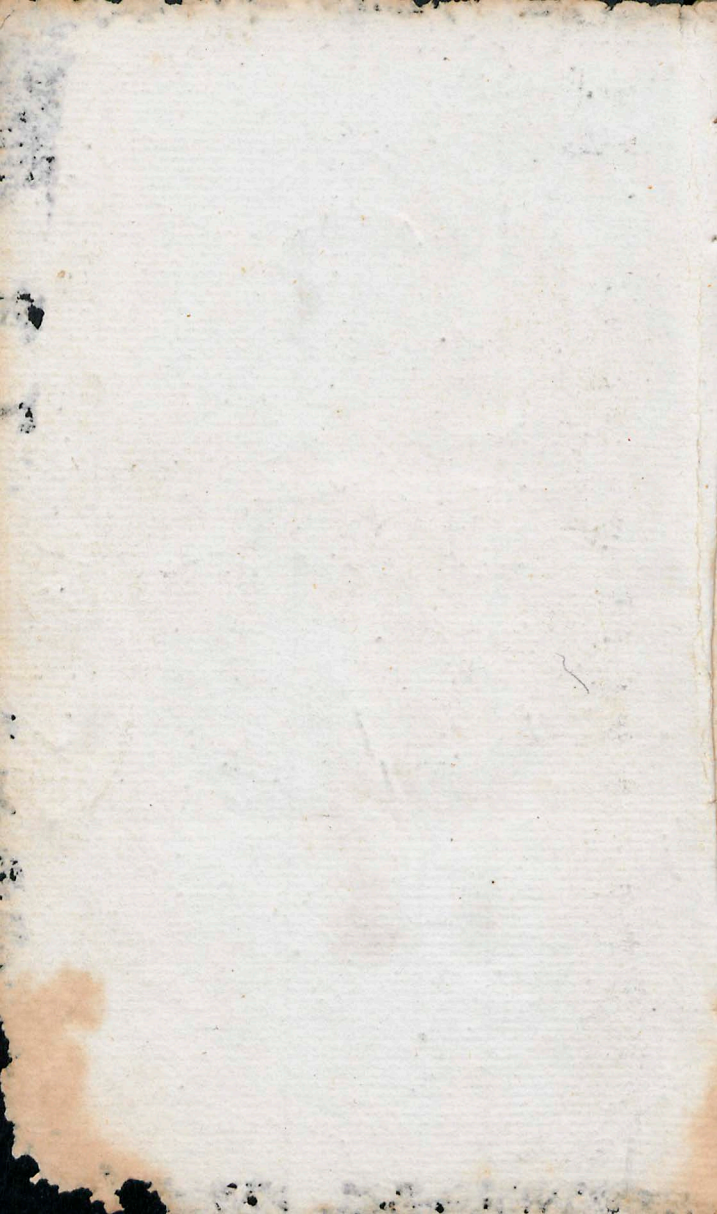


14.

2 November. to 13 Jan. 1827.

Great Bapes to Barbora.

4382a/1



Nov. 1826. Total: 0 cont. from Book 13

Hay and fuel Bays	159.55
Breakers off e as far as	35.49
e	52.50
m with breakers coming off it	49.26
l	47.5
oats dry small bold work off m. l.	46.30
a small table like on coast - not high -	{ 45.0
	{ 44.8
Sounding rocks under D. at 2 mile from shore under D.	
Small patch dry rocks $\frac{3}{4}$ mile offshore in bay	43.58
between m and e (southwest of e)	42.55
m 1 sandy isl? with rocky summit	36.55
rock off m inside sandy isl?	31.32
Elephant cent. - one 80 tons cont	29.5
like proper (?) or rolling heavy work on horizon	73.45
n - rocky isl.	25.50
Hay	21.15
m	7.35
b fish	330.60
Speaks 8 th fish	227.0
fruit	324.49
2 nd fish	222.25
3 rd off w th fish	320.20

Some rock near flag on Pt. a

Outcrop of m1	alt	75.15
Gr. Paper. broken flag alt		144.12
	alt	58.20
h		69.42
sandy, ulam off m (in line Dychidjes)		53.15
el		
m1		37.55
Subvent		10.30
m		5.35
6 peaks		333.60
Pair of 3 peaks		324.7
3 peaks	alt	322.0
in flag - 50 ft in line alt. 100 ft		110.30
in point		45.25
		16.60
a Brungals		
Portion flag betw m1 - alt		356.30
Pt. o		194.25
Further broken off D	alt	175.30

3 Nov. Daylight

Lamer at E off k (Mabayan P.)

3 peaks — [area. def. bin. - 6 ^o W. 1/2]	29	65
2 ^o left of 3 peaks		
↳ 2 ^o of 3 peaks	1	40
- W. 3 peaks — [line a high part of range]	2	34
- W. foot 3 peaks like	4	20
- 3 peaks like. 2 ^o patch — from	5	42
~~~~~ to	8	37
- " " 3 ^o patch — from	10	13
~~~~~ to	17	5
- " " 6 th patch — from about	18	13
~~~~~ to	22	40
- 6 peak	10	52
- k. W. trees — from low rocks	14	0
- " " — Summit — one low part of range	16	36
- " " — to	17	14
- W. end of summit to	22	2
- Sugarloaf	17	50
- S. trees to from	27	29
- " " — Ground level	20	19
~~~~~ to	29	50
- k. S. side of dry rocks abt. 1/2 off shore ^{of Cape}	34	16
- Whol. (mainly) in line a fall in range	40	10
- b. range — W. end	49	50

a range - from	57	24
- 1 st rise	59	5
- 2 ^d rise	61	36
- Summit	64	21
- to	70	38
a ⁱ range - centre	72	15
b1. from	74	6
- to	77	2
Saddle from	77	2
- Summit	78	12
- to	79	22
Summit (?) about	80	15
W. low extreme	at 81	55
L 3 peaks to right	1	21
to 3 peaks. ^{cont}	5	28
- 3 rd foot 3 peaks like	4	13
- slight gradual slope	18	25
- Kattapane house	13	50
- outside part of rocky slope	11	45
- a rocky bump	13	0
- a hole	25	56
- m	50	50
- hole	31	52
- S. end range	8	55
Round Hill		

3^{km}

- Summit Summit at East End — 35 23
- - - - - 34 14
- Table low of e — } 39 51
- - - - - } 40 25
- - - - -
- Churning tide? about — 41 10
- - - - - 41 - 27

am sight P. h. E.			
Times	Alt OR + 28	W	7. 6. 0
7. 2. 24 — 16	19. 40	957)	12. 28. 17
3. 3. 5	39 35	598)	10. 19. 21. 5
3. 41	58 20	589-	10. 33. 55

From the E.S. of the island the Superloaf appears



- 7.30 looked from E of K. H. then west
- Shearhills over Summit K — K 2 1/2 W
- Top of peak b. on Superloaf — K 20 W
- Pallahane - above right of Superloaf — K 29 1/2 W
- to peak on Superloaf — K 16 1/2 W
- in over Pallahane — K 33 W
- to peak over W. end Superloaf hills, + a very ft. — K 15 1/2 W
- Superloaf under 2nd mountain — K 12 W
- look over K. Summit of 1st trees — K 32 1/2 W
- K. 2nd trees about 1 1/2 to left —

3rd Nov. Am.

Round hill over separation between 2° 13' } 268
hatch of 3 peaks hills _____

m. over outer (calves 2nd) rocks off K _____ 256 1/2

Elephant over Do _____ 260 1/2

m. over K mountain (a little shut over) - 260 1/2

E. end to peak range over 'end' of range of hills - 250

W. end high table terrain to over a rocky projection 220
of which are heavy bushes.

Note - The coast to 16° is nearly a line of sandy beach
with occasional rocky intermissions. Low Mahajan
1" (1/2) above High tide water from the shore more than
a mile. In some places apparently about 2 miles.

16. 9.50 SW6W.. 16. 15 3/4. 16. 9.54 (2.8.54)	
2.8.50 Adams peak _____	267 1/2
Elephant - (its nose on with m) _____	265 1/2
Knockdown _____	288 1/2
Saddleland _____	285 1/2
b. m. m. _____	266 1/2
high _____	240 1/2
high flat W end m. b _____	219 1/2
b. peak _____	290 1/2
imperial - over a low coast Do. long sandy beach.	235 1/2 cont?


9.54 Am cont?

- Roundhills (hills to right of SWnd 3 peak patch) ————— 2128
- 3 peaks ————— 222 1/2
- hills ————— 237 1/2

17. Two post saddle hills on Blackhorn ————— 285W

Left (Summit near Shew) over in ————— 246 1/2

17. Saddle summit on Blackhorn ————— 282 1/2W

16 1/2 a haycock hill on W^l foot Sugarloaf  ————— 238

9.30. 18..

E. summit - SW of K ————— 250 1/2

Blackhorn in line separation saddle of 6.1 ————— 280 1/2 W

K summit of E. tower ————— 247 1/2

3 peaks ————— 223 1/2

Sugarloaf ——— sun low ————— 23 1/2

Roundhills ————— 210 1/2

6 peaks ————— 210W

flat summit & range - W. end ————— 219 1/2

over hills ————— 244 1/2 W

to summit a ————— 267 W

Rocky groups between 2 sandy beaches ————— 286W

Small hills ————— 205 1/2

Rocky S. point ————— West

17. Blackhorn in line N. end to range ————— 276W

3 Nov. 1826. Alt. 9.45. 17 gravel

Blackhouse in line a $\frac{1}{2}$ —————	274 $\frac{1}{2}$ W
light - a little left of black —————	210W
capulsoaf —————	26 $\frac{1}{2}$ B
3 peaks —————	224B
meant land - 5 inches —————	245W
Sand of coast. projecting between —————	224B
—	+ 2°.

Stems range a - in line Blackhouse 272W

10.36. 15.

Blackhouse under meant range a (white) - West (white)

10.36.

Round hill over capulsoaf —————	215 $\frac{1}{2}$ B
6 peak —————	24W
Blackhouse —————	215W
— 2: trees —————	211W
3 peaks —————	229 $\frac{1}{2}$ B
Range a ————— from —————	247W
— ————— to —————	268W
— —————	268 $\frac{1}{2}$ W
a $\frac{1}{2}$ —————	276W
Saddle point —————	28 $\frac{1}{2}$ B
Haycock hill —————	286W
a. Low point —————	259 $\frac{1}{2}$ W
only pt. 99 20 —————	265 $\frac{1}{2}$ W
a sandy S° pt. (low? of which is a bay) —————	279W
120 feet difference - small point —————	279W

Coal: 10.36

Low peak. (1st time out as usual) ————— 281W

Haycock hill a little left of Blackhouse — 2108

Round hill over Blackhouse ————— 2166

High point over Blackhouse 28 ft. ————— 2208

11.15.15

3 peaks $\frac{1}{2}$ mi right of the present (2nd) patch of hills. 2328

High point ————— 2208

Blackhouse ————— 2208

Round hill ————— 2186

b. peak / cloudy / ————— alt. North

Low part W. of b. peak ————— 216W

only projection in part ————— 215W

1 story hill ————— 220W

Sand falls away to W. further - at alt. 2306

bright cliffs under summit range a - 2506

Clear shot of land ^{aligns to W. of 7.} ————— 2466

b. range - for ————— 2606

to ————— 2656

Saddle summit ————— 267W

W. end ————— 269W

Small summit ————— 270W

Light Column with off shore. to about 2 miles inland

Low peak ————— West

11.24. W. P. towards 1st col. with 35 sand.

3 Nov - 1826 - 11.29. W. W. 3/4 on edge of l. col. water entirely
 from shore. obscured by fish spawm. 6' 0" to 2'
 Mochbourn Sept. on with W. end 3 beaks like 225th

11.39 - W. S.

3 beaks over its W. S. side	_____	233 th
Mochbourn	_____	229 th
W. end 3 beaks like	_____	228 th
Ingaloo	_____	222 th
6 beaks / Clouded	_____	ab. 218
Sooty Summit	_____	267 th
61 S. W. trees	_____	265 th


Q. R. 68.51.45 + 28. Q. W. 68.56.0
 (watch 10 min. show. all? it) 1.30
 68.57.30

no on board?

Low peak	_____	ab. 289 th
? Low summit under end.	_____	ab. 286 th
Small Summit	_____	271 th
Sooty Summit	_____	266 th
61 - from	_____	266 th
- to	_____	258 th
range - summit	_____	244 th
from	_____	258 th
to	_____	233 th
propetry of	_____	218 th
Ingaloo	_____	215 th

cont?

Wood Coat?

3 peaks from	_____	2308
- Summit	_____	2368
- t	_____	2378
Blackhouse	_____	2388
Windy Pt.	_____	2148
4. peak <small>(under hat & range)</small>		278
6 range 2. and	_____	288
6 peak	_____	228
Offshore - 7 or 8' -	tw ^d _____	2106
W. extreme - ab ^t	_____	2826

E. end 6 range abt. left of a high point	_____	2128
4. peak - just clear of 6 range	_____	2148

Summit range a. over passage	_____	2396
------------------------------	-------	------

12.34. W. for Sausale.

Sausale	_____	2726
Seoole Summit	_____	2576
range a, Summit	_____	2376
6 peak	_____	278
- E. end range	_____	2138
4. peak	_____	2148
3 peaks	_____	2428
a 88 woody point	_____	ab ^t 2358
mount low. a sandy high ^t - ab ^t 6	_____	ab ^t 276

Story hill over to' and a part. very rocky to 2' - 21798

1.7	1900s rocks healed top - outer end	2770
	W. extreme	2740
	a hopity woody V.	at 2790
	Low ruins	2780
	Sanyakhouse	2700
	Right	2670
	Emaksumit	2590
	Saobletumit	2540
	to - from	2690
	- to	2430
	Summit ramp a	2310
	a light with sandy prop. Honaheracabra	2110
	all sandy prop	at 2230
	3 peaks	2480
	off sandy show - at 5 miles	ton. 2480

Alt. Co. Falls -

	Low foot saddle hill over Sanyakhouse	2550
	Saobletumit over	2670
	to and to over	2340
2	W. end	2800
	old rocky top	2700
	the blanket here	2700

2 Blue coal?

Written _____ 2716

y. 20 _____ 2576

u. had _____ 2536

Written _____ 2662

a deep small high room 2' wide 8'

2 from _____ 2386

high _____ 2356

to _____ 2316

small room _____ 2406

Look from _____ 2566

from _____ 2336

to _____ 2302

to from _____ 2302

to _____ 2236

a high 2' H. _____ 298

Tangate house _____ 2152

Dead _____ 2822

34 Low peak over written _____ 2386

3.8. _____ 2498

Tangate house _____ 2408

y _____ 2408

written _____ 2408

at ^o prop. part Michael	u6
a S. prop. rocky pt	u65
prop. of rocky land - a part - all	u328
a S. prop. rocky pt	u338
a S. prop. rocky pt	u288
cliffy prop. in bottom of a bay	u238
a S. part (W. of above light)	u228
Low beach	u198
white rock abn. of shore	u68
a S. pt. of beach part rocky pt	u88
a W. rocky pt. - a narrow beach of	u68
a small prominent rocky pt	u48
a point rocky pt. on beach	u48
carb. part	u58
a very low rocky pt.	u118
Bottom of light	u98
in cliff opening of Dhead	u98
Dhead - S. part	u58
a small S. prop.	u340
a S. prop.	u340
a S. prop.	u340
stone to W.	u740

u6 - about 3 or 4 minutes were occupied in the above being done which time the land appeared part. 100; the same

3.12. west-

3.27. 27- coe sa. shales-

Shed - Western _____ K245W

- S: ten _____ K255W

o. cliffs _____ K36W

Western - (101) _____ K725W

2 No. 1. nearly in line _____ K71W

Strait (61) _____ K28

E. winga Strait (Saddle) _____ K018

^{Saddle} Strait _____ K02W

o. cliffs _____ K158

o. 3 - 1 fact _____ K201

o. 2 1/2 _____ K201

a point in a light - 1 point _____ K318

2 No. 1. " 51 _____ K408

Natural top - cuts str. (Langah shales) _____ K598

Saddle Strait over Shed S: ten _____ K118

61 over Shed S: ten _____ K48

Saddle Strait over Spring (Blk. & Stanton) _____ K128

W. o. Shed _____

3.62 4: coe sand _____

Shed - S: ten _____ 3 1/2 miles _____ K168

o. cliffs _____ K142W

1st set of str. 3/4 of way in the outlet / abt. _____ K69W

3 other points to SW. of it. in line - trending toward a dyke at _____ K74W

Natural _____ K588

3.65 hauled up str. by wind short tail. _____

3 Nov. 1865.

4:22. Wore Altamira?

4.85

W. stream ————— 468[±]W

S. stream (cut and level top) ————— 464[±]S

S. W. — D3 ————— 450[±]S

Low peak ————— 439[±]S

S2. a bar ————— 466[±]S

D1 — S6. ————— 439[±]S

D. head S. trans ————— 438[±]S

Wright ————— 435[±]S

W. cliff ————— 43[±]S

Doubtful J ————— 49[±]W

D. appears to form S. head of stream back on hill
town in situ

Heating house (white, low. spec in box) — 411[±]W

4.49. Off Altamira, miles at NW — 42 feet.

Red cliffs a ————— 46[±]S

Pt. 2.3 ————— 467[±]W

A very prominent S. Pt. ————— 458[±]S

Low. not so prominent ————— 457[±]S

level top ————— 467[±]S

Co. very variable off Altamira Bay. No. the right

W. 105.

4 Nov. 1888

5. 68

(599) 8

Matura - 10 miles

U 208

D. head

U 108

Am P. k. off Matura.

Time taken @ R + 28.

61 - 8 - 19 - 30

8. 23. 58 39. 59. 10

917 - 14. 5. 30. 5

24. 35 40. 6. 55

598 - 11. 56. 37

25. 8 - 14 40

589 - 12. 11. 2

8. 30 (Mag 28)

(Col. 5. 53. 50 U. Low 80. 35. 208)

Saddle point

U 114 1/2

61 - from S. end of point

U 158

to head D

U 15 1/2

to cliff point

U 36 1/2

D. head, 28

U 62 1/2

51 p.m. spec of D. head

U 62 1/2

a 28 ft. point

U 66 1/2

2. stream abt. (tree tapping) (C. nitidifolia)

U 67 1/2

Low peak?

U 68 1/2

Low point?

U 40 1/2

a rocky point

U 61 1/2

Matura house

U 20 1/2

low. (Doubtful?)

U 21 1/2

abright

U 10 1/2

Small Table from standing alone



U 15 1/2

2. 20 ft from the P. as 22. showing the bottom

6900. 8.30 cont? (at at last! 215' W. corner line with a dist. both
(low saddle saddle which opens up again)

a peak (a) 2550

Peak 2° of S 2650

S. W. 2680

W. 2690

S. W. (gradual) 2700

a no pt. 2750

at the cliff of B (B1) 2750

then no cliff B (B1) 2750

W. extreme of the toping this here - alt. 2750

waters under 6' foot saddle here - alt. 2750

Saddle summit under high flat summit (range) 2900

o. diff under separation between saddle & B1 - 2900

alt. saddle 8' foot is about a degree to right. B1 W. foot ^{about same height}
of cliffs. being shut in behind saddle

o. cliffs under high flat summit B 2900

Saddle 2° to left. 2900

Small summit over o. cliffs 2900

noon. very cloudy. and over all perhaps not very nice.

② R 68.41.50. (R 68.41.50) for alt. 2935

o. cliff 2935

2935 summit 2935

2935 - S. W. (flag) 2935

4 Nov. noon cont.

W. summit bc under E. end high flat summit b	2108
E. end summit bc	2128
Small table (2.2)	2162W
W. end high flat summit b	2178
b. E. end (gradually rising in broken ridge)	2178
Doubtful S	2010
Melina house	215W
? Low peak	2198
? Low summit	2288
Shiny top of limestone (large) - abt	2558
S. Summit to base	2410
S. end	2440
N. house	2452W
W. stream - abt.	250W
Peak a	2286

2.50 by wires to W. -

Low summit N. on ahead (sky after) - 2658
 rocks extending farther out - and broken outside the rock

4.20 P.M. P.K.

Cliff v	2110
Saddle summit	282
W. E. foot	2118
E. patch v cliff under W. foot (with)	2118
Small table (1.2) (Pole hill of Chant)	2176

4 Nov 4.20 (the coral)

6-0000 2.10

B-head - S. trees (1/4) ab. 42678

Low mark ? 42688

St. ? 42698

Station 6? 42708

S. Summit 42718

Station 6? ab. 42728

Peak watch. also 20+28 cloudy light 1? low.

4.22.32 — 12.53.00 W — 4.30.20

4.25.50 — 12.0.5 957 — 6.18.55

4.28.31 — 11.56.50 598 — 8.10.2

4.29.05 — 11.48.25 589 — 8.24.23.5

86 — 171.20 watch about 30 slow for 5.

4.26.287 11.57.7 Cal. ab. 5.51.30 to 20.40

5 Nov.



7.50	Adam's Peak	K 118
	Peak a	K 48
	Snake table	K 118
	Haycock	2 11 26
7.55	for Alm. Pk. (head work)	
	Adam's Peak	K 528
	Peak a	K 58
	Snake Table	K 28
	Haycock	K 126
	Saddle table	K 308
	Saddle b	K 308
	High flat Saddle	K 218
	to cliff	K 608

immediately after

Adam's Peak over Peak a K 128

Alm. Pk. watch	⊙ R + 28	
7.57.23	31.38.0	W. 8. 1. 15
.58.18.5	31.50.35	957. 1. 32. 2
.59.48	32.11.30	598. 11. 29. 10.5
		589. 11. 43. 25.5

Haycock + Haycock (near chart) Lat. 5.52.50 N. Lon. 80.28.20 E

Red L. under the foot b1 K 358

Red L. under Saddle Saddle K 358

Red L. under b1 Saddle - would probably be K 358

K. 2386 is a mixture of b1 - appears in the same manner

high like and low, under b' summit — 2398

b' summit is towards its W part.

b' summit and saddle summit form saddle like of charts standing detached from any land near them of elevation

proportion like airt^o. under saddle summit — 2412

So has many rocks & boulders on its incline S' side

Peak a - a little left of a dup height (S. 94) — 2198

Saddle summit over the red high like airt^o — 2428

9.40.

Return toward Dhead — ab' — 2848

a 7° wooded pl. — ab' — 2832

v' 28 — 2792

- summit — 2678

b' 28 — 2738

s the trees and cliffs — 2732

- a part red cliffs — 2748

B. cliff of trees — 2702

Red red. — 2628

high like airt^o — 2552

saddle summit — 2428

b' summit — 2402

high 2° of r — 2332

r. a part - ab' — 2218

9.40 Cont.

Peak a	U238
Small table (knob at summit)	U118
Key rock	U46W
along rocky bandy S.W. point	U32W
f. SW	U60W
False flat top	U41W
a SW point	U47W
Knob of ls. at summit (sharp)	at. U49W
a SW point	U49W
Below - at. (in line part of f.)	U39W

Ats. some dry rocks lie off r. and there is a small opening on its knobby round to left?


9.43 for 2nd Am. Lk.

Saddle summit	U45E
61 Summit	U63S
Peak a - summit part r. W.	U26S
Small Table	U12S
False notch	U30E
f. SW	U40W
False flat top	U41W
a small high rock off r.	U32E
Small opening on r.	U31E
High	U45E
Key rock (on bottom of a high W. of r.)	U22W

U45W = Key rock just above water level for light

9 55 4.5 - 56 58 20 - Watch - 9 51 0
 55 45 - 57 1 25 - 9 59 - 5 28 12
 56 14.5 - 6 45 589 - 1 20 28
 2^d Am rights - for Lon. Haycock - { 5.56.35 27 }
 { 20.23.10 }

B. Row of chips in line in part - 33 - 2061

11.
 2. Extreme - (1st) - 28626
 at^o. W. - (3) - 28726
 22 - in part - part
 B1 chip - S. trees - 2868
 B1 chip - S. trees - 2858
 Red Yed - 28226
 Proj. like amaranth - 28726
 Saddle point - 2898
 61 point - 2878
 Paka - 2868
 Grand Cairn / Sand, but this has a peak with 2898
 Small table - 28726
 Haycock - 228
 Lake notch center  - 2206
 f - from - 22626
 - to - 2306
 Lake flat table - 22026
 W. when - at - 2876
 dog-skeleton a rocky prop. between 2 beaches (12) 2226
 Haycock small. trees for - 226

Smaltable over f2 center	U202B
Haycock over E. end summit fb	U5B
Mallows in line W. side fb	U6th
Haycock over W. side fb	U7B
Smaltable over E. of f1, f2 summit fa	U22B
D. over W. part f1	U222B
Haycock over E. side fa summit	U6B
Note - "Galle notch" in furrows between fa and fb	
Smaltable over Mallows. and W. line f1	U222B
a high flat summit b. about 2° to left of peak	U222B
Smaltable over W. side fb summit	U232B
Bellows in line E. end f1	U69B
Smaltable over E. side fa summit	U26B
fb in line E. side fa	U242B
^{no obs. at noon} f. 2B in line W. of fb	U322B
Haycock over W. of f	U82B
12.5. from W. side. all to W. side.	
Haycock over Hoppenburg	U9B
W. fb shutting in between E. of fa	U32B

17 - 12 8
 f - M.W.
 - S.E.
 e - 9° or 8°

5 Nov. 12.8 cont?

- 17 lake flaytall _____ 21620
- inhabitable over the of f - a row } 22526
- 16 half shore of a near range - _____
- Co. variable for 21. 1) - _____
- Return - 20 in line hollow (breaks outside this) } 27826
- 15. 16 Res. hill on with extreme. _____ alt. 27728

- 12. 24 Rounded to - 132. E^d of lake in head S^W - after evening.
- whole rock _____ 2696
- a very small rock just awash E of beach } 2506
- Extreme (at h) _____ 26626
- a few ft. (192) _____ 24526
- a small pebbles dry rock (N^W of 3) _____ 26326
- above point (191) _____ 26026
- a no. small ft. _____ 23426
- a red slight proj. ft. _____ 2226
- W. rocks of lake P. _____ 2116
- W. baction - lake fort _____ 276
- lake flaytall _____ 1/2 mile _____ 2426
- Pigeon rock (20) _____ 278
- E. wall. lake fort _____ 21526
- Haycock _____ 226
- Cook's home _____ 2226
- St. day rock off lake fort _____ 2226
- Head break. of B^e _____ 2226
- main line on beach _____ 2226

Gibbet I. from	2318
to	2358
Hollenbury from	2602 1/2
to	2628
f. 2° line - or Abcoome Bay	2538
Sphenobone	2598
f. line from	2648 1/2
a part $1\frac{1}{2}$ mile	2658
to	2668
a part of line f	2728
f. 3° line	3858
Cape each off f 38 ^(in line a mark light bottom of 1/2)	3828
^{to height to 20° of low point}	
White ash of f 30	3808 1/2
f. (e.s. of 1/2 line) ^(a.s. of 1/2)	3808
Red l ^o	3768
Return of main ^(cont. B or d)	3758
a 30 ft ^(2. r)	3758
Fallow	3718
Outer wharf of Wrecker	3708
Shole's mainmast	4858
Lawson's mainmast	5718

The eight at 2.

Watch	② 2 + 28	W - 3 - 43 - 0
38. 37	27. 42. 20	957 - 9 . 14 . 26
38. 49	27. 19. 20	598 - 7 . 5 . 35-8
		589 - 7 . 19 . 48

By Adm^l. Chas. Labros. in 6.0.20 & Lon 20.17.55

7405
 Lower Lakefront - with curve of
 outer edge of breakers of f. (: Below) - 128.496

f. North	_____	123.22
f. SW	_____	122.56
- high air of	_____	120.41
- Proj. part	_____	117.7
- high	_____	115.2
- high	_____	118.48
f. NW. from	_____	107.56
- " " to	_____	105.55
- " " to	_____	104.20

a sandy beach between 2 Proj. high water
 from 101.34
 to 97.3

Orphan School	_____	89.42
high	_____	95.12

f. N.E. or W. corner of Lake Bay - 80.20

nearest part of a pier	_____	82.38
Dopenburg	_____	67.33
	from	63.48
	against part	62.21
	to	62.11

Jibbet I	_____	62.11
	from	57.9
	to	57.9

SE. breakers of Lake front - about 124.6

SE. breakers of Lake front - 120.28

St. barton plateau - etc.	70-25
So. face of plateau running parallel to D	
So. bluff face of a very high dist. range	
very dist. high inland summit	63.6
Plateau saddle	59.25
Summit of a high long elevated range $\frac{1}{2}$ m. from	49.28
	to - 35.3
Mark table from	30.58
- " hub -	30.18
- " to	29.25
? a 2 from	20.14
- " to	21.34
Haycock Summit	13.17
Antiquen Chapel - center - base	353.5
St. barton plateau	306.20
St. barton D.	309.3
So. face of foot being parallel to D - from Haycock	
to base of V in height (some rocks of it) about	317.30
West edge - end of trees	305.9
Whole ref. out	272.53
? (Even in line 22)	
Whol E - Head Whol	202.7
Pandora E	175.52
Tam E	182.4
Wash E - Wash	165.75

8 Nov. at daylight. clear over the land - took from Main tent
 [to Kaycock to right - (and west)] the following -

to Adams peak	5.9
- 1 st small peak from a.p.	4.36
- 2 ^d " " from a.p.	4.15
- small high table. on Adams range	8.29
	8.42
- a very high peak (?) true Diatlova /	11.57
- E. end D. range - (fall of ridge)	13.16
- small table. from	15.41
	16.45
	17.0
- a sharp naked hill (? beyond Adams) above	1.54
- Summit at W. end a very high sloping piece of	20.26
table land - far inland	
? highest part range to	25.33
? high flat summit range to - from	34.23
	35.31
to left of Kaycock -	1.45
to Young Kaycock	8.68
- pale flatt	
- - outer reaches off D. - from	3.31
	7.28
to top of bushes	8.16

Am rights. at fake flapstall

Before rights-

After rights.

957-	2. 5. 30	9. 51. 16	3. 27. 0	10. 51. 16
598-	11. 56. 66	0. 13. 48	2. 18. 16	0. 13. 48
589-	12. 10. 32		2. 32. 15	

Since 957-

⊙ R + 28 AE

2. 52. 60	—	96. 67. 35	} a
53. 9	—	96. 58. 55	
53. 37. 5	—	97. 10. 30	} b
54. 1	—	97. 20. 15	
56. 23	—	97. 29. 50	
56. 17. 5	—	97. 39. 65	} c
55. 19	—	97. 52. 35	
55. 55	—	98. 7. 10	
56. 24. 5	—	98. 19. 35	

⊙ low. moon, at fake flapstall - height of eye 35 feet

⊙ R on sea hor: 67. 20. 25
+ 28

moon. at L in fake head (true bearing already given)

⊙ W cor? 67. 20. Fulford. 67. 22. 0

8 Nov. 1926

at Lake Platte - cont.	
↳ to right of haycock	
To highest part of range	26.16
- table summit to	34.55
- " " " "	35.32
- part to summit?	47.32
- Saddle summit	50.0
- Adams range - W. end of mountain ridge	3.10
- " " " 2 nd small peak from W. side	4.6
- " " " 1 st " " " "	4.30
- " peak - all	4.54
- High dist. table - from	8.20
- " " " "	8.39
- Sharp headed like	1.38
↳ to left of haycock	
To young haycock	1.56

9. Nov.

at 10.20 weighed from S. offake.

Saddle mount over N. ¹⁰ trees f ————— 2618

11.3 - W. N. ¹⁰ N.

dit. P. opening of extreme (10) ————— 2352

Saddle mount over Portym Church Lake 2628

Lake ~~mount~~ over what reef (out) — 2138

Laycock over out what reef — 2198

Young laycock - over D. probably — 2168

Small table (knob P. of center) over out what 2348

Saddle mount over New rocky trees Lake¹⁰ — 2658

Out what reef in line between from ⁽¹⁰⁾ flat 2678

Salesaddle like over Red P. in light to offake 2638

at center over out what reef — 2618

Salesaddle over D. ————— 2638

Small table over a sandy dip between 29 by 15. 2368

11.32 - W. N. W.

at summit (near W. W.) over extreme for ⁽¹⁰⁾ flat 2608

D. over a prominent rocky P. with a ⁽¹⁰⁾ summit 2658

— (2.92)

9 Nov. 1900 - D R 66 59. 55 + 28

Calufluytall	8019	2536
Sasobekimil		2686
ht. summit		2648
Smaklatth		2638
Haycock		2298
Young Haycock		2268
Paps		2208
Mount Point ^{Frenchy with village} (26092)	east low rock off it	2168
Peak of it		2098
Return dist. (26501)		2088
a cliff		2098
a very high pt. No. 1261		2188
P: off which arch hill (14)		2168
East of them		2768

Haycock over village ^{Frenchy} ₍₂₉₂₁₎ 2328

12.40 W -

Smaklatth under highest part of roof - 2538
To see rock off it -

1.5. 1612

Paps over i W (174) 2338
Sasobekimil over ab. with rock off (174) - 2088

1.9

W. W.
Smaklatth under ^{Frenchy} _{Smaklatth} 2638

Pipe over <u>highest part</u> of l	2551b
Haycock over <u>the</u> [?]	257b
Small table over <u>SE</u> of i [?]	265b
highest part b. over <u>Do</u>	261b
Pipe at <u>left</u> of l house	235b
Small table over <u>SW</u> of i [?]	268b
Sales table over a <u>high</u> S. P.	585b
Pipe over <u>prop</u> [?]	238b
Haycock <u>South</u> of l	263b
Do. over a <u>sandy</u> high on l	263b
Haycock over <u>l</u> house	265b
Do. over <u>the</u> of l	265b
Do. under <u>highest</u> part b range	266b
Small table (center) over <u>l</u> house	269b
Sales table over a <u>prominent</u> part of k	583b
Small table (center) over <u>traced</u> (center)	271b
2. S.P. <u>system</u>	586b
a <u>sw. woody</u> prop	587b
Prop. <u>land</u> of k	588b
l. <u>50</u>	589b
l. <u>50</u>	590b

9 Feb. - 2 P.M. cont?

l. u. tern	_____	2886
solitary	_____	2778
Smal. (clouding)	_____	2756
Raycock	_____	2708
Young Raycock	_____	2678
Small	_____	2688
Wood's	_____	2638
Staple	_____	2618
B. E. L.	_____	2608
l. ultimate	_____	2608
l. 26 feet (Western)	_____	
Admiral	_____	2698

Sounding after? coming alongshore to N? but no bearing or data by which to lay them down on chart
 at 10.20 E. in Colombo Roads. in 7th f. search:

10 Nov. 1826. E Colombo. 9th of 12. sh:

from Marblehead. (had 8^o)

4. Colombo flagstaff to left

To Haycock ————— 7.23

• ? Peak ————— 11.17

- a very high piece of tableland (too high for mate's ^{alt}) 15.42

• a peak near D^o - but higher ————— 16.22

• a very high inland peaked round hill (? Drath) 33-43

4^o D^o - cont^d from Deck -

To a high peak (1st or 2^o) on Adam's range — 41.32

To Adam's peak ————— 42.45

- View on Adam's range - (alt of ridge) — 47.37

• S^o view D^o ————— D^o — 39.18

• D^o ————— D^o foot of ridge — 38.15

• Key's Peak on fort P^t ————— 2.20

• Alt patch D^o ————— 10.0

• Pt of turning to land in Wharf (Custom house exit) 15.57

• Peak in dist. low coast land ————— 137.22

• Alt extreme - (two just topping) - alt — 145.34

• a low point ————— alt 140.00

• Lighthouse Colombo ————— 0.26

4^o Colombo flagstaff to right

To the rock off point — extreme — 3.54

- Sw bastion off fort ————— 5.32

- outer dry cock of Dumbar Sailors — 5.40

• a lay house on right propⁿ ————— 0.6

• a sandy low light to S

10th Nov. 1826. L. Colombo Flagstaff to right. Corral.

To Subbarina

S. extreme $6\frac{1}{2}$ or 7. 21.0
21.62

- calc. obj. of beakers off Colombo Pt. 25.51

- Small lapping as if in shoal water about

farther out - about Eastward - about 3 miles

Projecting rocky Pt. - 4. part - 4 miles 26.52

Colombo Flagstaff $2\frac{1}{2}$ (at Co. bef. bein. h. S. S.?) 33.82

at head at E (head S.?) $\frac{1}{2}$ mile 26.62

Pandora E. (S.?) $\frac{1}{2}$ mile 25.92

10th Nov. - Cabra -

O. R. 65. 68. 25 in diff. hour.
+ 28

11 Nov. Old Arina - R. C. bef. bein. h. S. S. S. S.

at R. O. R. 1.25 min. E Colombo

58.15 - 22.38 - 7.39 Lat

58.36 - 23.0 - 6.12 Lon

58.15 - 23.25 - 6.3

67.50 - 23.36 - 6.6 watching head

67.50 - 23.60 - 6.62

67.35 - 24.1 - 7.66

66.50 - .12 - 6.62

66.45 - .26 - 6.47

66.60 - .34 - 6.68

67.0 - .45 - 6.9

Corral? S.

11 Nov. 1826. E Colombo; head S.

at R. O. R. 5 + 28 dit 18 feet farther out

11 Nov. On crim. cont?

OR R DW-125 time.

56.05 - 25.5 - 7.50 All

66.30 - 17.5 - 57.5

66.35 - 28 - 52

66.0 - 35 - 52.5

66.0 - 54 - 54

} C

2 December 1826. Apollo Bunder. Bombay - in Oct. hour.

Comp.	before eight	After eight	Prog Chart
957	9-9-0	9-45-0	Lat. 18° 55' 8"
598	7-1-46.5	7-37-46.5	Lon 72-57-78
589	7-12-16	7-48-16	

957. Wilm. \odot AT R + 28
 h. " " " " " " " " " " " "

Alt. Sun abt 3.45 PM

9.27.30.5	43.13.0	} a
28.45	42.43.50	
29.15.5	42.31.60	
29.45.5	42.19.50	} b
30.23	42.5.10	
31.3.5	41.49.30	} c
31.36	41.36.45	
32.16	41.15.40	
32.43.5	41.10.10?	

19 Dec. Pleiades on Apollo Bunder. Bombay. (AT)

	before eight	After eight
957	8.49.30	9.37.30
598	6.43.23.5	7.31.24
589	6.51.22	7.39.22.5

957. \odot R + 28 AT

9.8.37	50.35.50	} a
9.39.5	50.12.55	
10.27	49.55.30	} b
11.2.5	49.42.25	
11.33.5	49.30.60	
12.8	49.18.20	} c
12.37	49.6.30	
13.21	48.50.50	
13.57.5	48.37.55	

6.30 p.m. side station at 5.10 PM
Cape from South-western side of the ...
? summit.

Supra leaf on B
? land on
Low land Eastward of C. Ocean ...
10.30 a.m. side station.

B. S. altum (? Sept.)
- supra leaf - 5000 haps ...
2 peaks
A. low to line (?) 2000
- high out house on middle line ...

7 Aug. 1827. On T.K. of ... water slow of ...
watch - O.R. + 28
9.35.30 - 41.10.50 9.38.0 - watch
35.55 - 15.30 5.32.19 - 95 - Con. 65.4.31
36.30 - 20.50 3.2.66 - 598 - 0.5
3.32.32.589 - 5.55
45.5.19
110

T.K. heap. (ben. comb.) - had 866 - fresh ...
C. Ocean - report 5000 miles ...

extreme
a 26 trees on ...
1500 summit of ...

Land Westward of Back Bay (B)
noon. midday ... ahead (30% ...)

O.R. 56.50.60 - W. 54.53.0 corr? ?
+ 28
Sat. 12.27.53 R Sat. 12.27.1 W.

C. Ocean - from
summit
report 6 layers
to

Land ... of Back Bay (B)

7 [Aug. 1827]. S. amp. off Aben. bearing $\frac{223 \pm 10}{266 \pm 10}$ $\frac{216 \pm 10}{239 \pm 10}$
 amp. R. in. Comp. L. P. [unclear] part. 12 or 14 miles dist.
 to 15.30 at 5.35 P.M.

8 [Aug. 1827]. S. amp. in. Comp. head [unclear] (indistinct)
 R
 8.28.0 P. at 5.55 A.M.

7 Aug. Saw Capelin - bearing to the W. N. W.
 828.0 P.

Somali Coast

9 [Aug. 1827]. M. steering S.W. allow 10 W. to
 Log | 2. Saw the land ————— $\frac{562 \pm 6}{521 \pm 8}$ $\frac{598}{532 \pm 6}$
 B. | 4. Saw ————— $\frac{546 \pm 6}{504}$ $\frac{567 \pm 6}{507 \pm 6}$
 " D. - a part - 7 or 8 hrs. ————— $\frac{542 \pm 6}{352 \pm 8}$
 B. | 6. 65 - strong breeze to [unclear] —————
 Saw ————— $\frac{542 \pm 6}{477 \pm 8}$ to [unclear] $\frac{567 \pm 6}{507 \pm 6}$
 off shore 10 miles —————

9th day

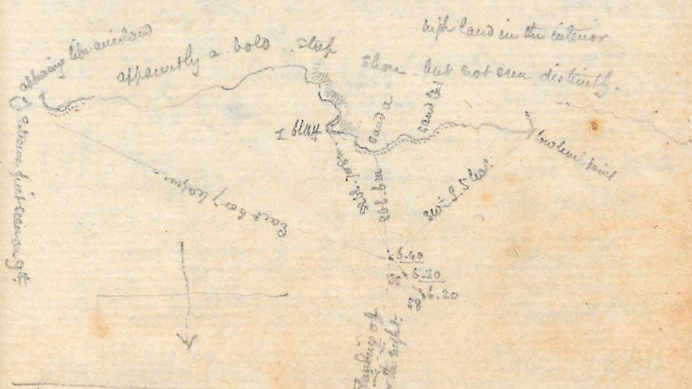
6.20 P.M. standing in line to look for harbors. 58 mud sand.

6.30 . 35 sand. mud.

6.40 - line to N. (moonlight)

lat. 2° W
 $\frac{19}{4} \frac{8}{8}$

- < " want land. base bright sand^{at} abt. 6 miles abt. S 88
- < " a bluff steep at point, about 7 or 8 miles S 88 E.
- < " East extreme (same land as just seen) / East
- < " a long low level point projecting to NW. 54 deg. SW 2 S.
- < " Land extending farther to westward. but the limit not discernible.



9 th P.M. Log	Co.	Winds	10 th P.M. Log	Winds	11 th P.M. Log	Winds
1 - 4.0	S 88 E	8°	1 - 2.6	W 88 E	10 - 2.2	S 88 E
2 - 7.0	S 88 E		2 - 2.6	W 88 E	11 - 4.0	W 88 E
3 - 5.2			3 - 3.6	S 88 E	11 - 2.0	Passive
4 - 5.0	S 88 E		4 - 4.0	S 88 E	12 - 2.4	W 88 E
5 - 8.0	SSE		5 - 3.0		12 - 2.2	Eastward
6 - 4.0	S 88 E		6 - 5.0	W 88 E		
7 - 1.6	W 88 E		7 - 7.0	SSE	1 - 6.0	Passive
8 - 3.0	W 88 E		8 - 3.6		2 - 6.0	W 88 E
9 - 3.0	W 88 E		9 - 3.6	S 88 E	3 - 3.4	W 88 E
10 - 2.6			9 - 4.4	South	4 - 3.4	W 88 E
11 - 2.6			10 - 3.0	S 88 E		
12 - 2.6						

10 Long - One night -
boat

Depth		Sigsbee		Count	
8.36	24.5	31	16 35	8	59 6 W
36	56		21 40	4	30 36 (954)
39	22		27 40	2	26 13 (328)
				2	30 29 (309)

Mean Lon. T.K. 15.32.42. or 28.20. of Stat. W.

T.K. haul. cor 40. - 30 ft. sand - shales. Cor. (allow 10 ft.)

< W. return - same as just - 7 or 8 ft. 2798 2868

< North of the harbor (if any) between 20° N. put the buoy in 2878
< broken tubular tubes 11 2928 3218

< Muddy sand like on coast - buoys 396 518

< Muddy 2 - 9 or 10 3896 5218

< S. turn of a point forming a deep light 2. 2798 3218

< Sandy prop. (a) - buoys 378 368

< Sandy prop. (a) - buoys 378 3628

Dark Prop. - tiles - high sloping point 100 ft. 3030 5518

< W. return - (b) - 7 or 8 ft. 3530 3618

< 2.45 26. 9.27. ft. sand shales. 3198. 06. 3278. 08.

{ Cor. for 2 W. }
{ but allow 10 ft. }

Peak 1 - over a large building in bottom of light P438
 9.14. W. 22. P578

- < Dark brackly sand like 6 or 7 miles P288 P208
- < Peak 1 9 leagues P248 P168
- < W. extreme 9 leagues 2668 2748
- < bluff 1. 14 or 15 miles 27328 28128
- < Dark hills 11 or 12 miles (Penny) P40W P28W
- < West Pt. not very prominent. 5 leagues P47W P55W
- < W. extreme of 8. 40 } 6 leagues } 12 miles like W. 2000 miles } P60W
 of hills. P52W
- < W. extreme - } sandy, low, heavy. (Penny) } P66W
 of hills. 2000 leagues. P58W

9.25 - 22 . 9.50 - 22 going
 10.7 . 19 - same. same .
 < Extreme of 9.14 } 18 or 20 miles } P57W P59W
 < Some bare sand open of 20° about 50° (W. 22)
 < b. W. end } 5 leagues } P46W P54W
 < Summit } orange appearance like 21. 338 & 1100 } 12 miles at the end. } P40W P48W

- < Dark hills 11 or 12 miles P20W P32W
- < very dark land (higher than any other in sight) 14 or 15 leagues P38 P5W
- < a brackly sand like (not same as before) 8 or 9 miles P318 P238
- < bottom of light 8 or 9 miles P538 P8
- < Peak 1 (Penny) 2 miles long } 8 or 9 leagues } P46W P48W
- < bluff 2 - at 8 leagues 2698 2778
- < Brackly sand like 8 miles. at P408 P208

10 January

- 10.42 - 30 feet fine sand shales. Corr^d
- < b. 1/4 mile/ci line bl. 1/2 mile/ and low sandy ^{10'} ~~10'~~ _{10'} S44W
 - < Dark hills - 8 miles S58 S3W
 - < Peak 1 - 10 or 11 miles S60^W S62^W
 - < E. stream - ? bluff 2. - abt 11 haps N70^W N70^W
 - < bushy sandhills - 15 or 16 miles S75^W S67^W

- 97 10.48 Corr^d
- < Pt. b. under Summit - S34W S42W
- 10.50 - Peak 1 (1/2 W).

- < Dark hills - 8 miles S138 S88
- < Pt. b. - ~~10~~ 9 miles S32W S40W
- < Summit b. - 12 miles S24W S32W
- < bushy sandhills - 10 haps S88 S72
- < main land. abt. 8 miles Sight to S66
- S72 S98

10.55 - 49 - 11.13 - 45

- < Dark hills - 8 miles S98 S218
- < Dark peak - 7 miles S168 S88
- < Low sandy spit point 5 or 6 S68 S488
- < bushy sandhills 6 haps S88 S768
- < Peak 1 S708 S628
- < Pt. b. (1/2 W) 6 or 7 miles S24^W S32^W
- < - bl. (1/2 W) 6 miles S23W S31W
- < b. Summit - 10 miles S21W S29W
- < Round Summit - 12 miles S27W S35W

Looking round E. side low sandy spit point for hills
to the N. - in an extent of 3 or 4 miles

11.24 W.S. Spring bluffs

Dark hills — 8 miles — P388 P308

< P. b under Summit b — (12) — P388 P260

P. b on a small low bluff — (61 of survey)

11.38. SW 60° W. after speaking Pandora.

Dark hills — 8 or 9 miles — P298 — S418

noon.

at S. 42° E. 22. 1. 20 + 28 - 4.5 - 120 = 011 at 2.11 57. 2. 17 }
Sat R. 10. 38. 53 to 2. }
W. 10. 38. 15 to 2. }
+ some diam
- cover

noon going S. P. b — 5 1/2 miles — P228 P148

< Dark peak — 8 miles (8) — P538 P248

< Dark hills — 9 miles (9 1/2) — P688 P608

< bushy sand hills — 6 or 7 leagues — P888 P848

< h. Summit — 11 miles (8) — P568 P158

< Round Summit — 11 or 12 miles (8 1/2) — P168 P248

< Round Summit P. — 7 miles (6) — P838 P758

< Projecting bare sand — 9 miles (5 1/2) — P898 P898

< Low sandy spit pt. (not a station) — 2 miles — P288 P288

12.35. 44 — P728

< Dark peaks over P. b — (1650) — P758 P678

< P. b. (8 or 9 miles) under Dark hills — (13 or 10 miles) — P778 P778

< Summit d. / 760 / over Round Summit (9 or 10) — low con. — P328 P328

< Summit d. / 760 / over Round Summit (9 or 10) — low con. — P328 P328

< Summit d. / 760 / over Round Summit (9 or 10) — low con. — P328 P328

Log. Mountain P. 500 miles.

10/10/23

12.25. W.S. - 42

Low shell point	7 or 8 layers (10 1/2)	2646	2726
P. b.	11 or 12 (7 1/2)	2828	2811
Back hole	14 or 15 (10)	2868	2851
Back peak	12 or 13 (11 1/2)	2828	2828
Small G	7 or 8 (5 1/2)	2408	2328
Round point	7 or 8 (5)	2828	2136
Passage sand	buried (4 1/2)	2646	2566
W. un. back hole	(same as shell for) 7 or 8 (5 1/2)	2138	258
d. point	7 layers (10)	2118	238
very high holes in low	same as shell for	2426	2226
Flat sand hole	18 or 19 (16 1/2)	2806	2826
Low level sandy	(1/2) 12 inches (5 1/2)	2426	2806
Sand under shell in low	as for (1/2) 12 or 14 layers	2626	2706
Flat sand hole over	1/2 c	2606	2806

1.27. 43

Back hole	8 or 9 layers (10 1/2)	2768	2808
Back peak	2' up than B.	2778	2808
Round point	12 or 14 inches (10 1/2)	2858	2778
W. b.	7 or 8 layers (14 1/2)	2628	2818
d. point	12 inches (11)	2518	2438
d. point (2)	d. 1	2348	2268
d. point	d. 2	2288	2208

< d3. P ¹ w	S138	S58
- ul w	S98	S18
- west w	S11W	S19W
< o low sand lake near canal (S140)	S6W	S14W
< c. about	S318	S238
< Flat sand lake	S26W	S34W
< stream (a)	S67W	S75W
< Craft at E in Barbora	100012 (52)	S25W S33W

Cause of the out was variable to cut off craft & attempt to escape from Barbora after which beat up to E² in entrance of the Port. in E² June 11

11th June noon on low sandy ft. forming Barbora Port.

O.W. in M. 114.50 cor^d - near Station B.

14th June noon. at same place.

O.W. in M. 115.48.50 cor^d.

10 Jan

12.5

12 Jan.

957 - 4.28.30

598 - 2.24.13.5

589 - 2.28.10

minor - 9.31.6

Jan 957			As DR + 28			
5	19	15	88	0	35	} a
	19	48.5		10	5	
	20	9		18	15	
	20	29.5		27	55	} b
	20	52		55	50	
	21	13		43	25	
	21	41		53	30	} c
	22	16	83	6	25	
	22	48.5		18	25	

2 th	June	Alt.	Alt.			
10.	1	15-145	15	-91	41	0
	1	45	36		49	50
	2.	0	41		58	20
	2	45	47	-92	11	20
	3	15	56.		19	10
	3	30-146	9		28	50
	4	0	13		35	20
	4	15	16		48	0
	4	45	21		52	10

a

b

c

12 Jan. 1877. From Station B. with Circumf. Line (lat. 8°W)

<	B. point - W. trend	—	234.250	333.358
<	a sandy prof. about 60 paces from last	—	245.100	352.50
<	Sand of b. pl. heavy - unrefined (24)	—	260.330	68.33
<	W. side of sandy range b.	—	263.80	71.8
<	N. end of b. range	—	263.40	71.46
<	S. end of range	—	264.48	72.48
<	B. point, over Tomb	—	273.150	81.15
<	Round point	—	271.20	79.20
<	Tomb point. (rocky reef)	—	273.50	81.50
<	Range (harbour) 3 miles beyond b.	{	278.180	86.18
		{	282.380	90.38
<	a sharp peak - 600 yds beyond b.	—	284.370	92.37
<	New Harbour town	{	281.300	89.30
		{	283.450	91.45
<	Old B. town	{	283.550	91.55
		{	289.200	97.20
<	Sand hill - centre	—	289.520	97.52
<	D ^o . under nearest last range d ₁	—		
<	d _{1/2} from	—	286.350	94.35
<	Point. at S. end	—	287.540	100.6
<	Arbutus-head. (head to W.)	—	289.510	97.51
<	Taman - S - D	—	287.250	100.35
<	Landora - D - D	—	286.390	101.21
<	Whole - S - D	—	283.380	104.28

continued

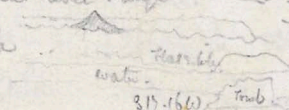
12 th Aug.	Station B. cont ^d .		
< d ramp	bluff craggy N. end	£2.50	105.10
< - -	2 ^d Summit - abate	£80.38	107.23
< - -	Summit	£79.38	108.57
< - -	See foot	£65.50	122.10
< d 2	Summit at North end.	£60.50	127.10
< High intense land.	Summit	£42.00	139.0
< d 3 - from	(Summit)	£51.80	142.42
< - - to	(Summit)	£20.00	168.0
< flat ramp	from	£17.00	171.0
< - - to		£10.00	177.20
< Flat Sandhills		£10.23	198.23
< B point S. system	W. mark	£2.25	145.35
< Low Sandy Cliffs	from	£23.54	211.54
< - - to		£48.65	236.65
< P.C. about		£78.11	266.11
< Location of very dirt	about	£84.18	272.18

D, about 16 or 18 hrs. dirt. 1st Cont

12 th Aug. noon	at station B -	13 th noon	at station
Q.A. R + 28	115.5.30	Q.B + 28	A 115.24.5

From Station to A. 92 chains -
 at 82 chains from B to A. Sandhills were under ground
 at North end range d.

24027. ^{st.}
 from station ~~st.~~ with circumf.

	True	
Exposure of very dist. abrupt land. facing	S 87.42 W	271.42
Pt. a	S 76.50 W	264.50
Station B. (92 chains)	S 61.14 W	249.11
Low sandy cliff on opposite shore	S 51.30 W	239.30
	S 33.23 W	221.23
Tomb (237 chains) in line center of flat sandhills	S 19.56 W	207.56
H _o and very distant level range		
A short peaked hill standing alone		205.16
flat range - from	S 6.54 E	183.9
to	S 12.20 E	175.40
Atholl's head. (head 160)	S 11.9 E	176.51
Tamair D. Do.	S 25.29 E	162.31
Pandora S. Do.	S 31.6 E	156.54
Amberts D. Do.	S 39.42 E	148.18
d 3 - from	S 14.6 E	173.54
to	S 38.35 E	149.25
a small low peak opp. to d 3	S 43.30 E	144.40
a small low peak close to S _o and d 2	S 42.20 E	139.40
summit of high interior land	S 47.24 E	140.26
d 2 summit near Nelson	S 66.7 E	131.53
d 1 peaked summit	S 65.45 E	122.15
Stat. 5. on a small low sandhill (5.70) dist from station	S 63.48 E	124.12
Barbours SW town	S 56.30 E	133.30
	S 65.20 E	122.40
New town	S 62.45 E	125.15
	S 67.9 E	120.51

	Cor ^d	Mag.
< The intensity of the mark in Harbor Park	2110.248	
< W. the mark D ^o	577.316	
< Sandhills	584.358	103.25
< d. Point	599.38	108.57
< 2 ^d Point	576.228	111.39
< 1 ^o Point	572.128	109.48
< d. 1/2 - Point near S ^o end	580.306	107.50
< 1 ^o end	585.418	102.14
< a dist. part of a bluff facing S ^o	288.406	96.40
< b. Point	285.178	93.17
< Round Point	273.446	81.44
< b. 1 ^o end of range	272.166	80.16
< Sandy ridge at 1 ^o end to range 1 ^o end	263.426	71.42
< Lary eastern - 1 ^o b. pt.	263.46	71.4
< Stat. C. (8.1 Chains)	257.306	65.30
	214.66	55.44

12 p.m.

from station C. with circumf.

Corr? mag.

< Salween - ? V. b	257.28	65.48
< elevated sand hills - (? b)	260.52	68.52
< Sandy h ² end b	263.76	71.57
< h ² end b range	266.36	72.37
< b summit	274.30	82.30
< d summit	375.40	112.20
< d 1	363.28	122.58
< d 2	355.76	132.24
< Tomb	311.47	199.47
< Station A. (87 chains)	514.22	173.38
< Sand hills	377.47	110.43
< Station B.	386.45	246.45
< Prof ^g sandy terr on B	384.47	252.47
< Ans.	386.57	256.57
< Ans.	369.80	257.8
< Direction of the earth for 250 ft. each way	266.40	74.40
< Prof ^g sandy W.	265.48	73.4
< D. in line with ans. 1 1/2 mile beyond it from which extends a shoal	334.38	153.22
< Station D		

15 July. From South station, with Circumf. hr:30

	Corr.	
< Station A. (257 chains)	212.538	426.538
< Cairn	257.158	59.15
< Sandy Hill	262.308	70.30
< b. Hill	263.58	71.5
< Summit overhead flight	272.478	80.47
< Round Point	271.188	79.18
< old New Harbour tower	288.368	99.24
	274.238	113.37
< d ¹ Hill	287.158	95.16
< Summit second hill	286.578	101.3
< Sandhills (steep)	285.448	102.46
< d. Hill	281.468	106.16
< - 2 nd Hill	279.258	108.35
< Summit	277.398	110.21
< d1	281.188	120.42
< d2	251.468	130.6
	285.308	132.30
< Summit of high interior land	288.118	139.49
< d3 - from	280.148	147.50
< to	215.08	173.0
< Flat Summit	285.218	176.1
	25.378	182.73
< Sandhills	220.98	159.57
< Flat Sandhills	24.108	192.18
< Flat Sandhills under S. end det. ramp	220.0	208.0
< Sharp knob like	217.178	205.17
< Sand d. diff. on opposite side	235.038	223.33
	250.0	239.0

From Tomb cont.

	Corr.	Mag.
< B - 50' lens	862.666	250.468
< B station	872.386	260.38
< Tomb. center (10 1/2')	258.6	315.0
< Station C - (10')	233.15	41.15

in 1/4 in. at a

< d to Tomb	50.55
< b to end to Tomb	22.20
< d1 to d	9.40
< Flat sand hill to N° bluff of d	99.16

Bank very steep with 12 feet at 2 brats length. Apparently about 1 1/2 feet inches - bank steeper at base.

	Corr.	Mag. 8' 10'
Truss B - with circump.	861.32	269.32
< Tomb	862.54	70.54
< b to end	872.18	80.18
< - Summit		
< N. end sand ramp over edge of Tomb fl.	862.23	70.23
< d = Summit	888.33	99.2
< d. bluff N. end	883.25	104.35
< 20' summit	881.15	106.45
< Summit	879.35	108.25
< d1	870.98	117.51

Turn E Coal	P81.218	126.39
d2	S59.196	128.01
Snake peak off road d2	S52.206	133.60
Snake peak off road d3	S49.416	138.19
d3. from	S45.256	142.35
to	S22.558	167.5
flat range	S16.298	171.41
	S10.8	178.0
Sandwich	N98.18E	96.18
Flat sandwich	S12.53W	200.53
Sandwich	S22.8	145.0
Sharp peak	S16.11W	204.11
Low sand cliff on S of peak	S21.40W	209.40
	S52W	240.0
	Nary S73.22E	266.22
Station B (179 chains)	N63.13W	304.4
Station A	N50.27E	58.3
Point peak	N84.7E	92.7
Summit of elev. low	S49.15E	138.45
Coire	N58.12E	66.12

Turn F (on B4) with circumf.	Corr:	Mag.
B5	N58.51E	66.51E
b. h. end of range	N66.10E	72.10
- Summit	N73.62E	81.62

from F. coal?

< d ¹ - summit area 80' wide	P87.128	100.48
< d - 6' craggy summit	P82.56	105.55
< - summit	P78.178	109.43
< d1	P88.456	119.15
< d2 - from	P60.6	128.0
< - to	P88.26	129.57
< d3 - from	P64.126	143.66
< - to	P19.356	158.25
< flat range from	P166	172.0
< - to	P10.106	177.80
< Sand hills	P86.506	181.10
< Sand hills	P10.346	147.26
< Flat sand hills	P7.206	180.40
< Station B	P25.206	213.20
< Black peak	P16.716	204.7
< B2	P38.176 ab.	226.17
< B3	P45.6	233.0
< NE end of ^{dry} pit property NE ² from B3	P72.0 ab	250.0
< on SW end of dry pit property NW ² from B3	P76.0	265.36
< between of main towards pt b	258.456	66.95
< Station A	268.556	76.55
< Russo extreme to W ² (2 cont)	P83.556	271.55
< Tomb under dist. bluff peak	285.26	93.2
< Sandhill - 'flat sandhill'	P7.186	180.42

123
173
172
57

97.50
82.45
101.95
78.17
111.15
68.45
124.57
158.3
135.46
64.14
160.27
50.35
160

157.50
108.14
98.50
130.96
54.30
46.26
133.34
27.53
92.25
7.91
1.812

45.4.13
45.20.28
16.15 x 12

285.34
222
52 45
257
83.55
172.62
81.18

16.40
32.22
31
1.22
201.46
26
13.23
107
101
131/104

3.996 = 16.15 x 12
3595851
3479
14.554
4918
12205
10-2.157
1625
16.25
519
550
505
346
266
280
122
15.00
19
25
19
16.18
16242
10-603.1
50.45
120.15

