

3 r
\$50
Scara
Scara

UNVEILING-CEREMONY

OF THE

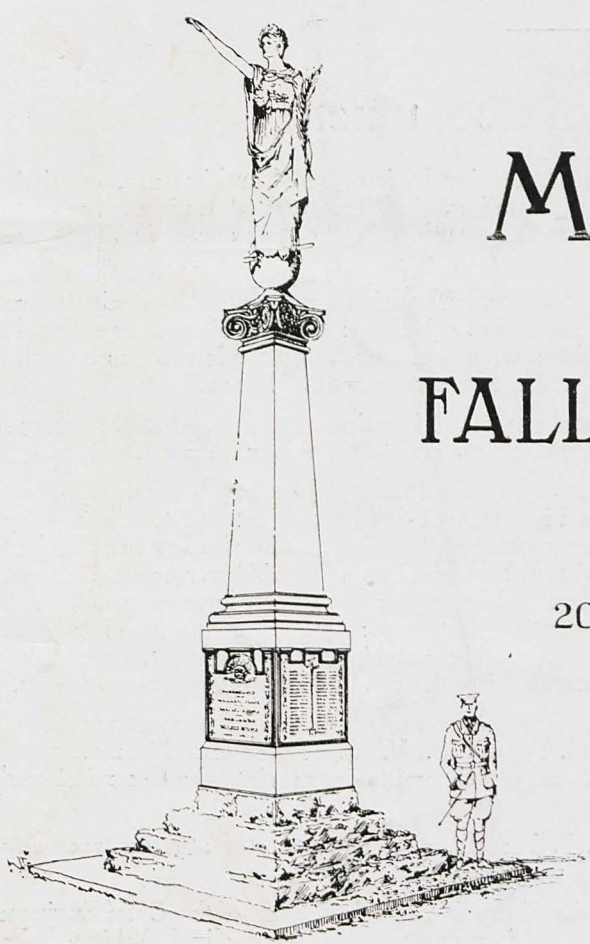
MIDLAND JUNCTION RAILWAY WORKSHOPS, OFFICES, AND STORES.

MEMORIAL

TO

FALLEN SOLDIERS.

20th DECEMBER, 1925.



OFFICIAL PROGRAMME.

Officials and Committee of Memorial Fund.

President :

Mr. E. A. EVANS, M.I.M.E., Chief Mechanical Engineer.

Chairman :

Mr. G. F. DENNIS.

Hon. Secretary :

Mr. A. S. LORIMER.

Hon. Treasurer :

Mr. JAS. FLINT.

Trustees :

Messrs. J. W. R. BROADFOOT and T. H. RYAN.

Committee :

Messrs. W. J. ANNEAR, J. W. GOW, G. A. KENNEDY, G. G. LOW, A. MILLS, A. S. PAYNE,
D. STEVENSON, J. J. DAVIES, and B. SHILLITO.

Description of Monument.

The design for the Memorial Column is after the Grecian Ionic order of architecture, consisting of a chamfered plinth, die and cap, square base moulding, shaft and carved Ionic cap, mounted upon three rock-faced granite steps. Western Australian granite (Mahogany Creek) has been used for this work.

The bronze draped female figure standing upon a sphere which surmounts the granite column is represented as calling upon the world, the right hand raised demanding silence, and the left one holding a palm leaf ; the head is crowned with a wreath of laurel, and the left foot is trampling upon the sword. The pose and attitude of the whole figure represents "Peace."

A special feature has been made of the bronzed name and inscription tablets, which are secured to three faces of the die stone ; they have been specially designed for this monument.

The Memorial is placed 40 feet from the east end of the Midland Junction Workshops Offices and 15 feet from the boundary fence. This position was decided upon so that the Workshops employees and the public generally could have an uninterrupted view. The site has been laid out with lawns and flower beds in accordance with the suggestion of the Government Gardener (Mr. Campbell), and curved cement borders and gravel footpaths have been formed to enable the public and employees to walk round the monument so that they may inspect the inscription and name tablets. A new ornamental wrought-iron open fence six feet high, with brick piers and dwarf wall, has been substituted for the galvanised corrugated iron fence abutting on the front roadway.

The lawns, footpaths, and new boundary fence constructed around the monument were authorised by the Commissioner of Railways (Col. Pope, C.B., V.D.). These embellishments have greatly enhanced the appearance of the column, and the Committee appreciate the Commissioner's kindly action.

The figure "Peace" was modelled by Mr. P. Porcelli, of Perth, sculptor and contractor for erection of the memorial, and the bronze casting was executed at Naples.

The Committee placed the whole of the details of the work in the hands of the Chief Engineer, Way and Works Branch, Railway Department, and his representative, Mr. Felix J. Whitwell, has personally supervised the work throughout.

NAMES OF THE FALLEN SOLDIERS ASSOCIATED WITH THE MIDLAND
JUNCTION WORKSHOPS, INCLUDING THE WEST MIDLAND
WORKSHOPS, THE CHIEF MECHANICAL ENGINEER'S OFFICE, AND THE
RAILWAY STORES.

APPLEBY, Frederick William	LEWIS, Edwin Thomas
BRABNER, Harold James	LEWIS, Lewis James
BREUER, James Herman	McFARLANE, Archibald Henry
BRITT, William	MASTERS, Reginald William
BROWN, David William	MEAD, Ernest James
BUCKINGHAM, Hugh Alexander	MEADOWS, Harry Charles
BURLEY, Charles Ernest	MENZIES, Robert
CAMPBELL, William Argyle	METTAM, Harold William
CLEVERLEY, Harry	MIDGLEY, Raymond William Dalton
COGDON, Alfred	MINCHIN, Joseph Henry
COPE, Frederick	McCARTHY, Jack
COWIE, Andrew Gray	McCOMISH, Arnold George
CRAWFORD, George Edward	McHUTCHISON, Thomas
DANES, Harold Edward	McLACHLAN, Thomas Henry
DAVIES, Ernest Alfred	MORAN, Bartholomew John
DAVIES, William Ernest Enoch	NELSON, Harry
DEAN, Jack	OMA, Norman
DINGLE, Charles	OSWALD, John
DOBSON, George James	PEARMAN, Frederick James
DOIG, John Alexander	PHILLIPS, Frank
ELMS, Harry	PIRANI, Ernest John
FLOOD, John Hope	POWER, Arthur George
FOSTER, Thomas Charles	PRESS, William Stephen
FRY, Thomas Leonard	ROBINSON, Richard
GAST, Charles Chandler	SELLS, James Prideaux
GIBBARD, Joseph Hudson	SMART, Robert Brown
HARMS, Charles	SMITH, Arthur George
HARBURN, John	SPICE, Theo
HELLMRICH, John Mathison	STEPHEN, William Walter
HODGSON, Harold	STEWART, Charles Douglas
HORNER, Ernest William	SUMNER, Cyril William
INGATE, Harry	WELSHMAN, Alfred Charles
KAY, Harry	WHEELER, Harry
KIRKBRIDE, Sidney Harold	WILSON, William Joseph
LEA, John	WILSON, Peter John

— PRINCIPAL RAILWAY OFFICERS —
 — AND —
 — COMMITTEE EXECUTIVE —



— MR. T. H. RYAN —
 — TRUSTEE —



— MR. J. W. R. BROADFOOT —
 — TRUSTEE —



— CHIEF MECHANICAL ENGINEER —
 — MR. E. A. EVANS —



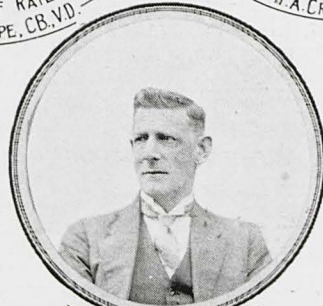
— COMMISSIONER OF RAILWAYS —
 — COLONEL H. POPE, CB, VD —



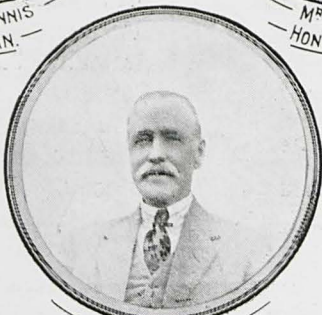
— CHIEF ENGINEER WAY AND WORKS —
 — MR. H. A. CRESSWELL, M.I.C.E. —



— MR. G. F. DENNIS —
 — CHAIRMAN —



— MR. JAS. FLINT —
 — HON. TREASURER —



— MR. A. S. LORIMER —
 — HON. SECRETARY —

Order of Ceremony.

3.15. Selection by 28th Battalion Band

(Whose services have been granted through the Courtesy of Lieut. Col. E. Glyde, C.O., 28th Battalion.)

3.25. Item "Comrades in Arms," by Railway Male Octet.

3.30. Arrival of His Excellency the Governor.

NATIONAL ANTHEM (Band only).

Inspection of Guard of Honour provided by Workshops Sub-Branch Returned Soldiers' League.

3.35. Welcome to His Excellency by Minister for Railways (Hon. J. C. Willcock).

3.40. 1.—HYMN.

"O God, Our Help in Ages Past."

O God our help in ages past,
Our hope for years to come,
Our shelter from the stormy blast,
And our eternal home.

Under the shadow of Thy Throne,
Still may we dwell secure,
Sufficient in Thine arm alone,
And our defence is sure.

Before the hills in order stood,
Or earth received her frame,
From everlasting Thou art God,
To endless years the same.

A thousand ages in Thy sight
Are like an evening gone,
Short as the watch that ends the night
Before the rising sun.

O God, our help in ages past,
Our hope for years to come,
Be Thou our guard while life shall last,
And our perpetual home.

3.45. President of the Memorial Committee (Mr. E. A. Evans, Chief Mechanical Engineer) will request His Excellency to unveil Memorial.

3.50. Address by His Excellency, and Unveiling Ceremony.

4.5. Placing of Floral Tributes at foot of Memorial.

"DEAD MARCH" ("SAUL").

"LAST POST" WILL BE SOUNDED.

4.15. Dedication by His Grace the Archbishop of Perth (Chaplain-General).

4.25.

2.—HYMN.

“*Abide With Me.*”

Abide with me, fast falls the eventide,
The darkness deepens, Lord, with me abide.
When other helpers fail, and comforts flee,
Help of the helpless, O abide with me.

Come not in terrors, as the King of Kings,
But kind and good, with healing in Thy wings.
Tears for all woes, a heart for every plea,
Come, friend of sinners, and abide with me.

Swift to its close ebb^s out life's little day,
Earth's joys grow dim, its glories pass away.
Change and decay in all around I see,
O Thou who changest not, abide with me.

Reveal Thyself before my closing eyes,
Shine through the gloom, and point me to the
skies.
Heaven's morning breaks, and earth's vain
shadows flee,
In life and death, O Lord abide with me.

4.30. Chairman of Memorial Committee (Mr. G. F. Dennis), on behalf of Committee, will formally hand over Memorial to the Government.

4.35. The Commissioner of Railways (Colonel H. Pope, C.B., V.D.), will officially take over Memorial as Railway property.

4.45. Vote of Thanks to His Excellency and Visitors—Proposed by the Comptroller of Stores (Mr. W. Bromfield), supported by the Workshops Manager (Mr. J. W. R. Broadfoot).

4.55.

3.—HYMN.

“*The Recessional.*”

God of our fathers, known of old—
Lord of our far-flung battle line—
Beneath whose awful hand we hold
Dominion over palm and pine—
Lord God of Hosts, be with us yet,
Lest we forget—lest we forget!

Far called our navies melt away—
On dune and headland sinks the fire—
Lo, all our pomp of yesterday
Is one with Ninevah and Tyre!
Judge of the nations, spare us yet,
Lest we forget—lest we forget!

The tumult and the shouting dies—
The captains and the kings depart;
Still stands Thine ancient Sacrifice,
An humble and a contrite heart.
Lord God of Hosts, be with us yet,
Lest we forget—lest we forget!

For heathen heart that puts her trust
In reeking tube and iron shard—
All valiant dust that builds on dust,
And, guarding, calls not Thee to guard,
For frantic boast and fool'sh word,
Thy mercy on Thy people, Lord!

NATIONAL ANTHEM.

God save our gracious King,
Long live our noble King,
God save the King.
Send him victorious,
Happy and glorious,
Long to reign over us,
God save the King.

God bless our native land,
May His protecting hand
Still guard our shores.
May peace her power extend,
Foe be transformed to friend,
And Britain's rights depend,
On war no more.

Midland Junction Railway Workshops' Offices and Stores Memorial

ERECTED IN HONOUR OF

Comrades who fell in the Great War, 1914=1918.



Unveiling

BY

HIS EXCELLENCY THE GOVERNOR (LIEUT.-COL. SIR WILLIAM ROBERT CAMPION,
K.C.M.G., D.S.O.)

Dedication

BY

HIS GRACE THE ARCHBISHOP OF PERTH (CHAPLAIN GENERAL).

In the presence of the Staff generally, subscribers to the Memorial Fund, relatives of Fallen
Soldiers, and invited guests, including:—

THE HON. THE PREMIER (MR. P. COLLIER).
THE MINISTER FOR RAILWAYS (HON. J. C. WILLCOCK).
THE COMMISSIONER OF RAILWAYS (COLONEL H. POPE, C.B., V.D.).
THE CHIEF ENGINEER WAY AND WORKS (MR. H. A. CRESSWELL, M.I.C.E.).
THE CHIEF TRAFFIC MANAGER (MR. C. S. GALLAGHER).
THE CHIEF ACCOUNTANT RAILWAYS (MR. L. H. GWYNNE).
THE COMPTROLLER OF STORES (MR. W. BROMFIELD).
THE SECRETARY FOR RAILWAYS (MR. J. F. TOMLINSON).
THE GENERAL MANAGER, GOVERNMENT TRAMWAYS (MR. W. H. TAYLOR, M.I.E.E.).
THE GENERAL MANAGER, MIDLAND RAILWAYS (MR. J. J. POYNTON).
THE GENERAL MANAGER, STATE IMPLEMENT WORKS (MR. F. E. SHAW).
THE GOVERNMENT PRINTER (MR. F. W. SIMPSON).
THE STATE COMMANDANT (LIEUT.-COL. J. L. HARDIE, D.S.O., O.B.E.).
THE MAYOR OF MIDLAND JUNCTION (MR. W. R. CROSBIE).
TOWN CLERK OF MIDLAND JUNCTION (MR. G. JAMIESON).
THE MEMBER FOR GUILDFORD (MR. W. D. JOHNSON, M.L.A.).
HON. JOSEPH DUFFELL, M.L.C.
HON. A. J. SAW, M.L.C.
HON. H. A. STEPHENSON, M.L.C.
MAJOR-GENERAL SIR J. J. TALBOT HOBBS, K.C.B., K.C.M.G., V.D.
LIEUT.-COL. E. GLYDE (Commanding 28th Battalion).
LIEUT.-COL. H. B. COLLETT, C.M.G., D.S.O., V.D. (State President R.S.L.).
LIEUT.-COL. R. E. JACKSON.
HIS GRACE ARCHBISHOP CLUNE.
RABBI D. I. FREEDMAN (Jewish Synagogue).
REV. CANON GROSER (Church of England).
REV. A. EWART BRICE (Presbyterian Church).
VERY REV. DEAN KYLIE (Roman Catholic Church).
REV. F. S. FINCH (Methodist Church).
OFFICER-IN-CHARGE, Salvation Army.

Acknowledgment.

To all subscribers to the Memorial Fund, and all who have assisted directly and indirectly in erecting this handsome monument, the Committee desire to tender sincere thanks. Further, we are grateful for the interest taken by the staff and visitors who have assembled to-day. We feel sure that this gathering will take a prominent place in the annals of these Railways.

For the Committee,
A. S. LORIMER,
Hon. Secretary.