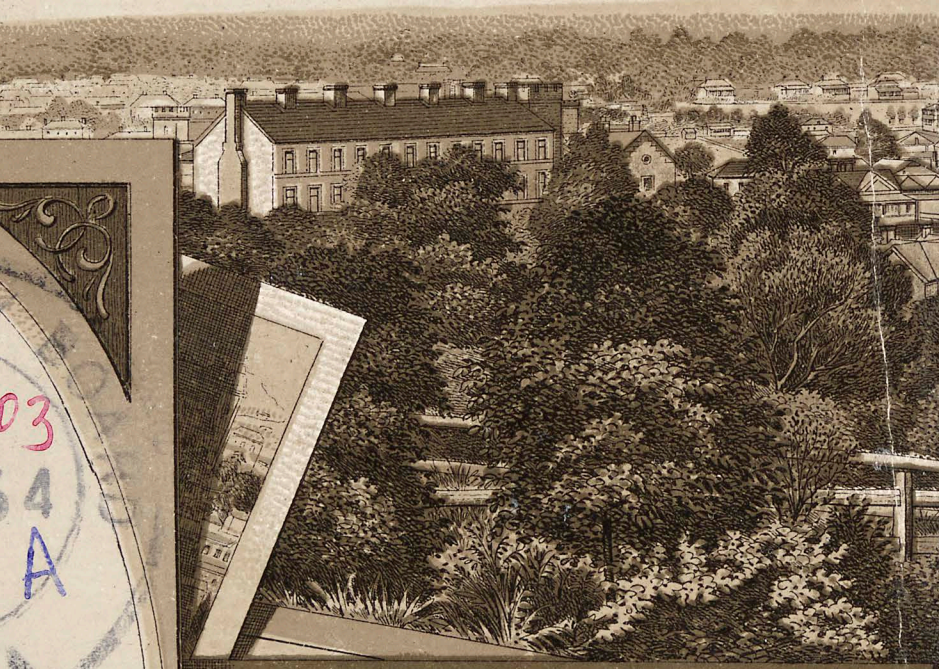




ALBUM
OF
WESTERN
AUSTRALIA

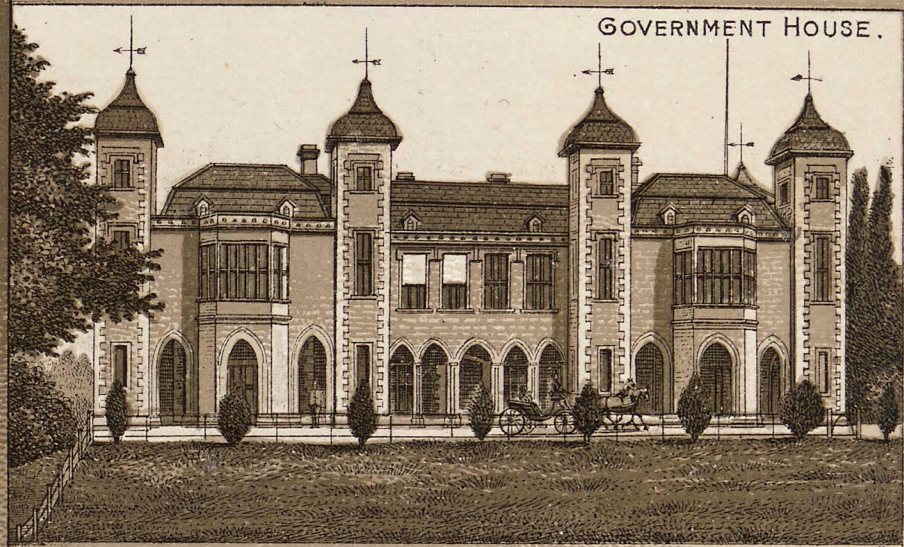
ENTERED AT STATIONER'S HALL.



HAY STREET.



GOVERNMENT HOUSE.



GENERAL VIEW



ST. GEORGES TERRACE, LOOKING EAST.



GENERAL POST OFFICE.



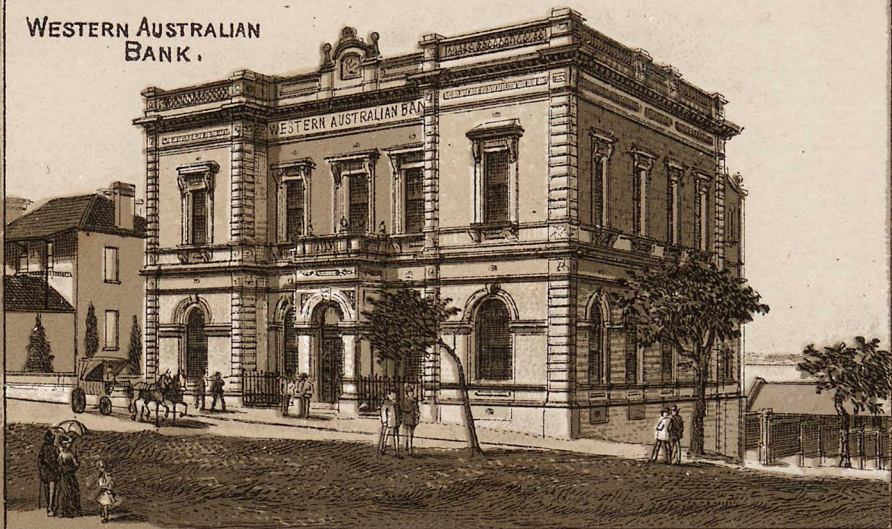
RAILWAY STATION.



OF PERTH.



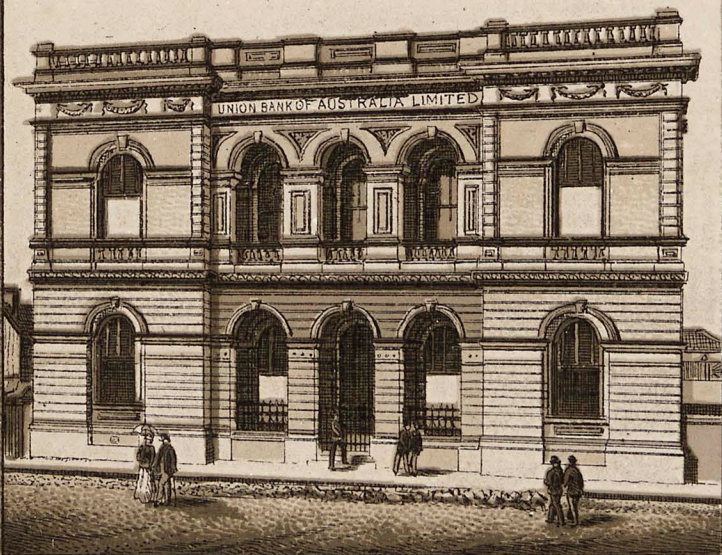
WESTERN AUSTRALIAN BANK.



NATIONAL MUTUAL LIFE ASSOCIATION
COMMERCIAL BANK.



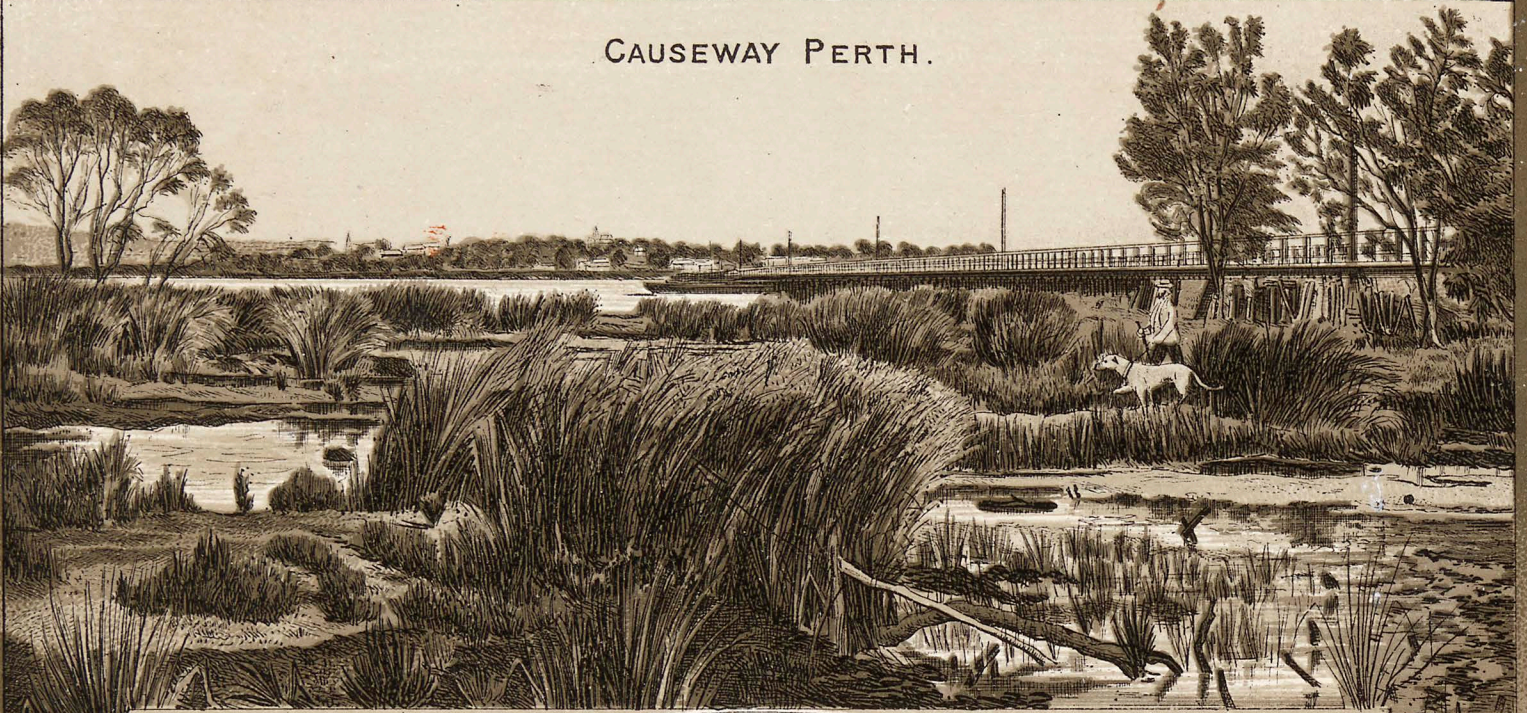
UNION BANK OF AUSTRALIA LIMITED.



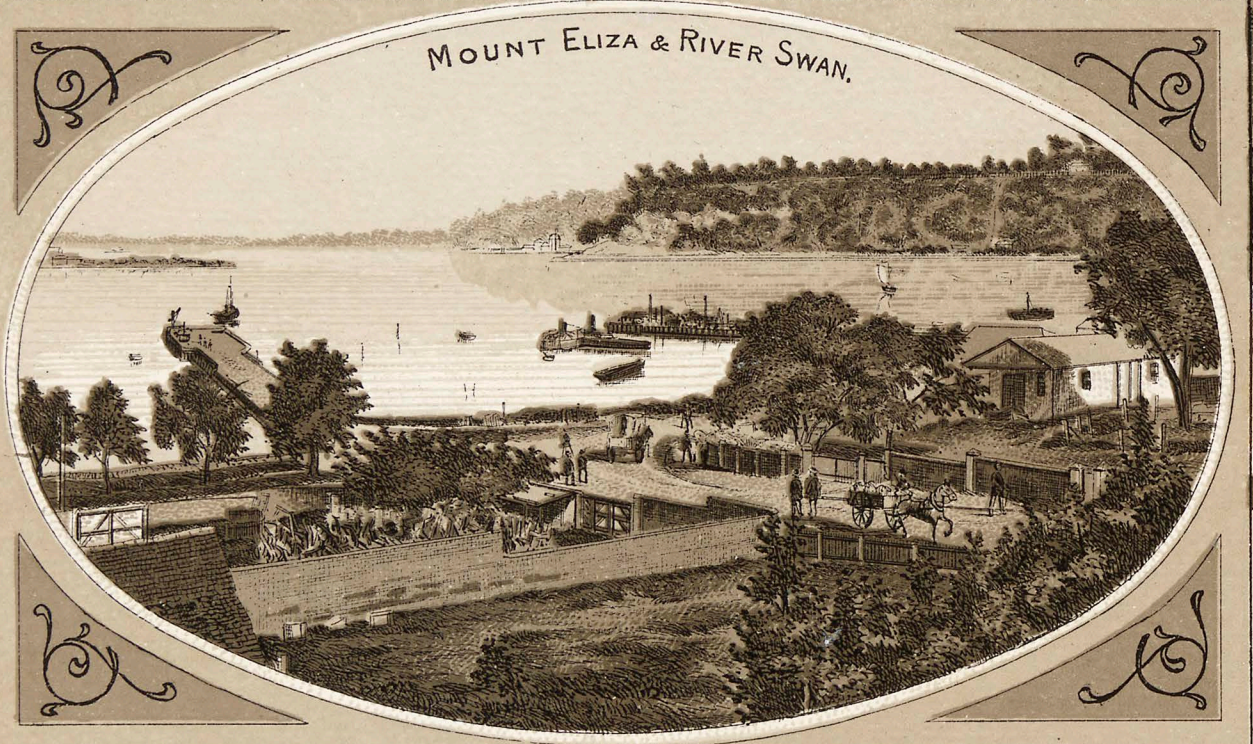
WESLEY CHURCH.



CAUSEWAY PERTH.



MOUNT ELIZA & RIVER SWAN.



THE BAR MOUTH OF THE SWAN RIVER.



PERTH FROM TOP OF MOUNT ELIZA.



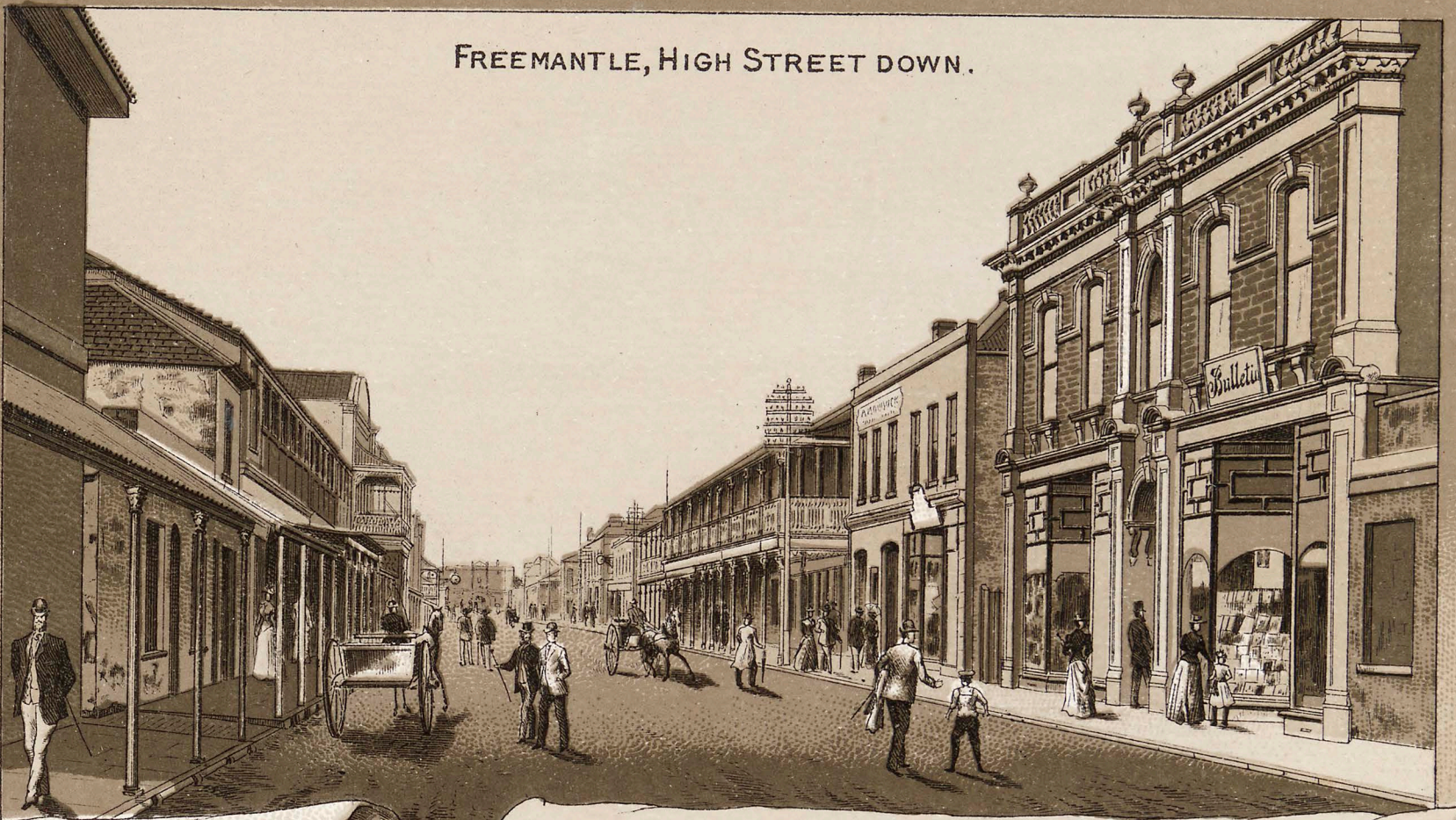
EAST PERTH.

FREEMANTLE, HIGH STREET UP.



GENERAL VIEW

FREMANTLE, HIGH STREET DOWN.



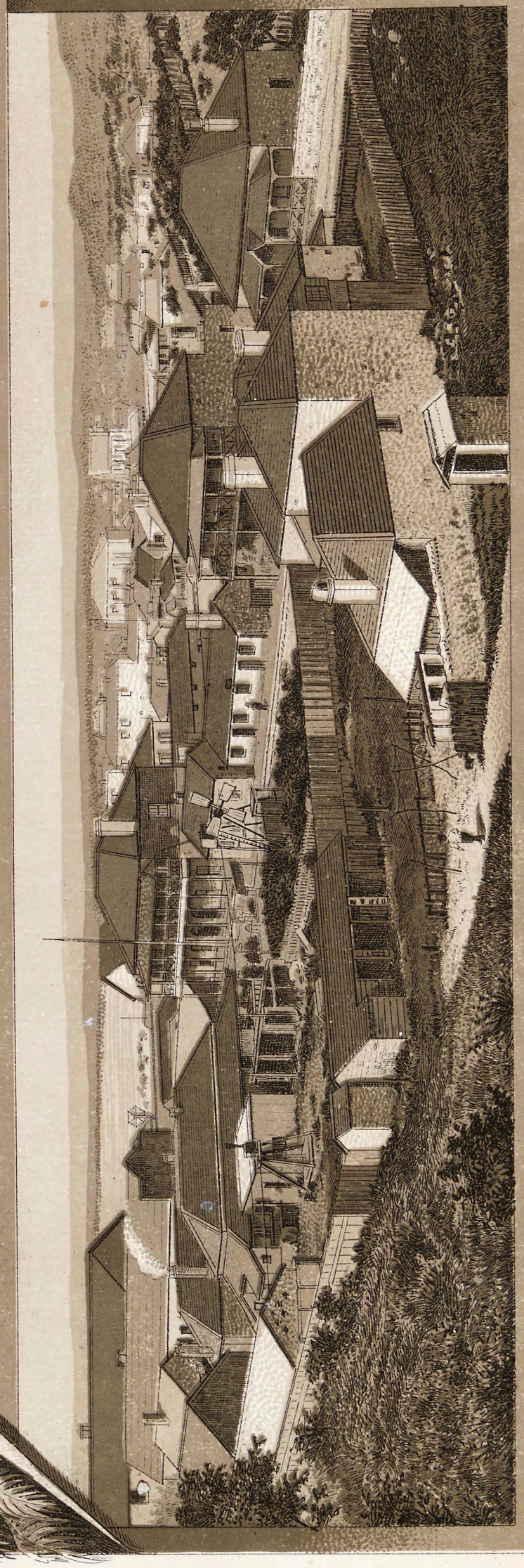
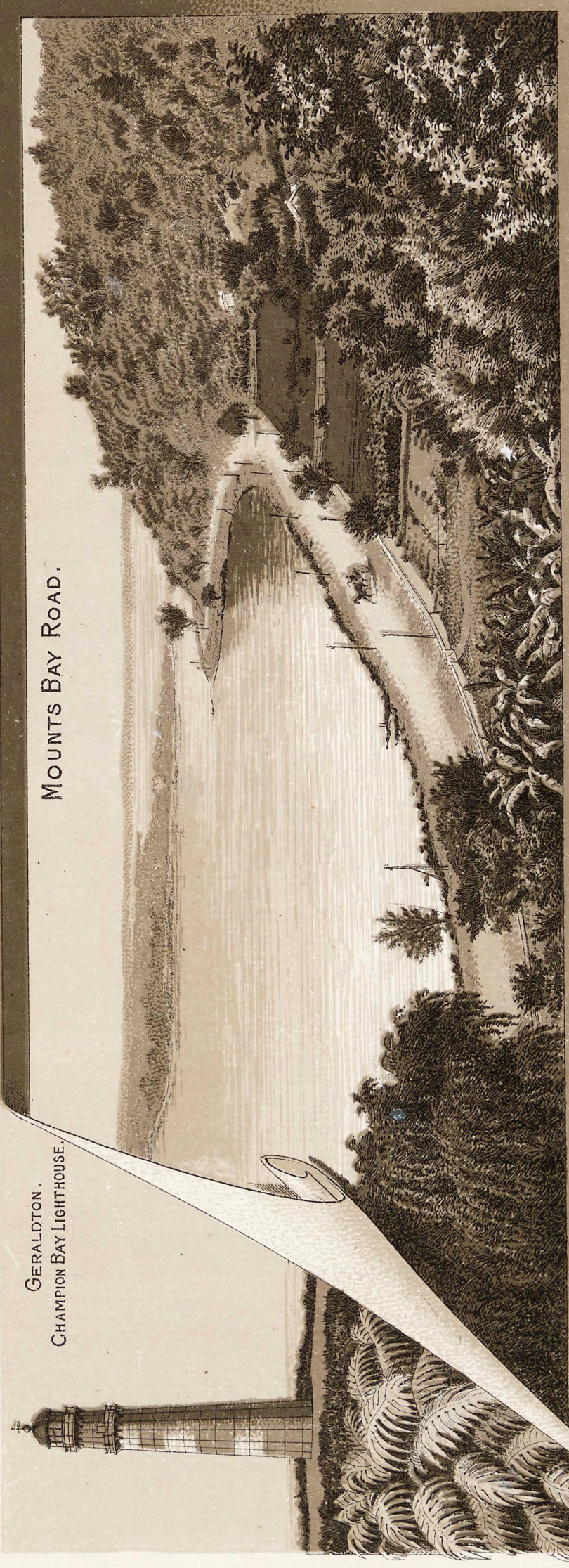
OF FREMANTLE.



FREMANTLE, TOWN HALL.

GERALDTON,
CHAMPION BAY LIGHTHOUSE.

MOUNTS BAY ROAD.



GERALDTON CHAMPION BAY.

GENERAL



ALBANY, KING GEORGES SOUND.

VIEW OF ALBANY.



ALBANY, THE TERRACE, KING GEORGES SOUND.

To Dear Edith wishing her a very
happy New Year. From Gottie Turner

PUBLISHED BY

B. STEIN & CO.,

Booksellers, Stationers,

AND

Importers of Fancy Goods.

AGENTS FOR

All Colonial and English Papers and Magazines.

Plain and Ornamental Job Printers.

BARRACK STREET, PERTH.



