

100 *~* Glimpses

OF
WEST

AUSTRALIA

BY
NIXON & MERRILLS
Photographers
FREMANTLE



Sold by all Booksellers

Mr. J. W. Gordon.

With Compliments of the Season

Be Merry, be Merry

Dear Sir,

RARE BOOK

RARE BOOK

100 Glimpses
OF WEST AUSTRALIA
By NIXON & MERRILEES
Photographers
FREMANTLE



Copyrighted,
November 1, 1898.

Sold by all Booksellers

J. W. BARNARD,
BOOKSELLER, ETC.,
Barrack Street,
PERTH.

THE LIBRARY
BOARD OF
WESTERN
AUSTRALIA

70077

494.1 NIX

CONTENTS

Perth (Panorama) from R.C. Cathedral.
Perth, from Mount Eliza.
South Perth.
Hay Street, Perth.
St. George's Terrace, Perth, from Mt. Eliza.
Observatory, Perth.
Museum, Perth.
Masonic Hall, Perth.
St. George's Terrace, Perth.
Post Office, Perth.
Royal Mint, Perth.
Mount Eliza.
Government Gardens, Perth.
View in Government Gardens.
Weld Club, Perth.
Interior Railway Station, Perth.
Front of Railway Station, Perth.
St. George's Cathedral, Perth.
Roman Catholic Cathedral, Perth.
Fremantle (Panorama) from Lighthouse.
Fremantle, from Monument Hill.
Harbor, Fremantle.
High Street, Fremantle (looking East) showing type of business premises
High Street, Fremantle (looking West)
Town Hall, Fremantle.
Hospital, Fremantle
New Fever Ward, Fremantle.
North Fremantle.
View of Swan River.
Old Bridge, over the Swan.
Construction View of Bridge.

Markets, Fremantle.
Post Office, Fremantle.
Oval, Fremantle.
Rottneest Island.
Salt Lakes, Rottneest.
Prisoners, Rottneest.
Natives' Chain Gang.
Four Views of Osborne.
Bunbury.
Rockingham Jetty.
Jarrah Timber.
View of Albany.
Jarrah Logs.
Jarrah Mills.
Serpentine Falls.
Jarrah Forest.
Jarrah Falling.
Albany Jetty.
Settler's Cottage.
Swan River, Guildford.
Point Walter.
Albany.
Geraldton Jetty.
Marine Terrace, Geraldton.
York.
Katanning.
Cue.
Main Street, Cue.
Camel Train.
Railway, Eastern Line.
Eastern Railway.
Avon River.

Swan River at Guildford Bridge.
Northam.
Newcastle.
Southern Cross.
Northam Railway Station.
Coolgardie (Panorama).
Coolgardie in 1891.
Post Office and Warden's Court, Coolgardie
Exhibition Buildings, Coolgardie.
Kalgoorlie (Panorama).
Old Post Office, Kalgoorlie.
Boulder City.
Camp Life.
Condenser.
Great Boulder.
Lake View.
Ivanhoe.
Brown Hill.
Great Boulder and Lake View (Panorama).
Ivanhoe.
Great Boulder.
Australian United.
Lady Shenton, Menzies.
Dry Blowing.
Cement Claim.
Menzies, General View.
Main Street, Kanowna.
Main Street, Kalgoorlie East.
Main Street, Menzies.
Main Street, Kalgoorlie West.
Coolgardie Backs.



PERTH FROM R.C. CATHEDRA

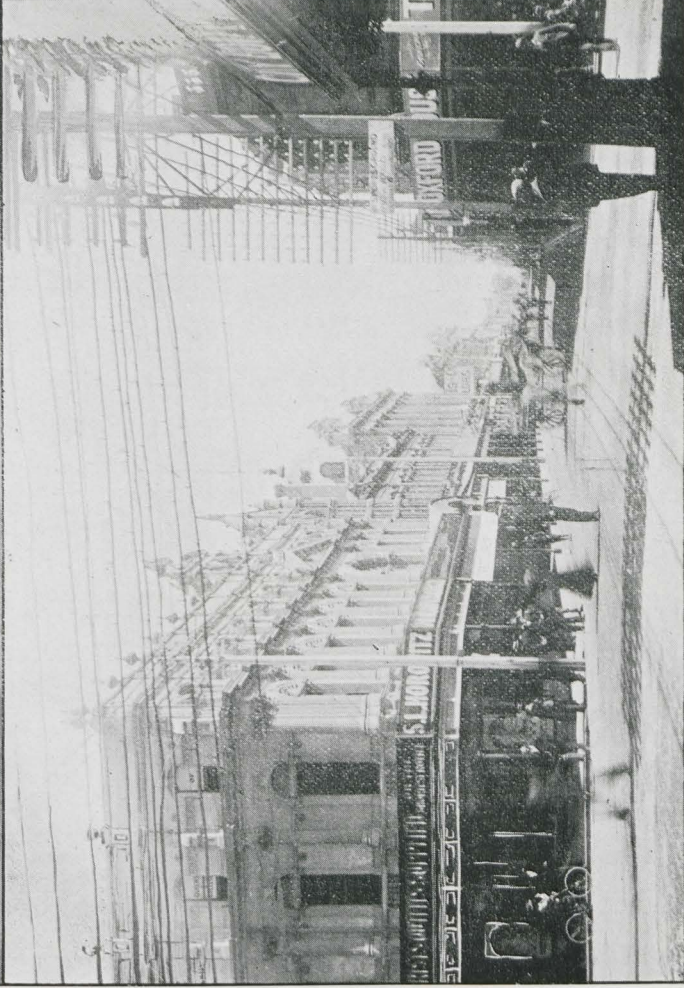
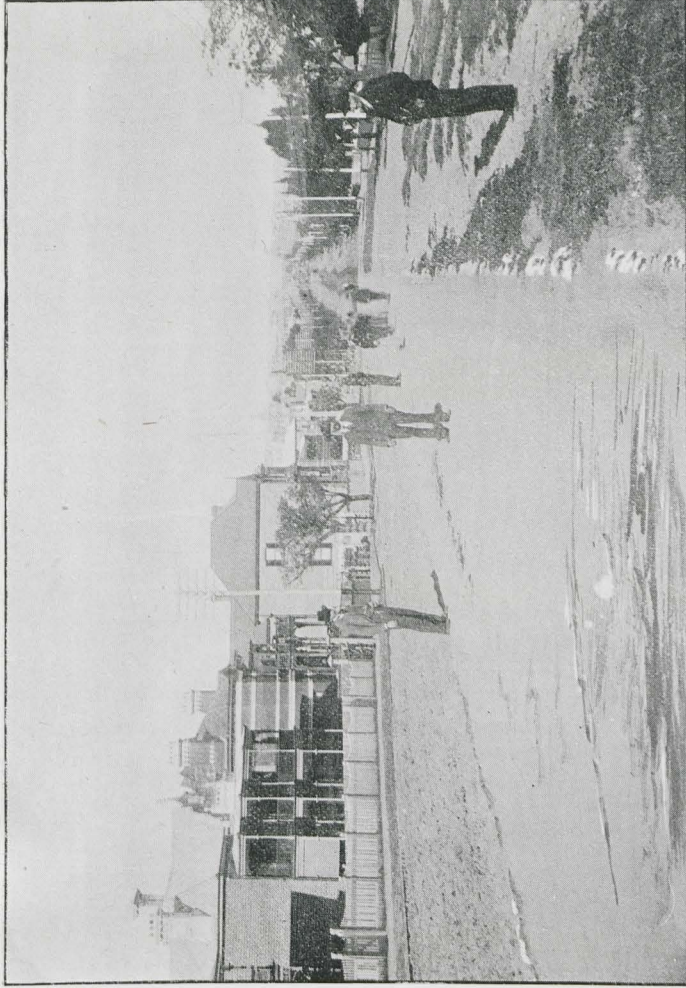
PERTH Panorama (from R.C. Cathedral) THE CAPITAL OF THE COLONY, ON THE SWAN RIVER. Population about 35,000.



PERTH FROM MOUNT ELIZA.

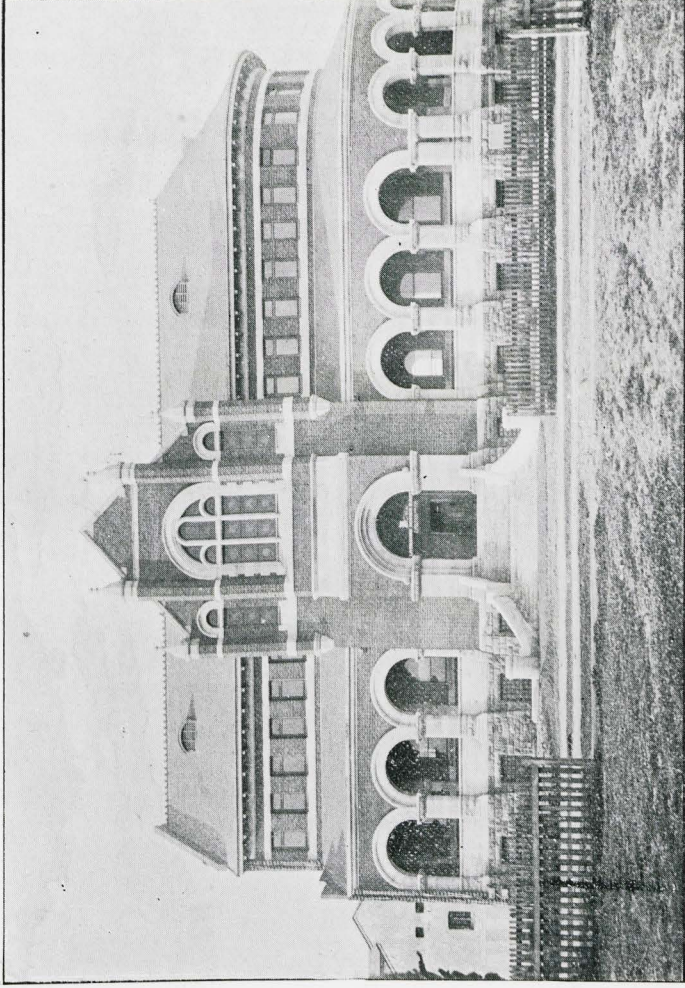


SOUTH PERTH.



St. George's Terrace, from Mt. Eliza.

Hay Street.

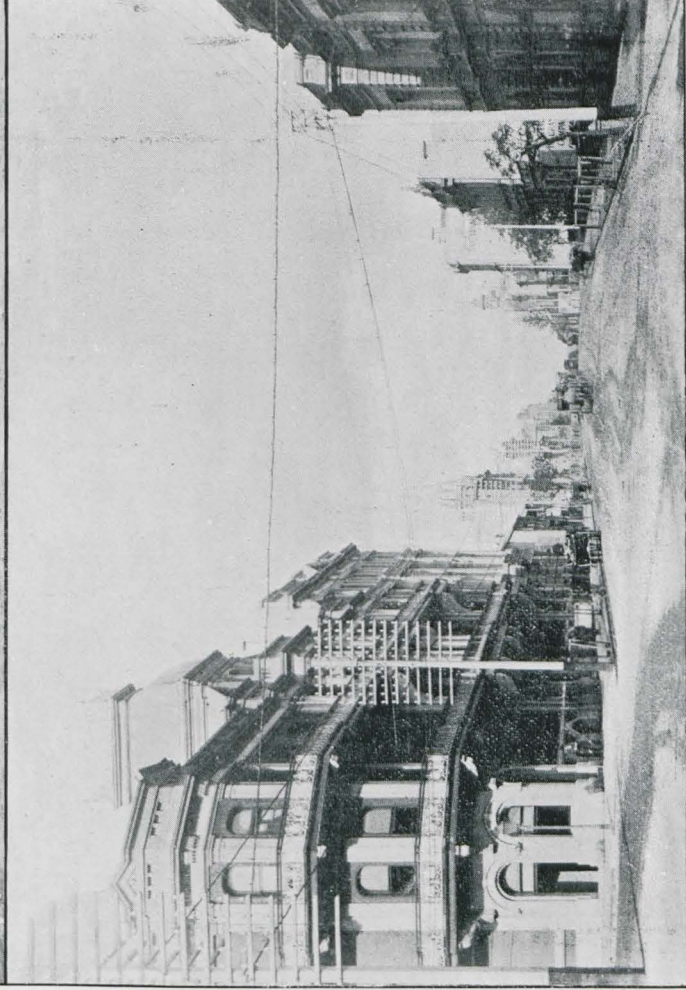


Museum.

Observatory.

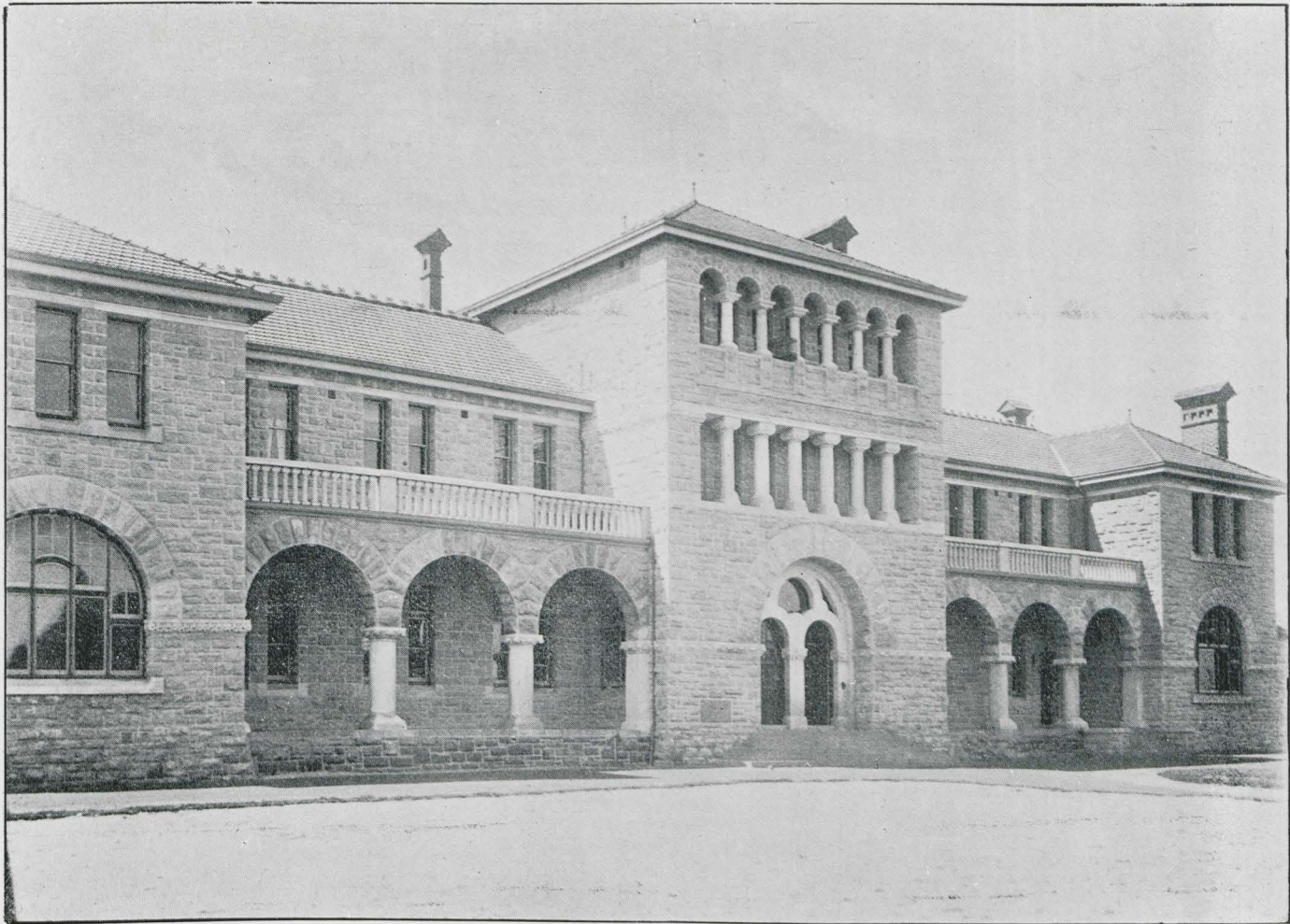


MASONIC HALL, PERTH.



Post Office, St. George's Terrace (Looking West)

St. George's Terrace.

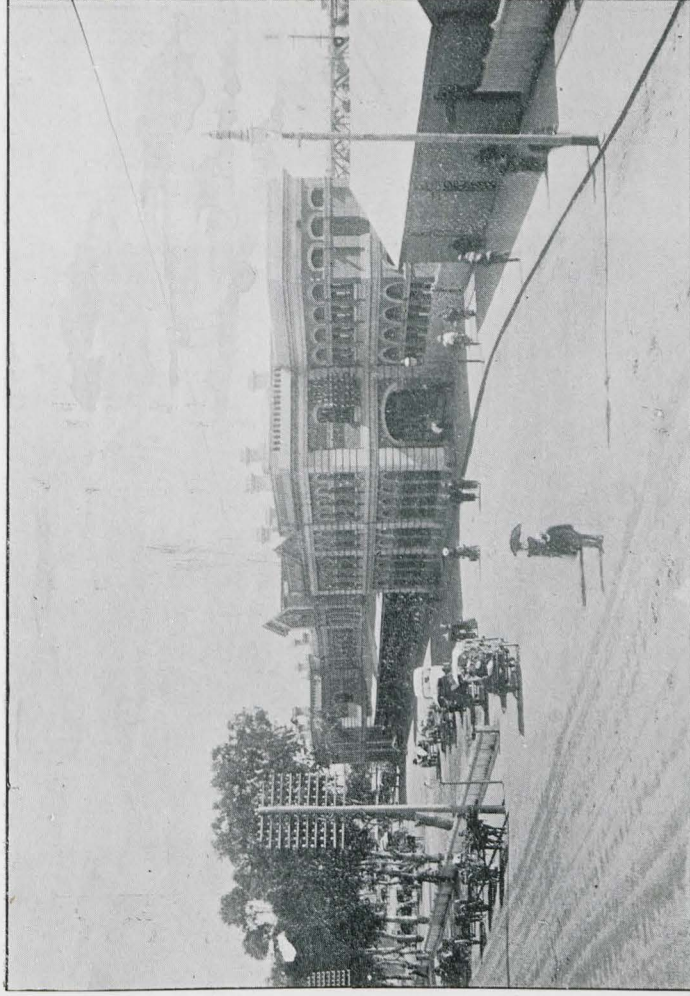


ROYAL MINT, PERTH



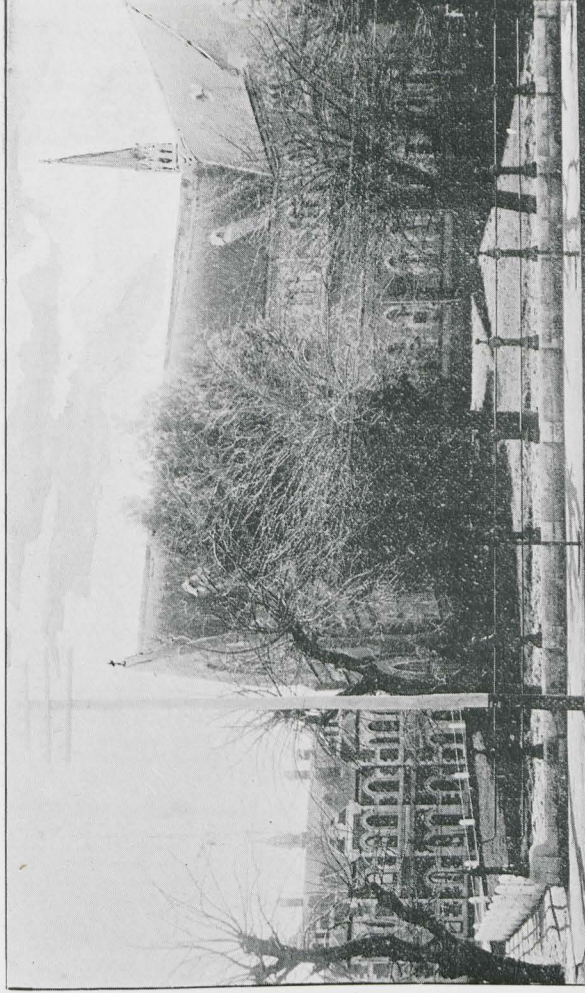
*Mount Eliza
Government Gardens.*

*View of Government Gardens.
Weld Club.*



Railway Station (Front View.)

Railway Station (Interior)



English Church, St. George's Cathedral.

Roman Catholic Cathedral.



FREMANTLE Panorama (from Lighthouse) THE CHIEF PORT. 12 Miles from Perth by Rail. Population about 15,000.



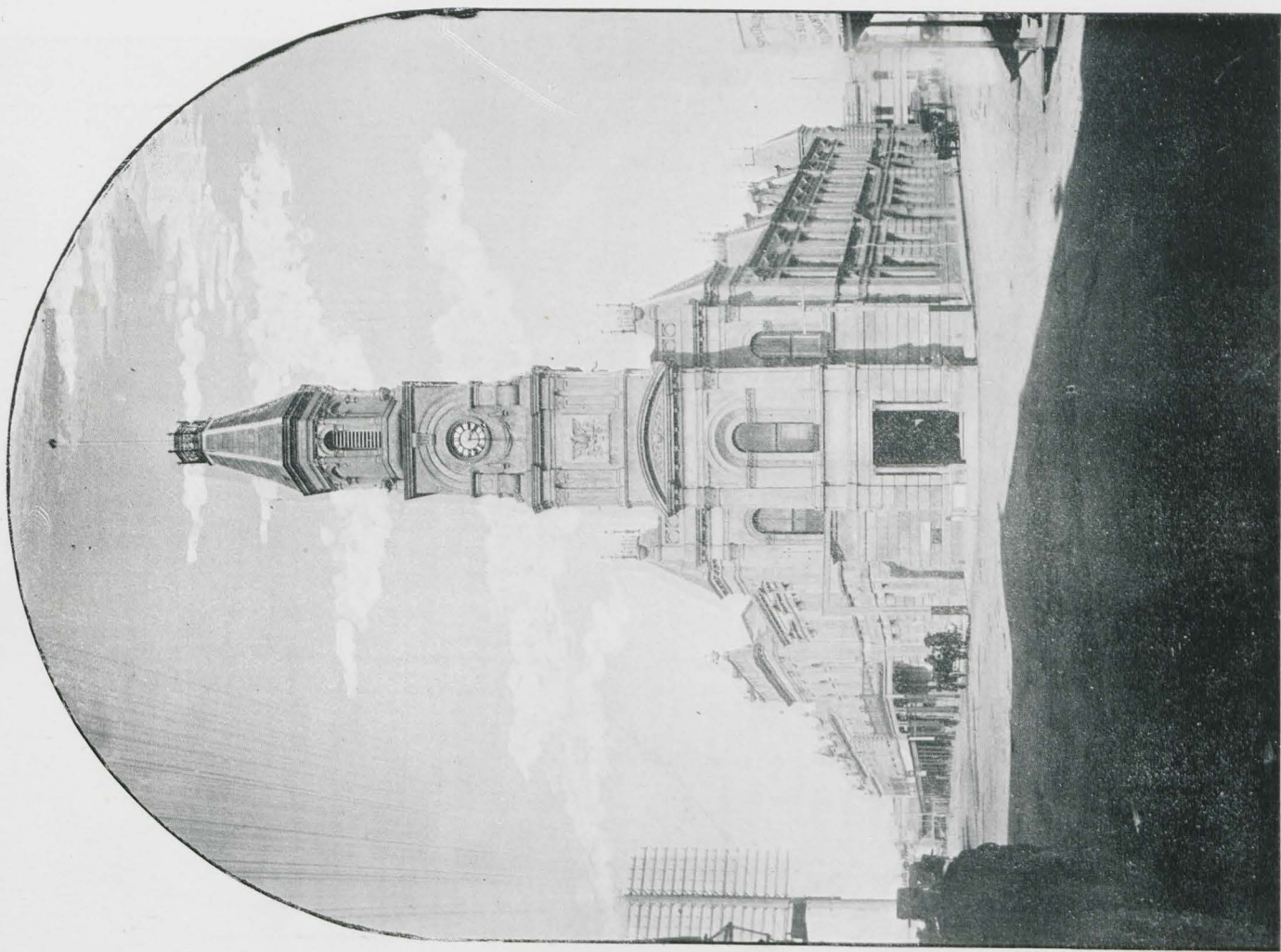
GENERAL VIEW FREMANTLE, from Monument Hill.



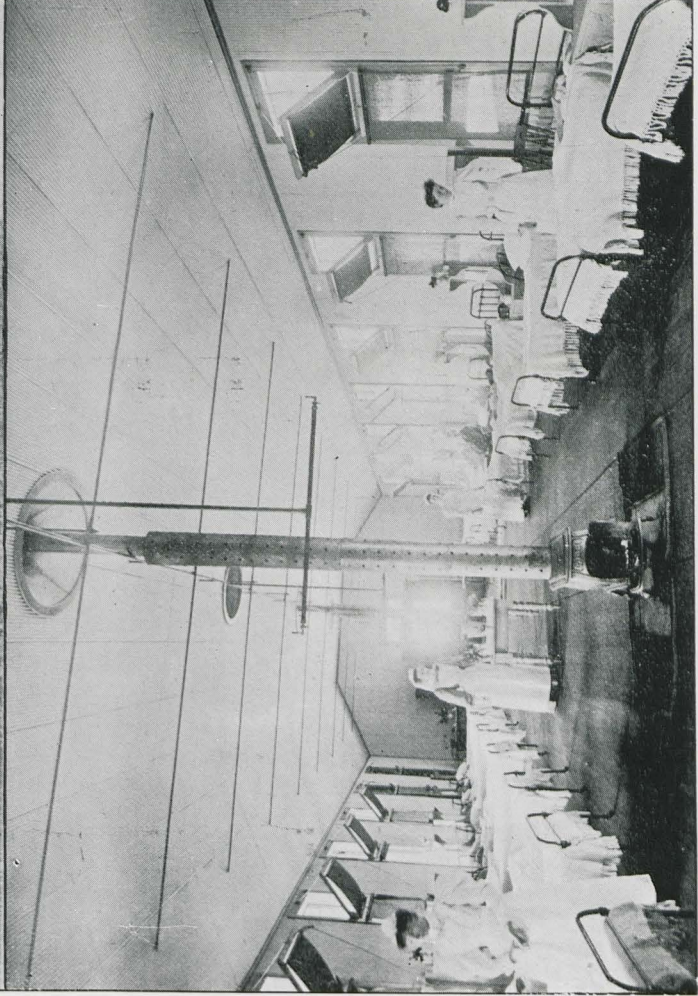
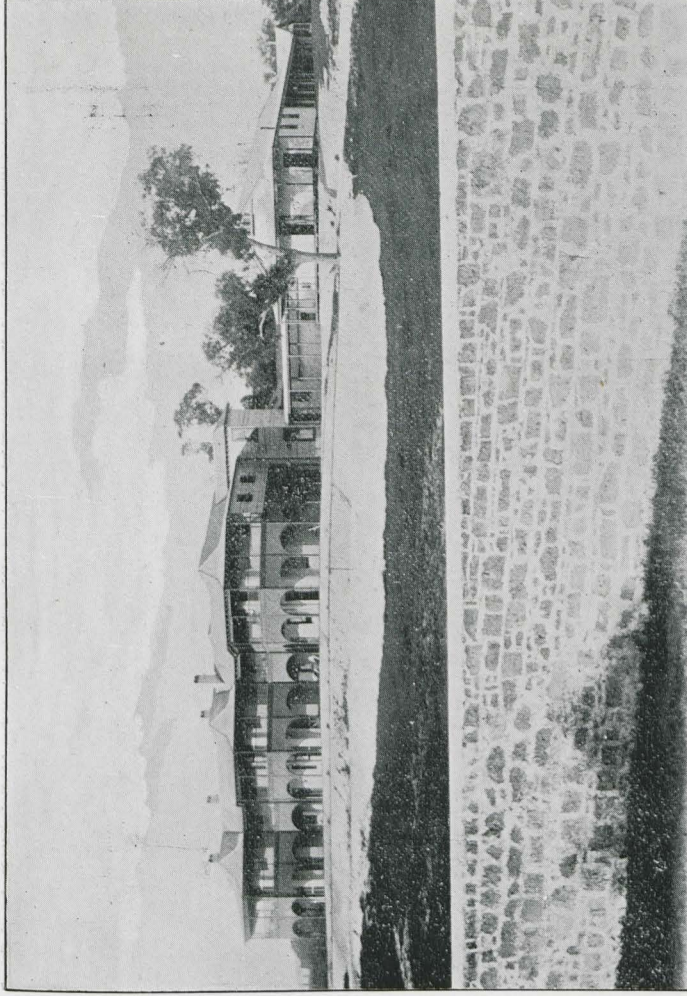
HARBOR, FREMANTLE (German Mail Boats now berth alongside)



*HIGH STREET (Looking East)
Showing Type of Business Premises.*



Town Hall.



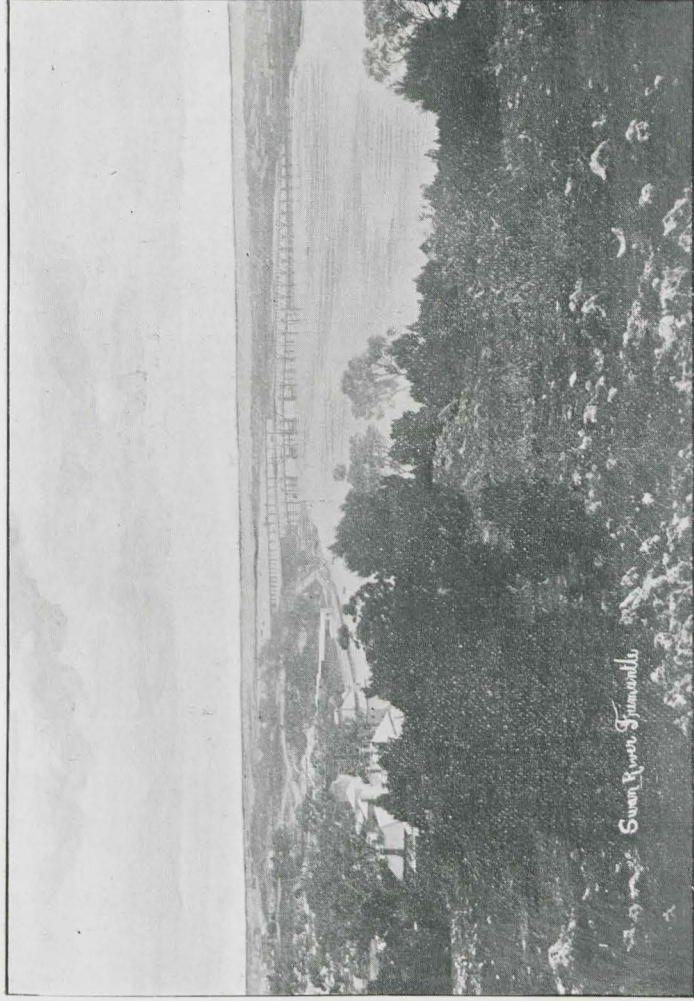
Hospital, Fremantle.

New Fever Ward addition.



North Fremantle

NORTH FREMANTLE and SWAN RIVER.

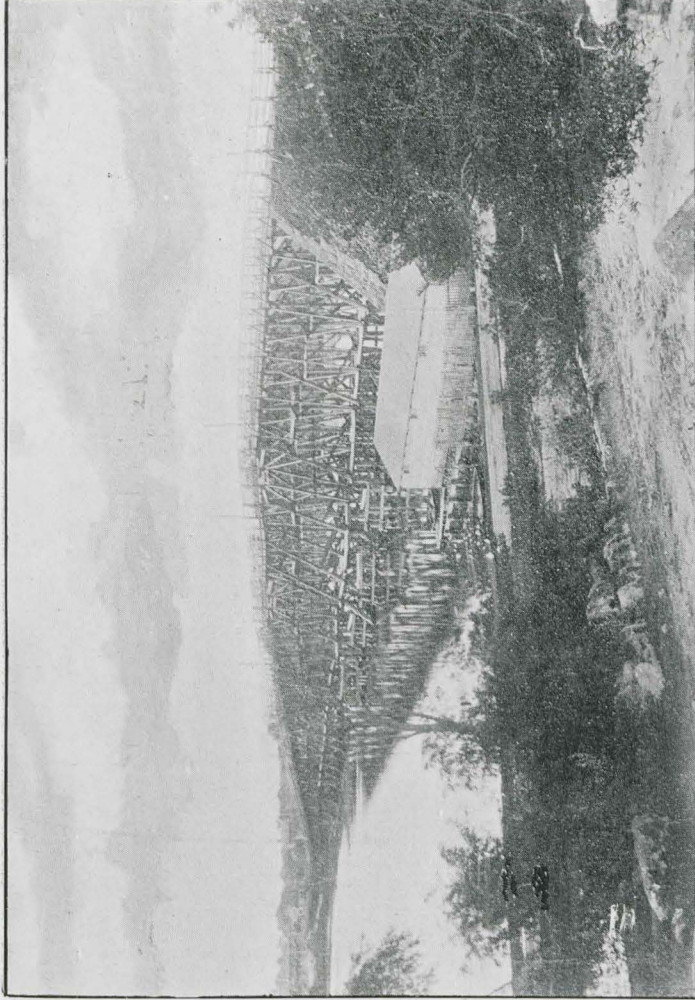


Swan River, Fremantle



River Swan, Fremantle

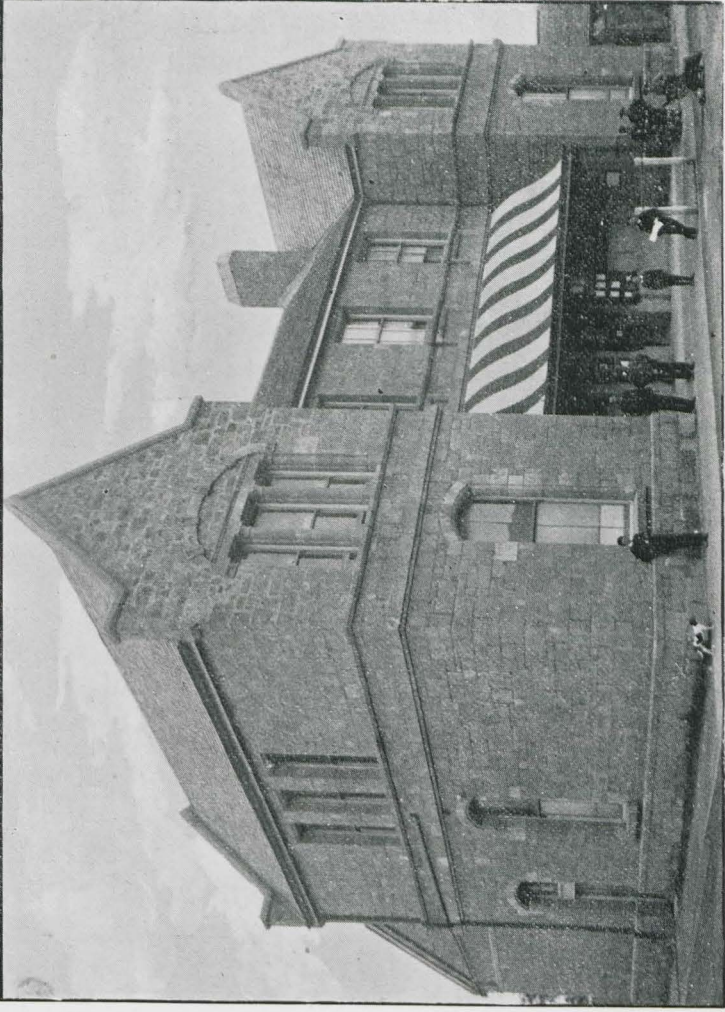
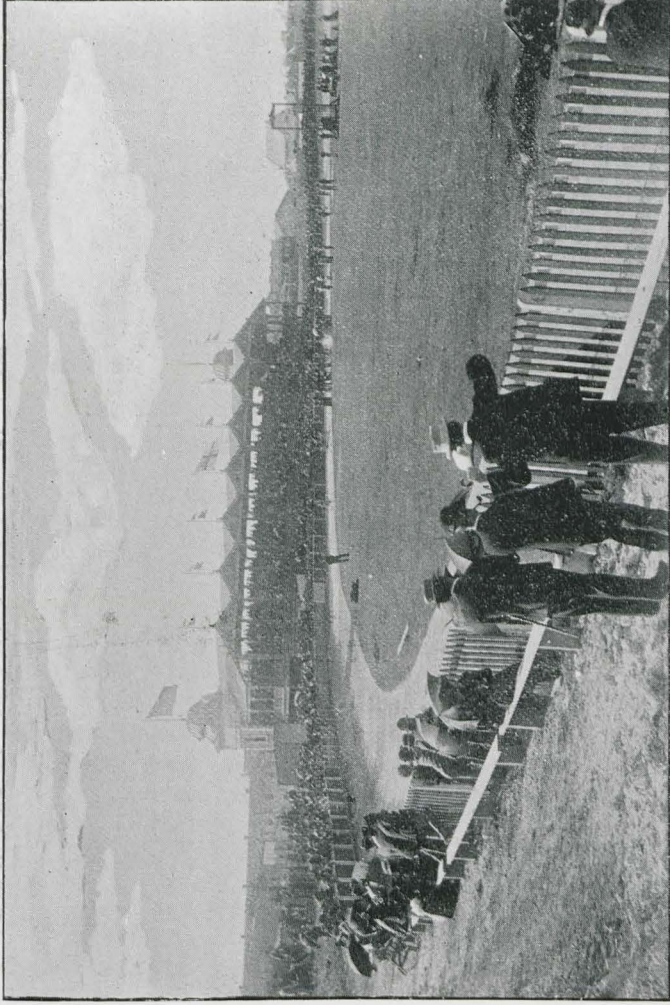
VIEWS OF RIVER SWAN.



*Old Bridge over Swan River (the oldest Bridge in the Colony).
Showing Construction.*

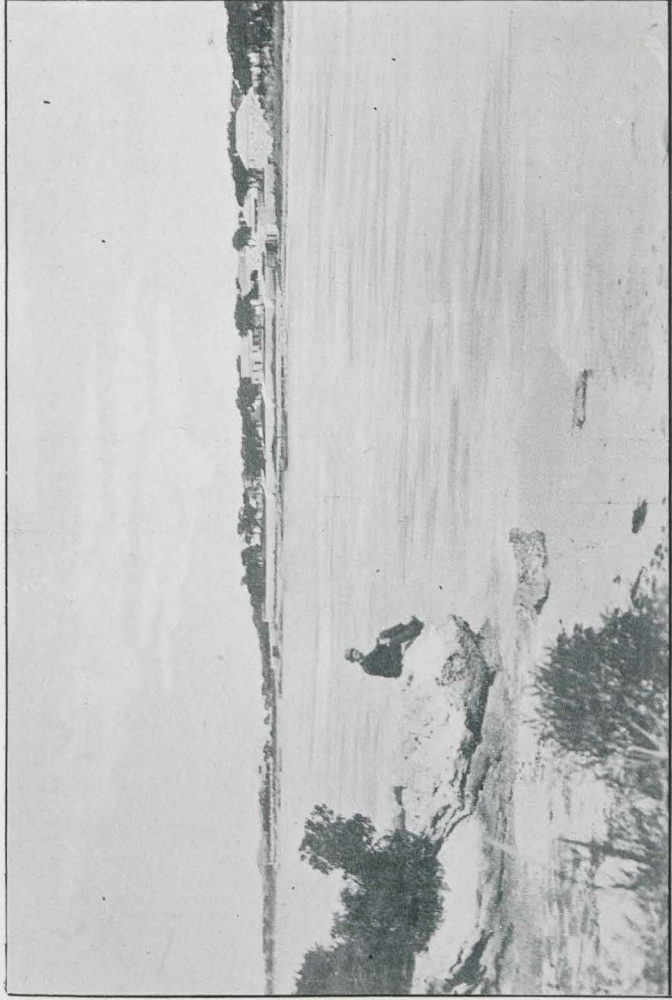


FREMANTLE MARKETS



Fremantle Oval.

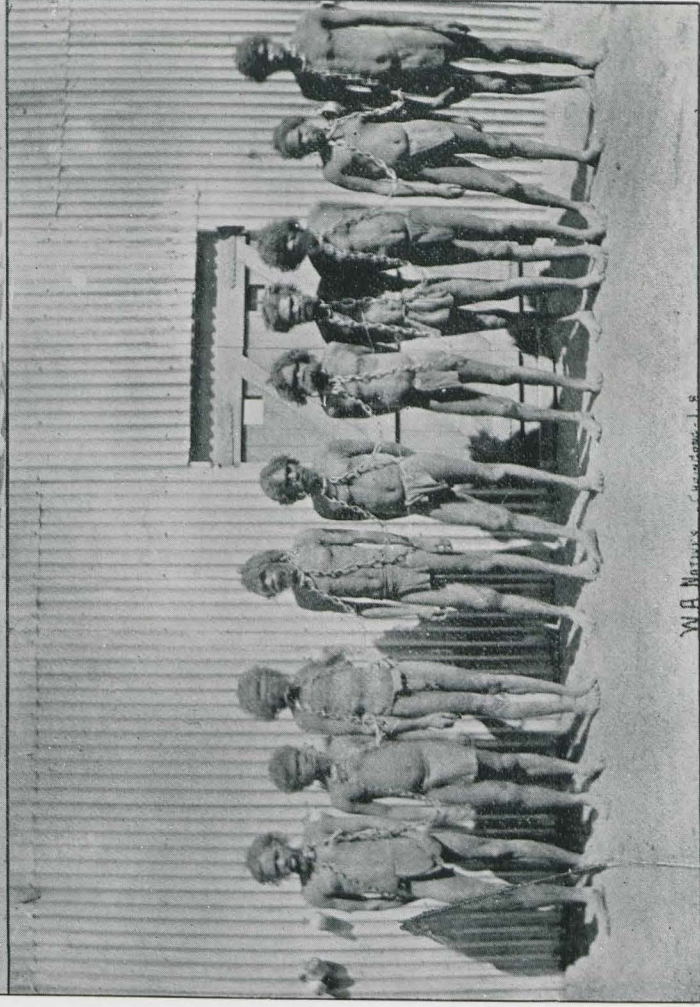
Post Office, Fremantle.



*Rottnest Island Settlement and Native Prison, 10 Miles from Fremantle.
Salt Lakes, Rottnest.*



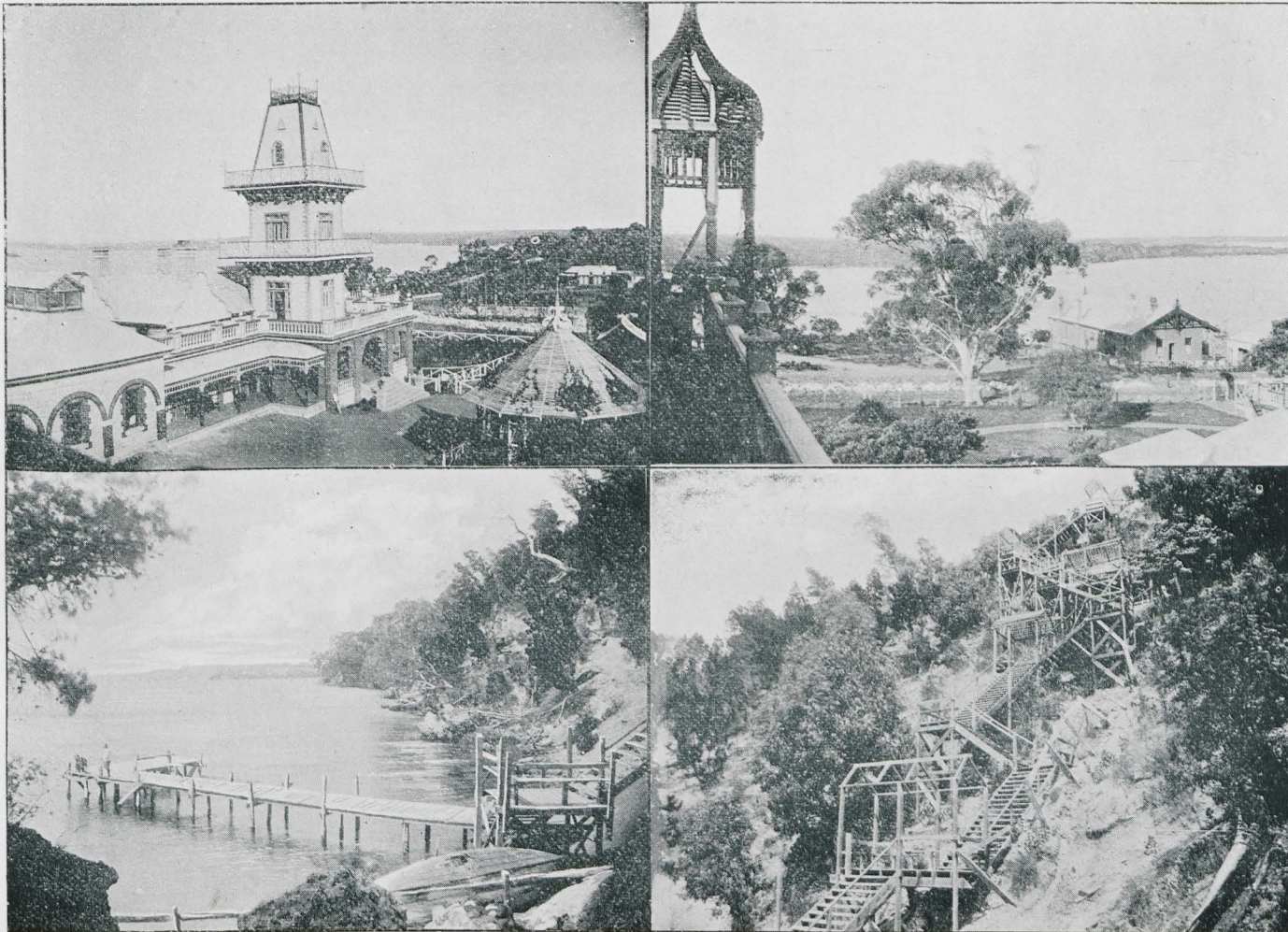
NATIVE PRISONERS ROT-NEST-55 -



W.A. MATTHEWS - CHICAGO, ILL.

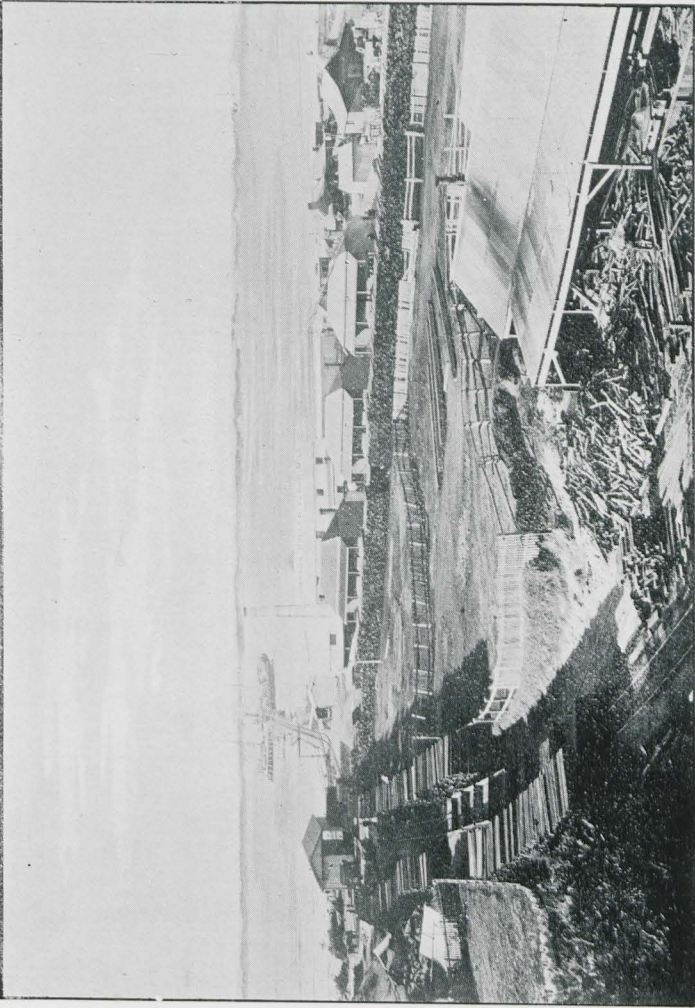
Prisoners.

Chain Gang, North-West Blacks.

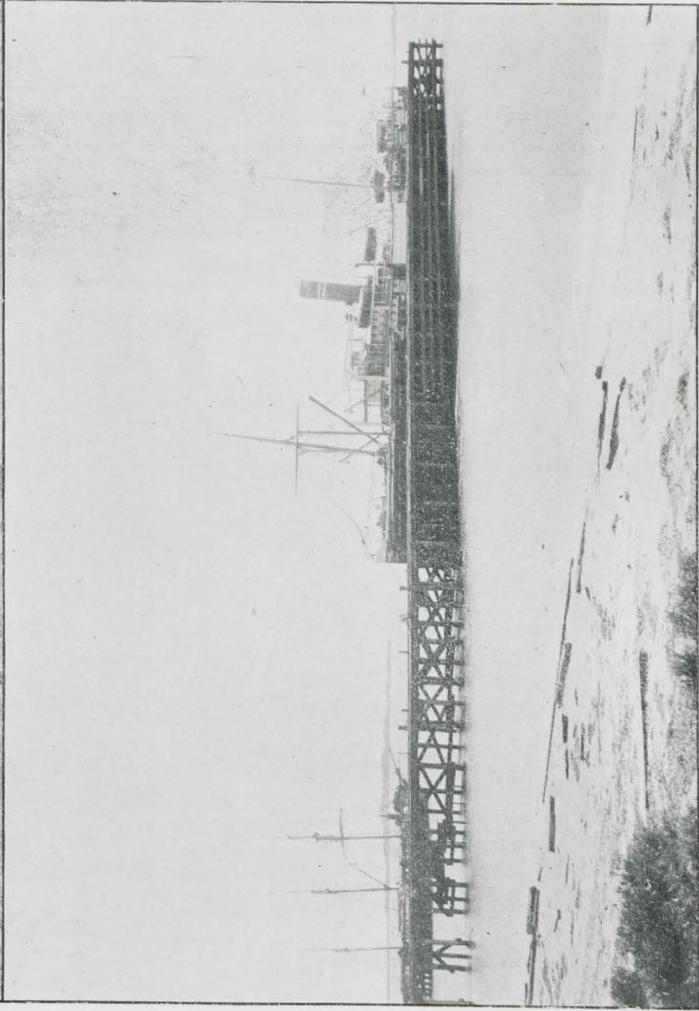
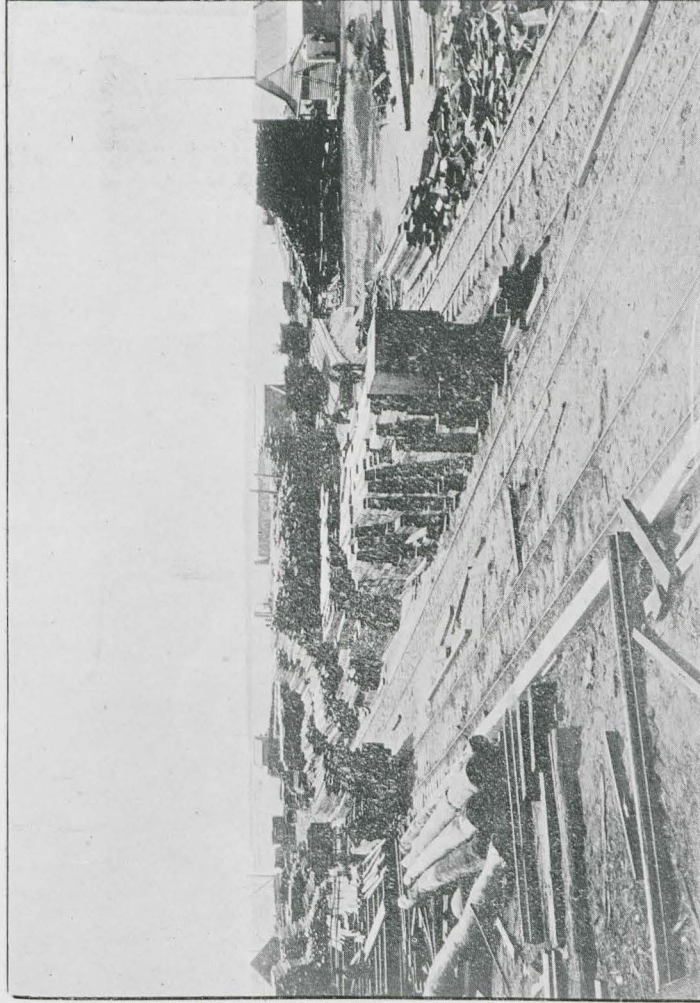


VIEWS OF OSBORNE.

One of the Pleasure Resorts between Perth and Fremantle, overlooking Freshwater Bay.



BUNBURY. A Seaport, 115 Miles by Rail from Perth. Population about 1,100.



Jarrah Timber Ready for Shipment.

Rocky Jetty.



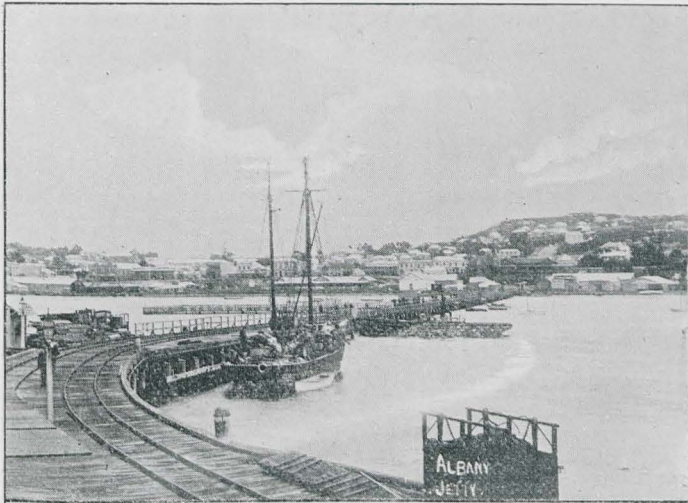
*View of Albany.
Jarrah Mills.*

*Jarrah Logs.
Serpentine Falls.*



Jarrah Forest.

Jarrah Falling.

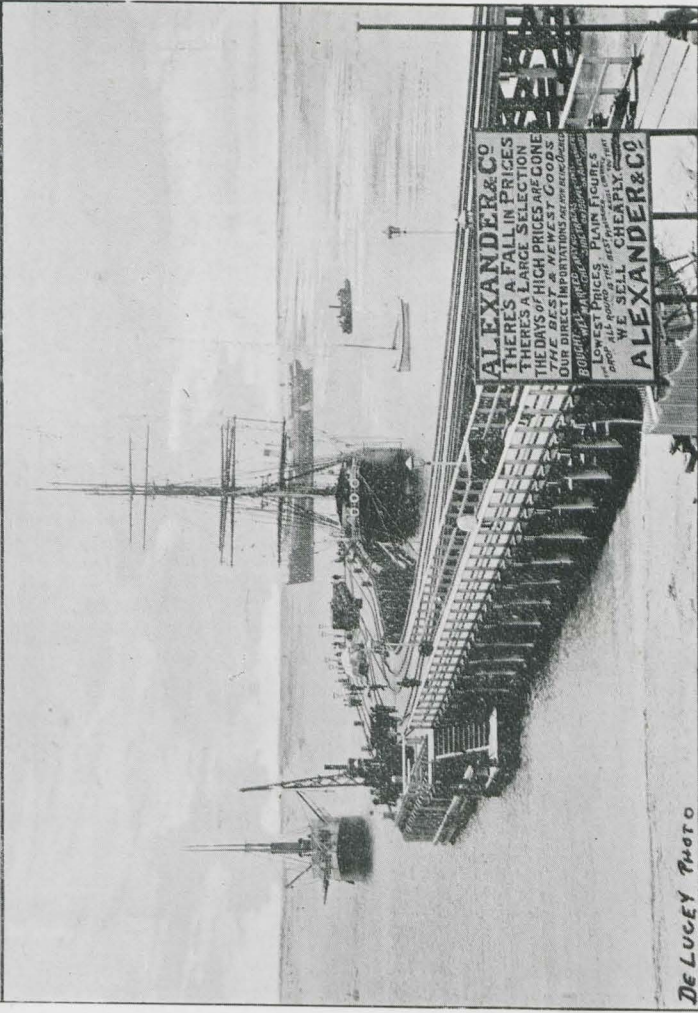
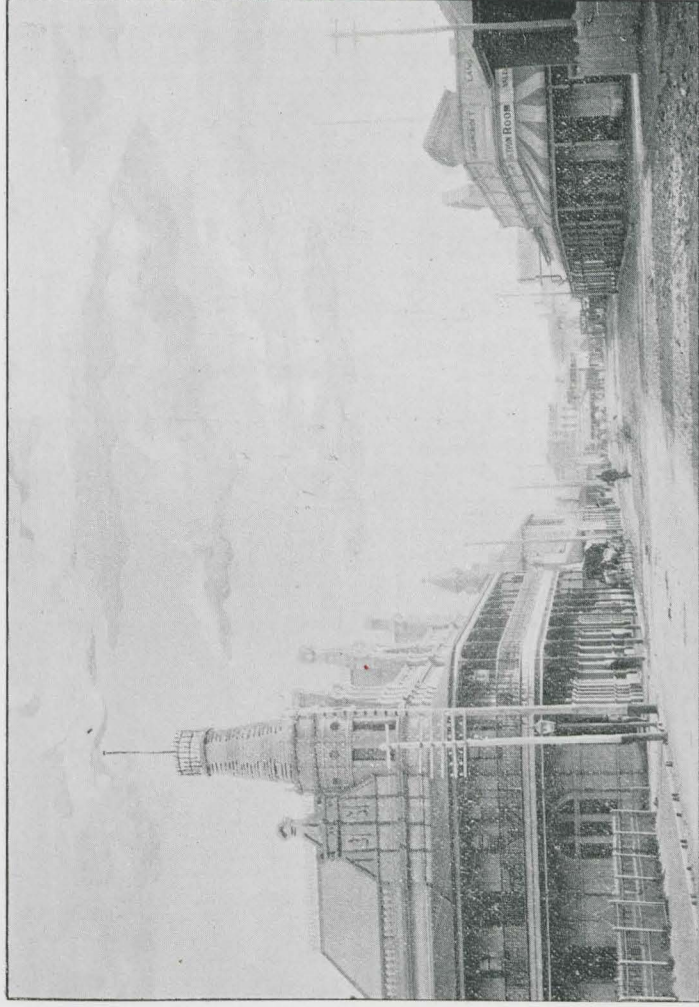


*Albany Jetty.
Point Walter, River Swan.*

*Settler's Cottage
River Swan, Guildford.*



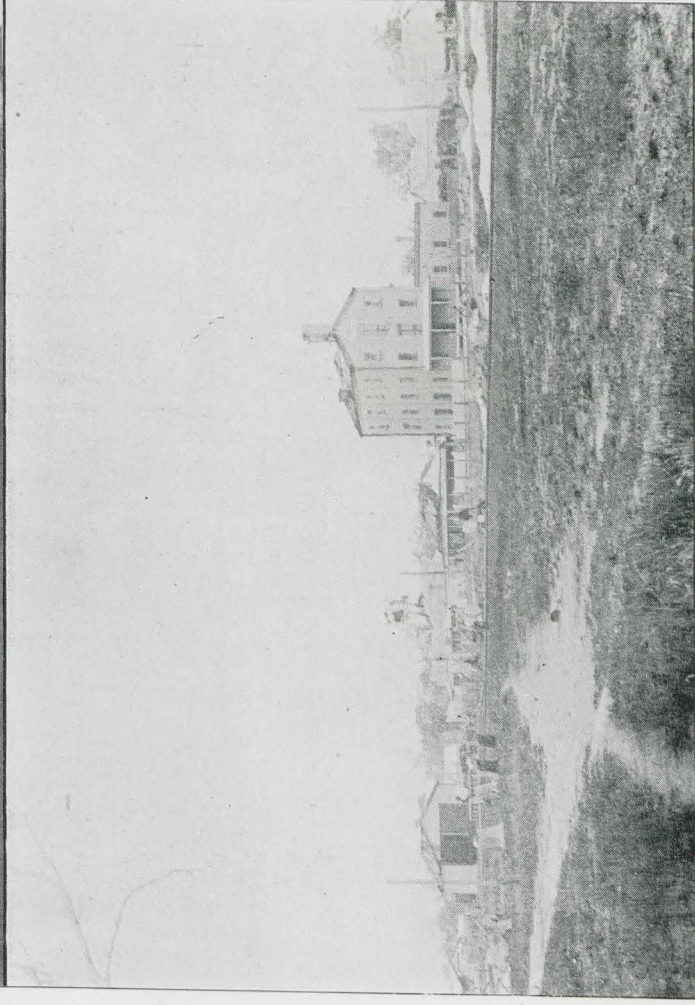
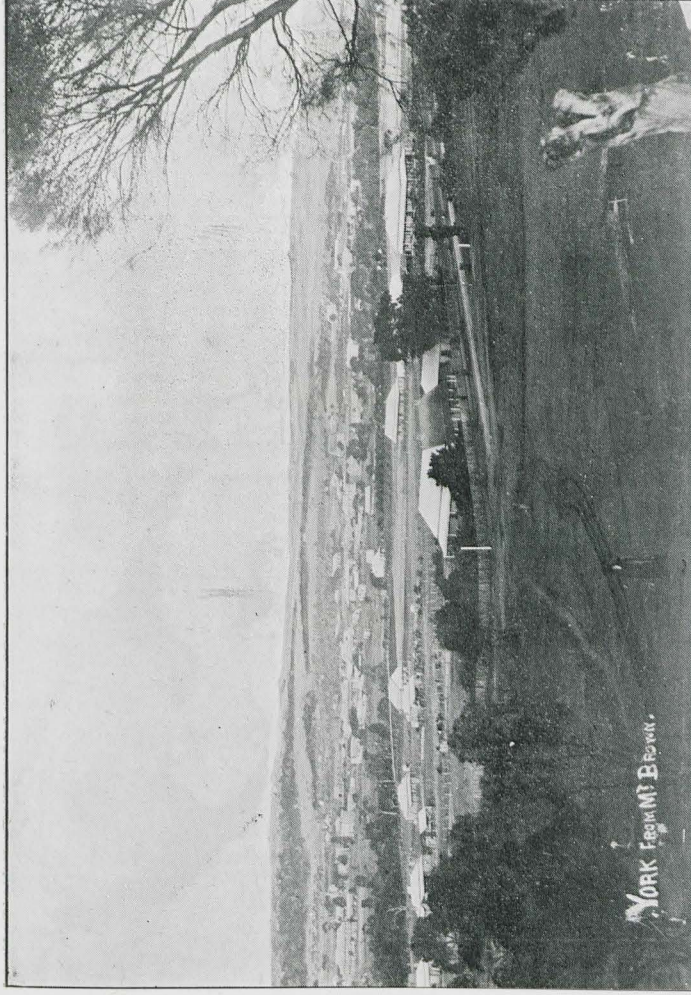
ALBANY, the Port of Call for Mail Steamers. 341 Miles by Rail from Perth. Population about 3,500.



DE LUCEY PHOTO

Marine Terrace, Geraldton.

Geraldton Jetty.

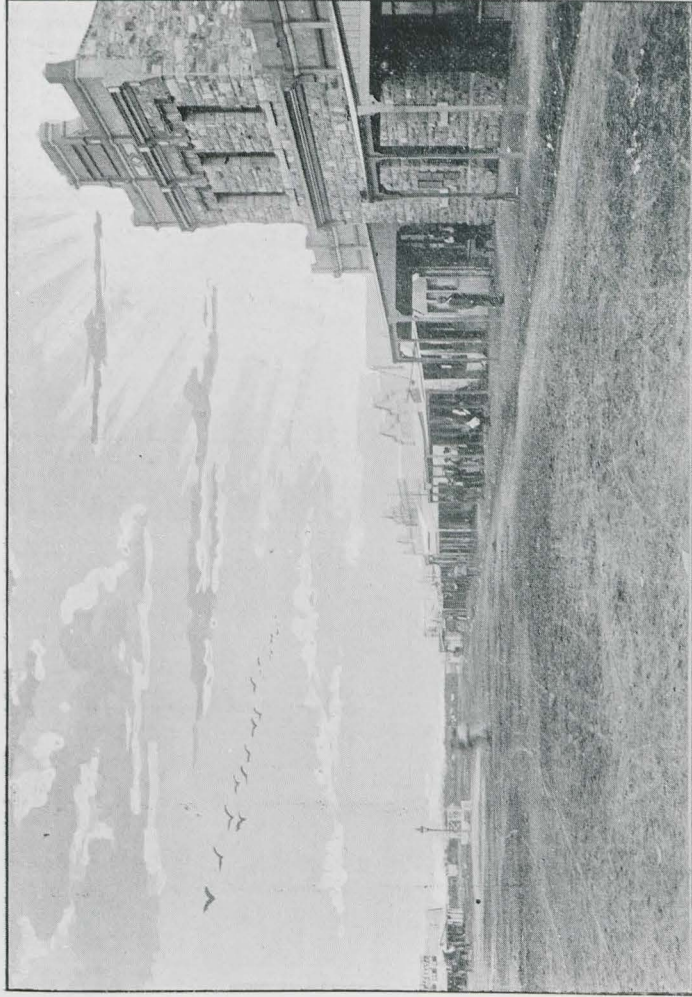


YORK, on the Avon River 60 miles east of Perth by rail. Population 2,000.
KATANNING, Agricultural Town on the Great Southern Railway. Population between 200 and 300.



CUE.

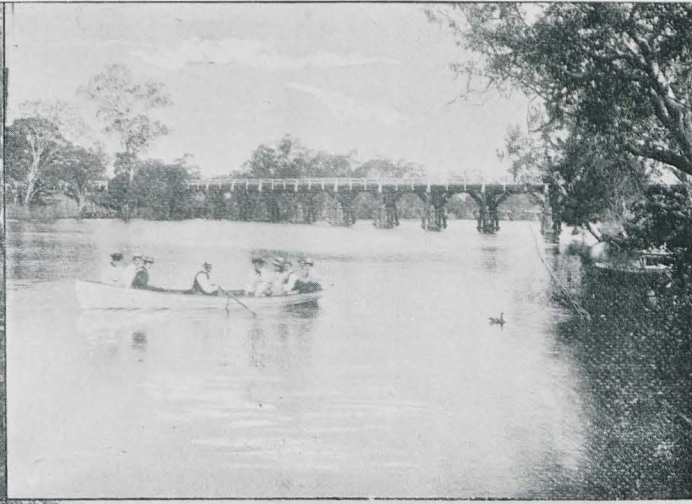
The Centre of the Murchison Goldfields, 260 Miles by Rail from Geraldton. Population 2,000.



GUNNY KHAN & CO. CAMEL TRAIN TO LAKE DARLOT 1919

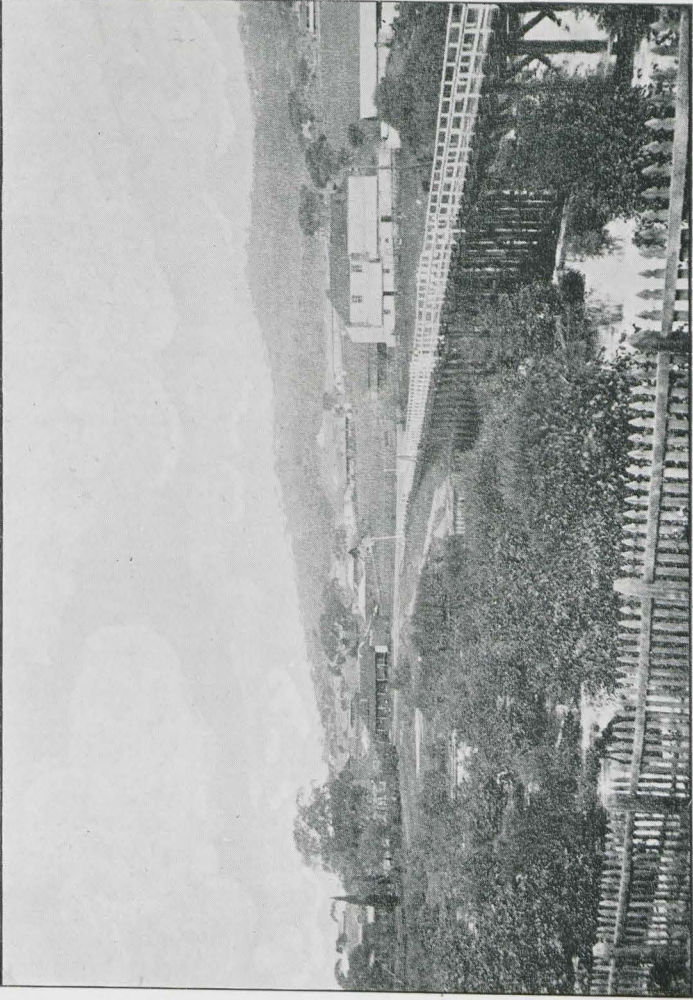
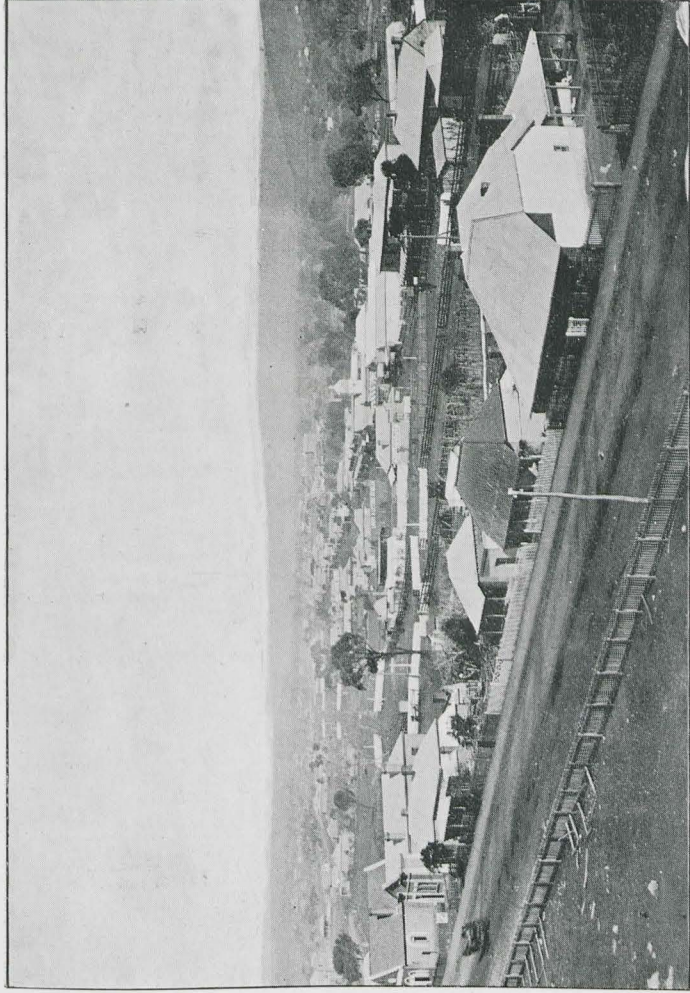
Main Street, Cue.

Camel Train.

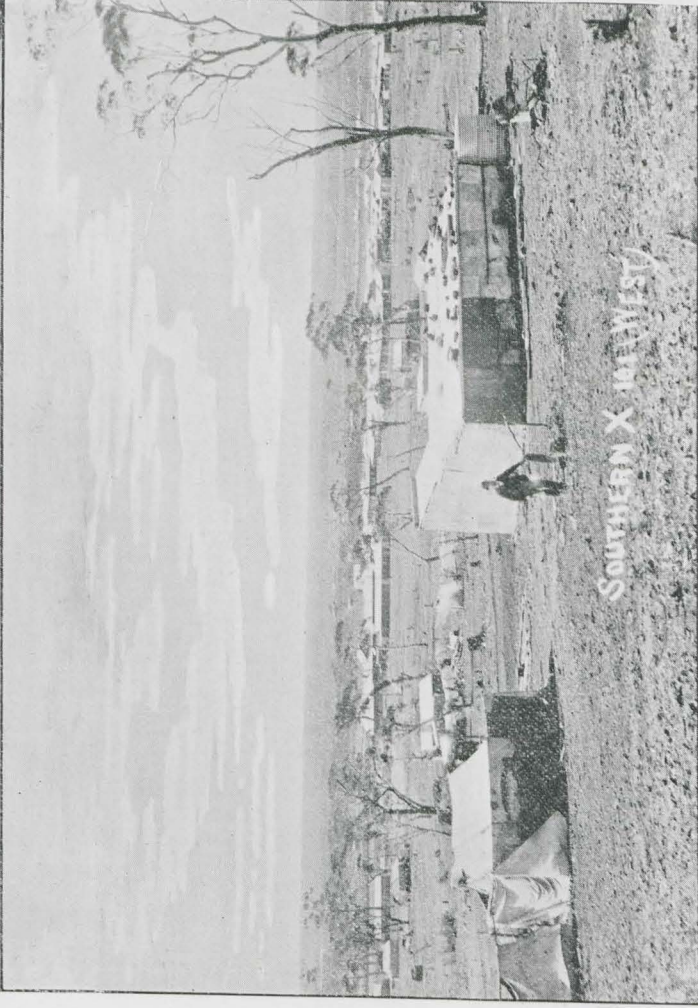
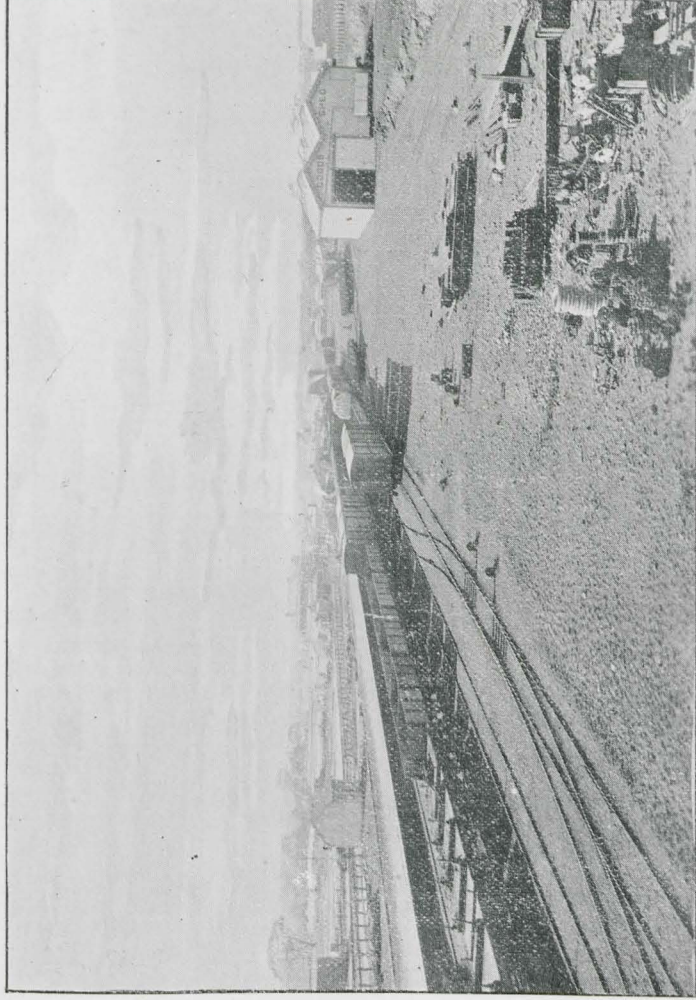


*Avon River.
Eastern Railway.*

*Swan River and Guildford Bridge.
Railway View (Eastern Line).*



*NORTHAM, on the Avon River, 66 Miles from Perth by Rail. Population about 2,000
NEWCASTLE, on the Avon River, 64 Miles from Perth by Rail. Population about 500.*



NORTHAM RAILWAY STATION.

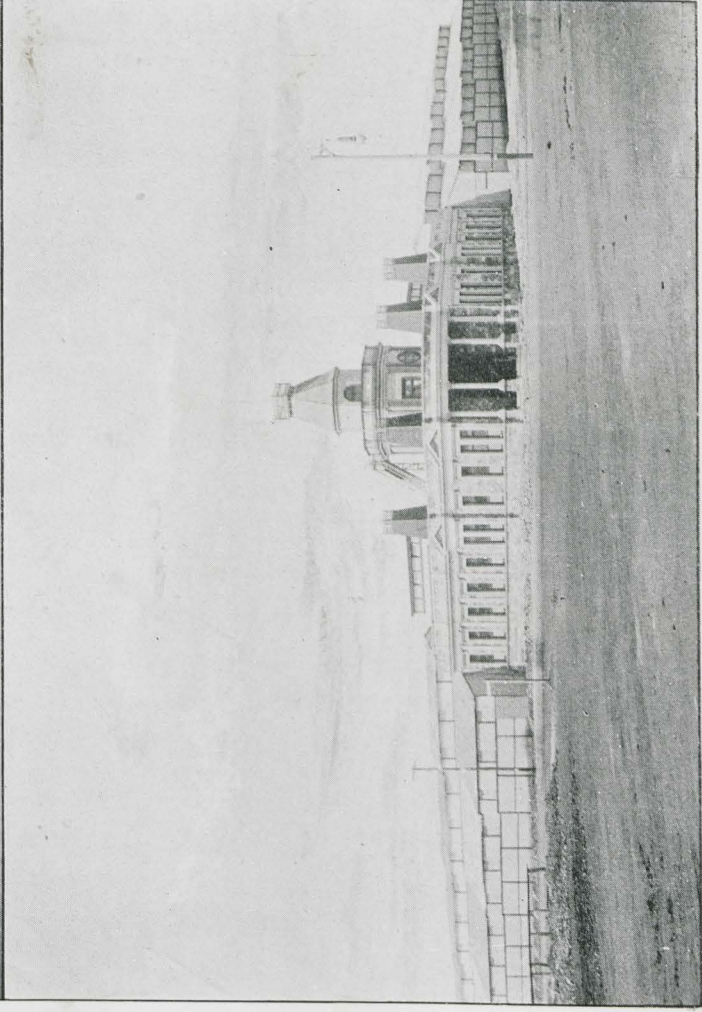
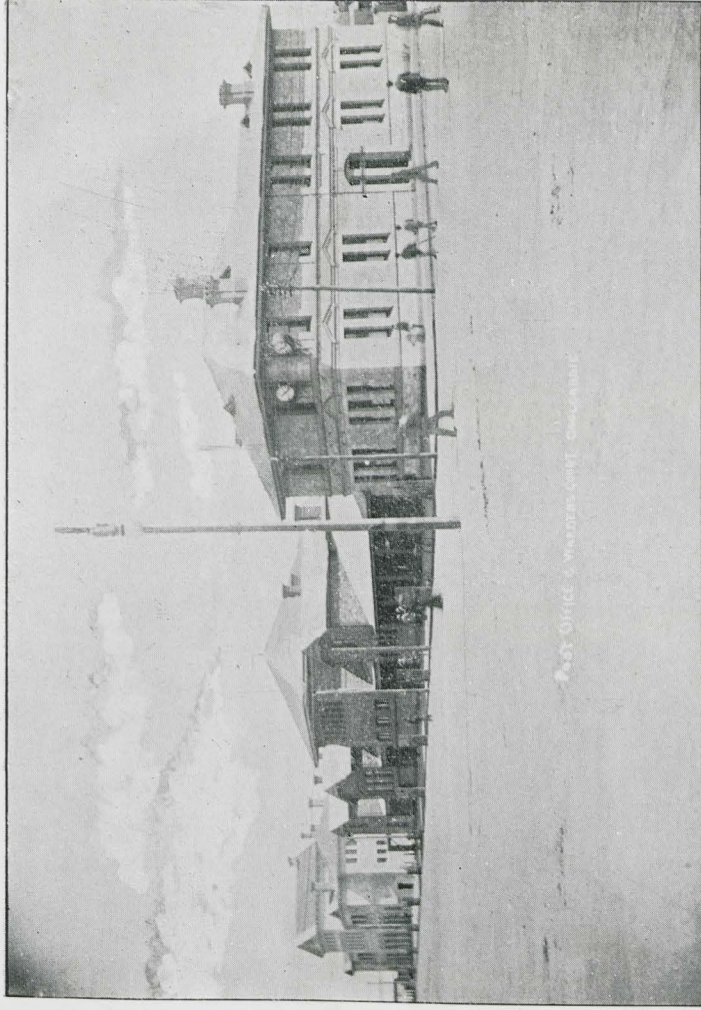
SOUTHERN CROSS, the Chief Town of the Yilgarn Goldfields, 236 miles by rail from Perth. Population about 1,200.



COOLGARDIE Panorama, THE HEADQUARTERS OF THE COOLGARDIE GOLDFIELDS. 378 Miles by Rail from Perth. Population between 18,000 and 20,000



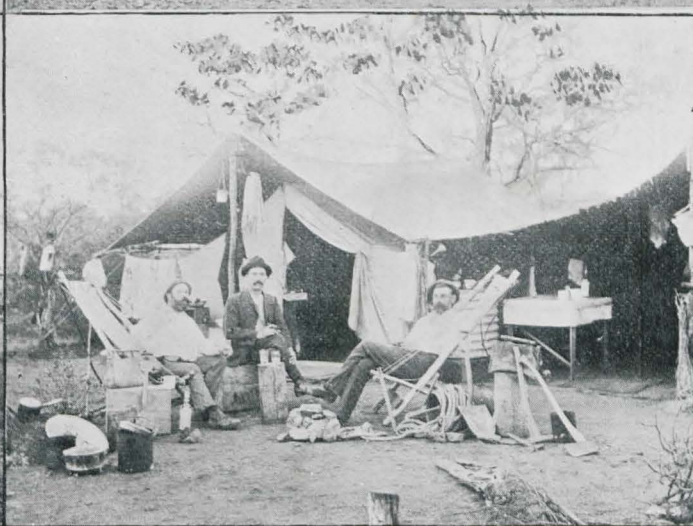
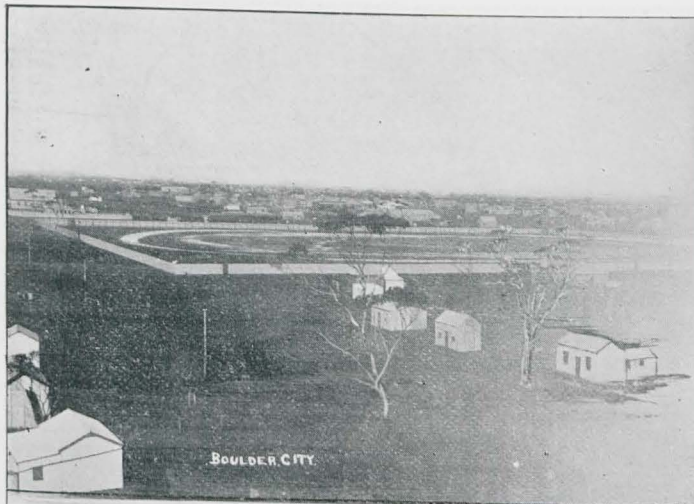
COOLGARDIE in 1891.



*Post Office and Warden's Court, Bayley St., Coolgardie.
Exhibition Building, Coolgardie.*

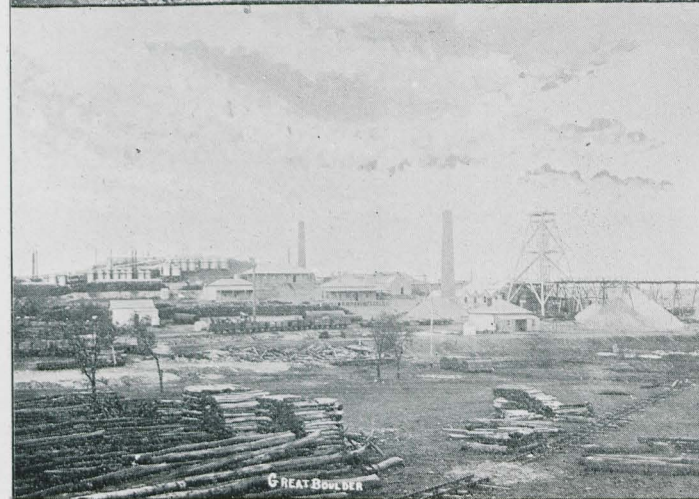
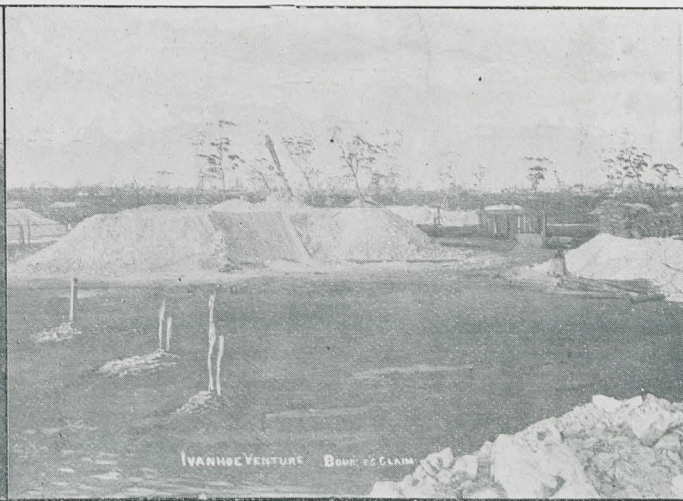


KALGOORLIE Panorama, The Chief Mining Town of the Coolgardie Goldfields. 402 Miles by Rail from Perth Population about 12,000.



*Boulder City
Condenser.*

*Old Kalgoorlie Post Office.
Camp Life.*



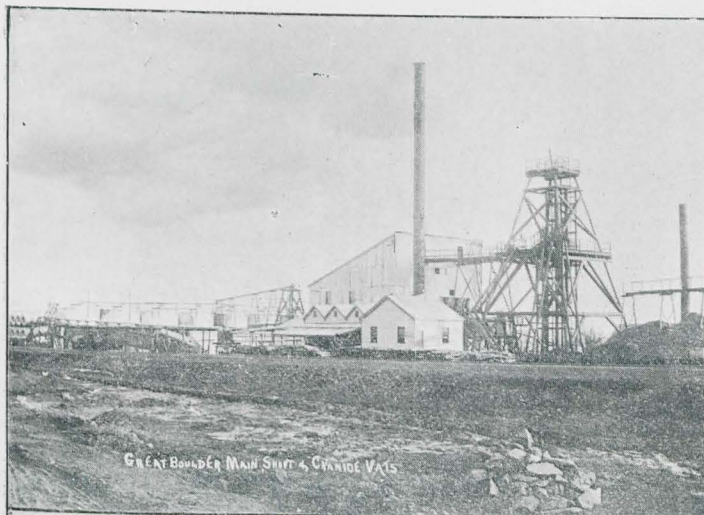
*Brown Hill.
Great Boulder.*

*Ivanhoe Venture.
Lake View.*



LAKE VIEW

GREAT BOULDER and LAKE VIEW Panorama.



Great Boulder Main Shaft & Change Vats



Australian United



Ivanhoe



Lady Shenton, Menzies

Great Boulder.
Ivanhoe.

Australian United.
Lady Shenton, Menzies.



Dry Blowing.

Cement Claim.



MENZIES (General View)

A Mining Centre on the Coolgardie Goldfields. 90 Miles by Rail from Kalgoorlie.



*Main Street, Menzies.
Main Street, Kanowna.*

*Main Street, Kalgoorlie (West).
Main Street, Kalgoorlie (East).*



Coolgardie Blacks.

W.A. Natives in War Paint (Geraldton).



MARKET STREET, FREMANTLE.

